



PROMOTING ECONOMIC ACCELERATOR PROJECTS (EAP) along the East Coast Rail Link (ECRL)

Seminar on East Coast Rail Link –
Economic Accelerator Project (ECRL –
EAP) Business and Investment
Opportunities

8 March 2024 | Friday | Perdana Hall

01 ECONOMIC ACCELERATOR PROJECTS (EAP)

PROJECT BACKGROUND

EAST COAST RAIL LINK – ECONOMIC ACCELERATOR PROJECT (EAP)

Brief Overview

25TH APRIL 2019, BEIJING, PEOPLE'S REPUBLIC OF CHINA

MIDA and China Communications Construction Company Ltd. (CCCC) signed an MOU to co-operate for the development of the EAP projects along the ECRL Corridor.

- ❖ Invest in EAP;
- ❖ Promote the EAP to maximize its potential success; and
- ❖ Invite local and international investors to also invest in EAP.



TOTAL IMPACT (GDP)

Construction & Operation Phase (2020 – 2047)



MALAYSIA

RM1.4 trillion
(2047)

RM1.34 trillion
(2020)

0.14% / years
3.78% / 27 years
(+ RM52.8 billion)

1,390,086
Job
Opportunities
(2047)



TOURISM SECTOR DEVELOPMENT AFTER ECRL OPERATION

Percent Increase in Domestic Visitors After the ECRL in the first year of operation (2027), %

Estimated Percent Increase in Domestic and INTERNATIONAL TOURIST Visitors After the ECRL in the East Coast Region and Selangor State

5%

DELVING INTO NIMP 2030 – MISSION 4

Goals/Targets



Increase Economic Complexity



Create High-Value Job Opportunities



Extend Domestic Linkages



Develop New & Existing Clusters



Improve Inclusivity



Enhance ESG Practices

Missions

MISSION 1
Advance economic complexity

MISSION 2
Tech up for a digitally vibrant nation

MISSION 3
Push for Net Zero

MISSION 4
Safeguard economic security & inclusivity

Enablers

- Mobilise financing ecosystem
- Foster talent development and attraction
- Establish best-in-class investor journey for ease of doing business
- Introduce whole-of-nation governance framework

Macro-economic Targets

Value-added (GDP)

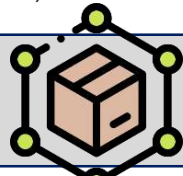
364.1 (2022)
587.5 (CAGR 6.5%)

Employment

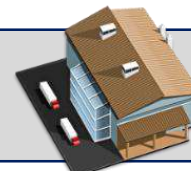
2.7 (2022)
3.3 (CAGR 2.3%)

Median salary

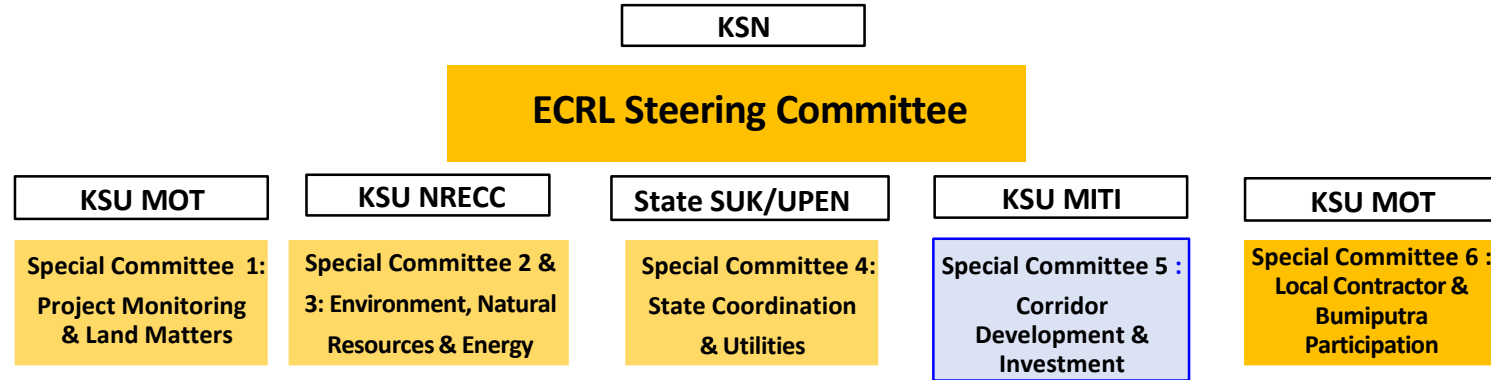
1,976 (2021)
4,510 (CAGR 9.6%)



Supply Chain Integration
SME Development



SPECIAL COMMITTEE 5: INVESTMENT & CORRIDOR DEVELOPMENT



ROLES OF SPECIAL COMMITTEE 5

-  Establish the master plan of the EAP along the ECRL corridor.
-  Facilitate the EAP development process.
-  Monitor EAP implementation.
-  Escalate unresolved issues and recommendation to the ECRL Steering Committee.

COMMITTEE MEMBERS

1. MITI
2. MIDA
3. UPEN
4. MOT
5. ECERDC
6. MRL
7. KPKT
8. KSM
9. JKPTG
10. PLANMalaysia

ENGAGEMENTS TO IDENTIFY AND PROMOTE EAP

Total 439 Engagements




*ECRL Unit, MIDA was formed on 9 May 2019.

*Photos are non exhaustive.

KEY EAP LOCATIONS IDENTIFIED



17 Industrial Parks



15 TOD



11 Logistic Hub/COD



Kelantan

- Tok Bali Industrial Park

- Kota Bharu Sentral (KB Sentral)

- Tok Bali Inland Port



Terengganu

- Kertih Biopolymer Park
- Kertih Terengganu Industrial Park (KTIP)
- Santong & Batu 7 Industrial Park
- Kemaman Heavy Industrial Park
- Terengganu Silica Valley

- Jertih
- Kuala Terengganu
- Dungun
- Chukai

- Kemaman Port
- Terengganu Silica Valley



Pahang

- Pahang Technology Park
- Gambang Halal Park
- Malaysia-China Kuantan Industrial Park (MCKIP)
- Gebeng Industrial Park
- Bentong Industrial Park

- Cherating
- KotaSAS
- Paya Besar
- Temerloh Smart City
- Bentong

- Cherating International Airport
- Kuantan Port City
- Malaysia-China Kuantan International Logistic Park (MCKILP) @MCKIP3
- Temerloh Inland Port
- Bentong



Selangor

- Serendah UMW Park
- Novva Integrated Park
- Puncak Alam
- Kapar
- Klang
- Pulau Indah

- ITT Gombak
- Serendah
- Puncak Alam
- Kapar
- Klang

- Serendah Cargo Hub
- Kapar
- Port Klang

FURTHER INVESTMENT OPPORTUNITIES IN EAPS – THE ENABLERS

Construction & Its
Related Services



Green Energy
Related Services

ICT (Inc. Solution
Providers For
Industry 4.0)



Research &
Development

Specialised
Technical Support
(Inc. Robotics &
Automation)



Environmental
Management &
Consultancy



Education &
Industrial Training

Engineering
Consultancy



Integrated
Engineering
Services
(Turnkey/EPCC)



Oil & Gas

**Infrastructure/Facility Readiness is Important to
make ECRL-EAP attractive to potential investors**

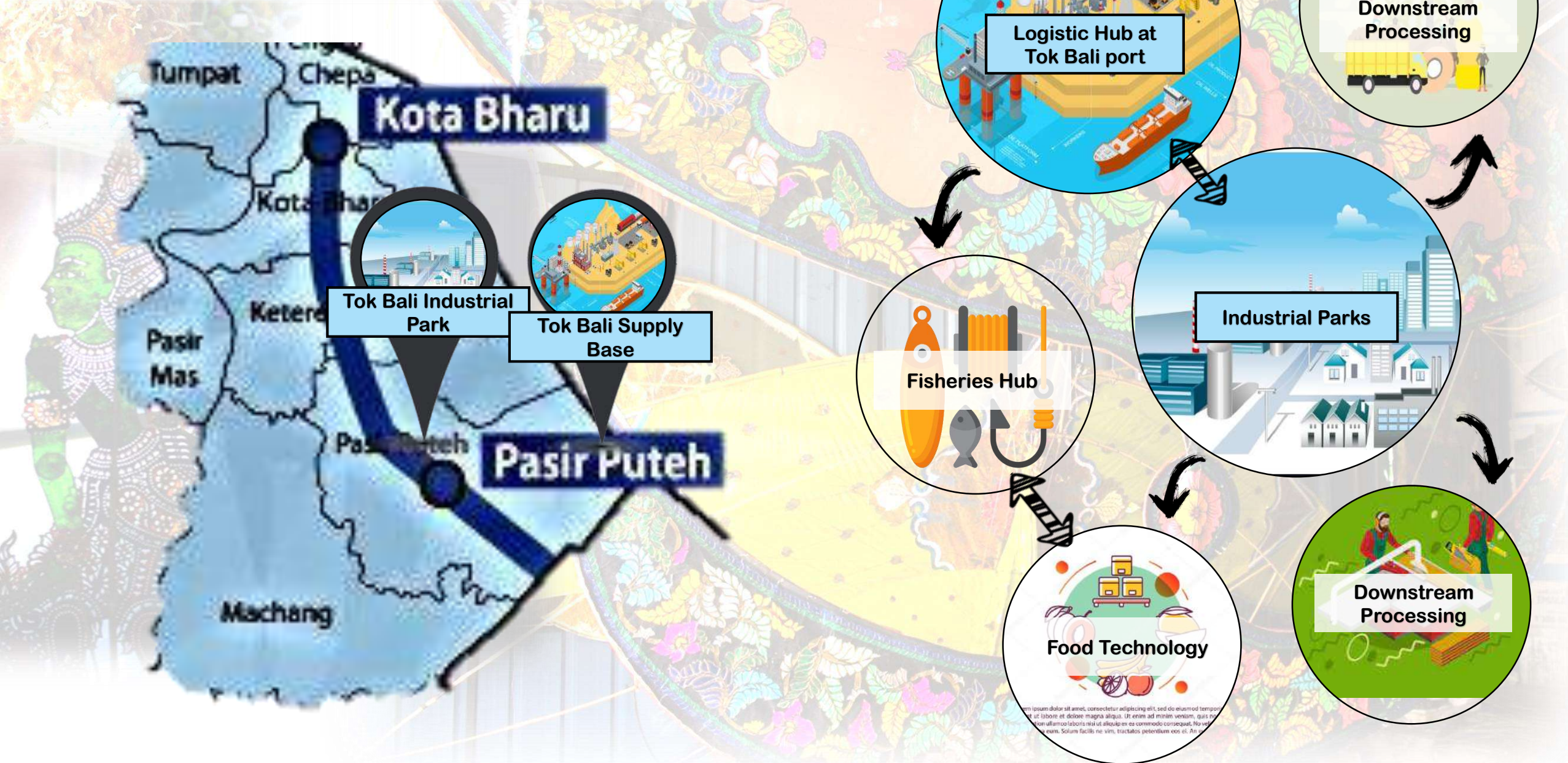
- ✓ **Enhancing efficiency and connectivity**
- ✓ **Empowering local companies**

AND MANY MORE....

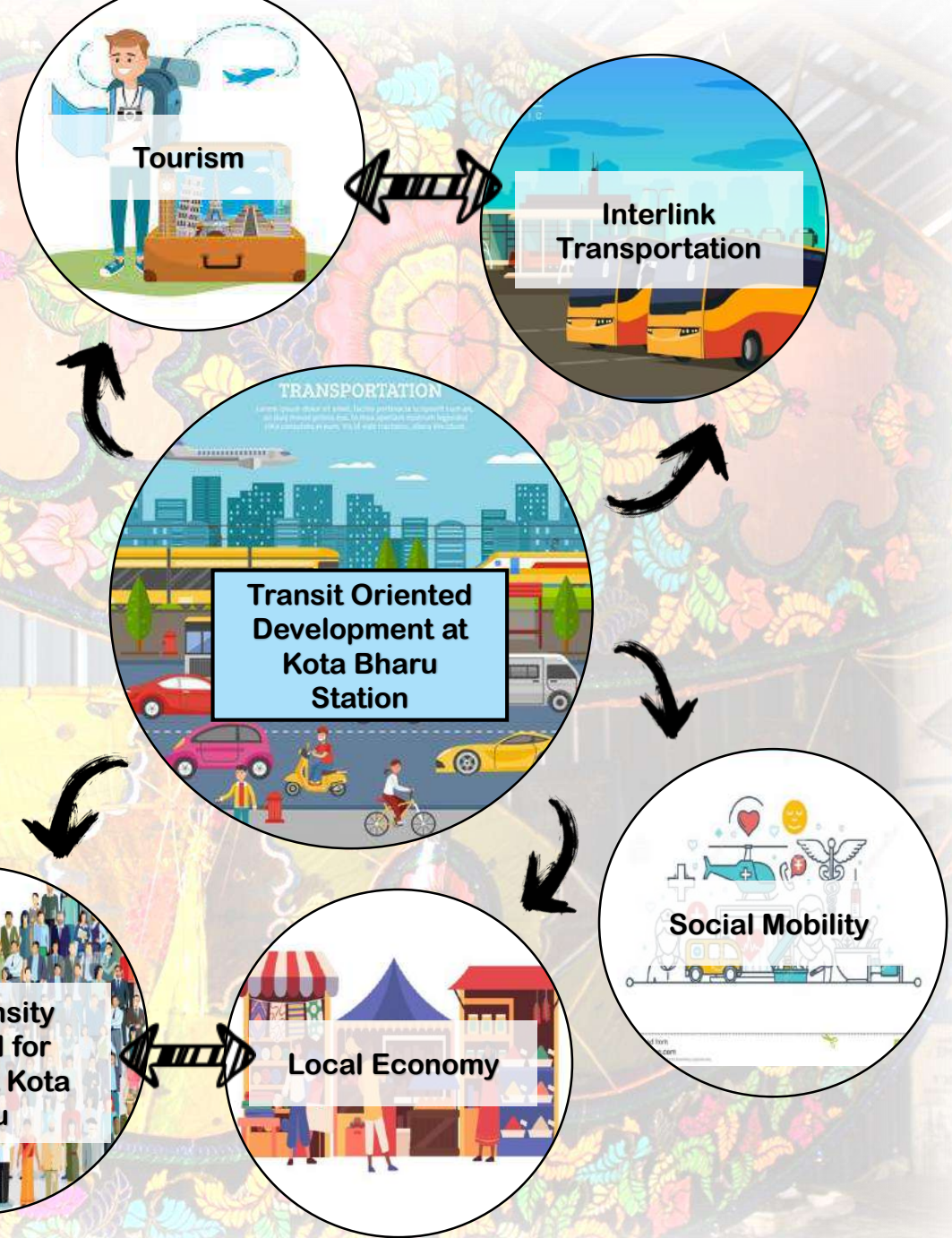
02 ECONOMIC ACCELERATOR PROJECTS (EAP)

POTENTIAL EAP PROJECT

KELANTAN EAP INDUSTRIAL ECOSYSTEM



KELANTAN TOD ECOSYSTEM

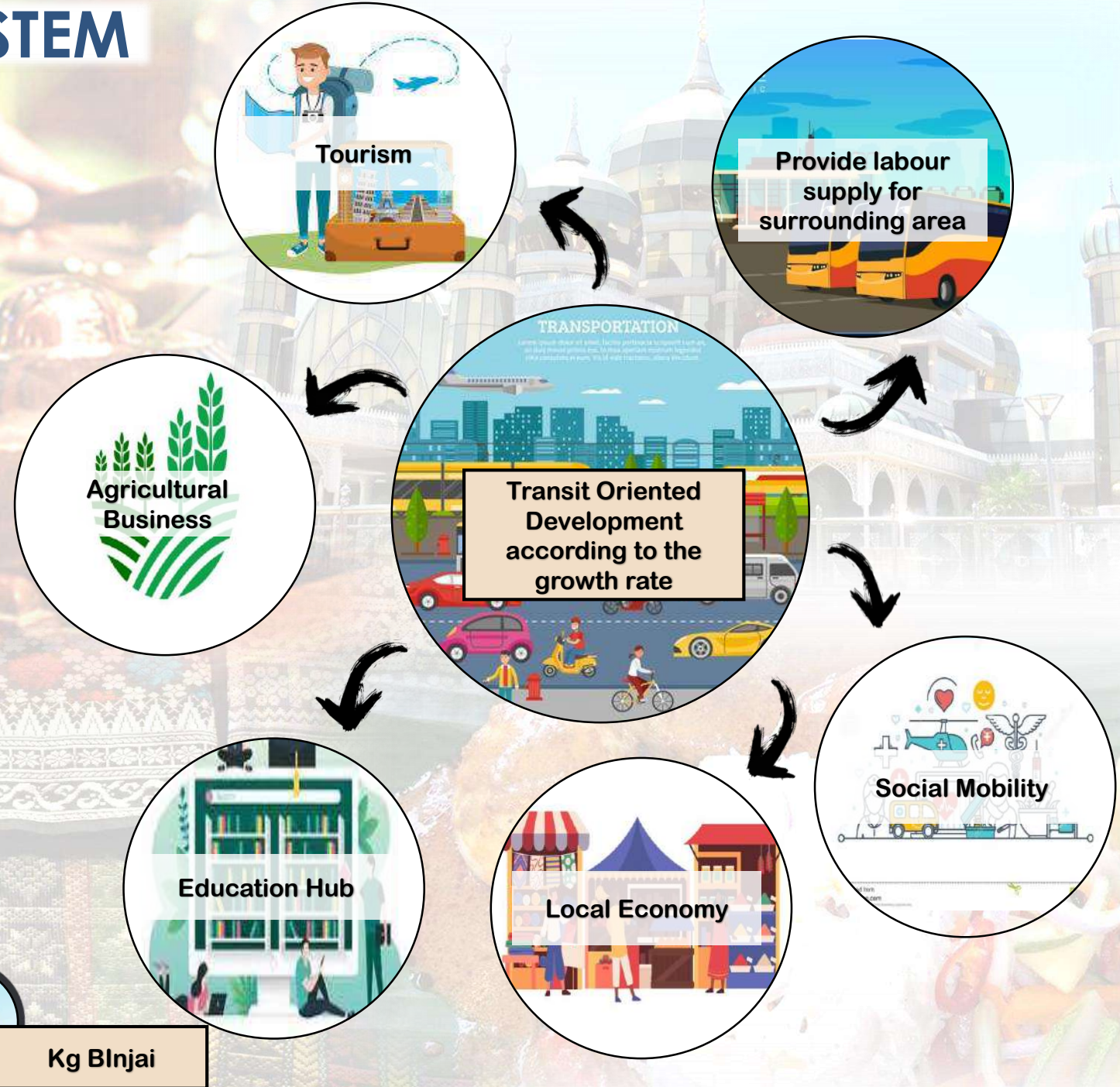
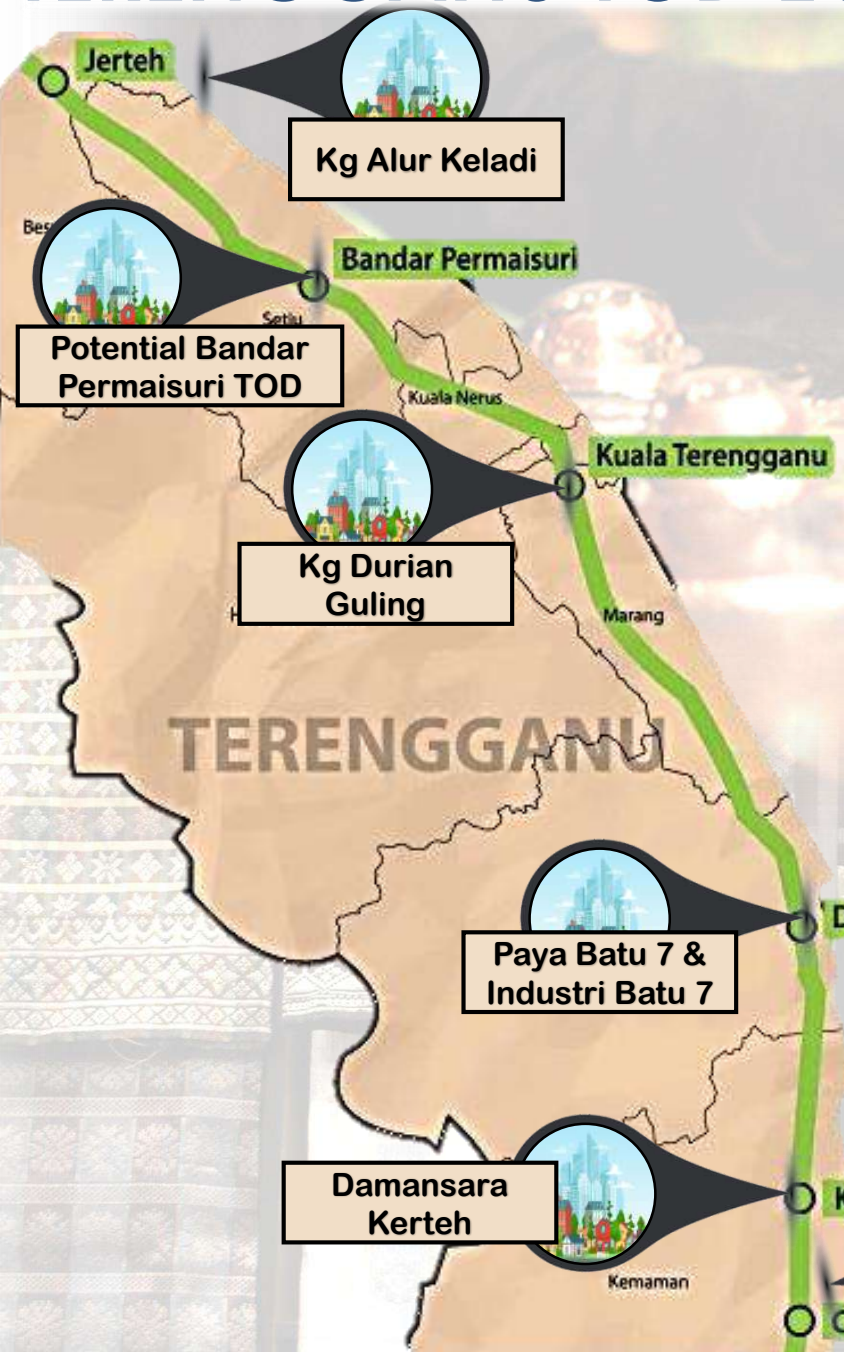


TERENGGANU EAP INDUSTRIAL ECOSYSTEM

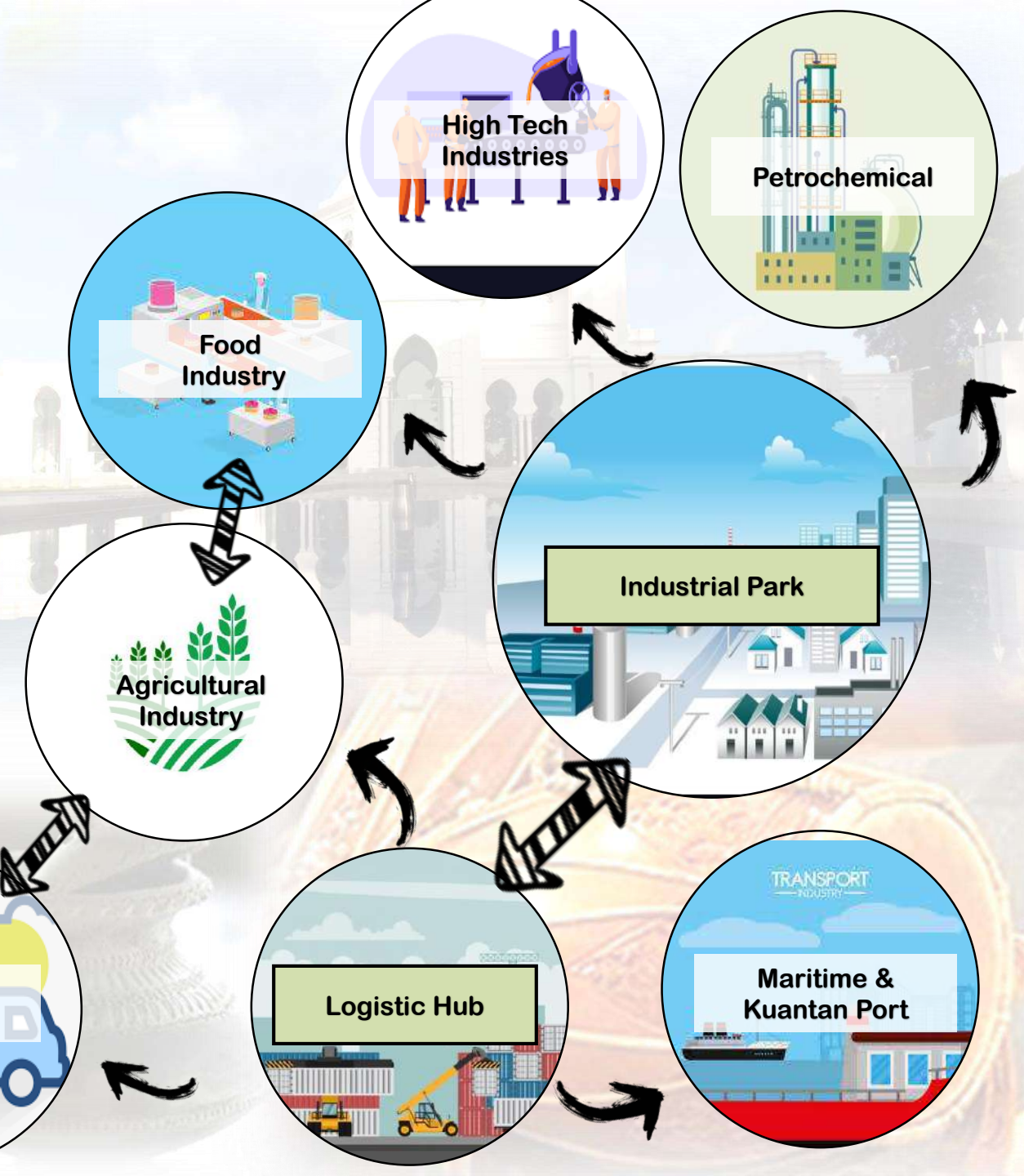
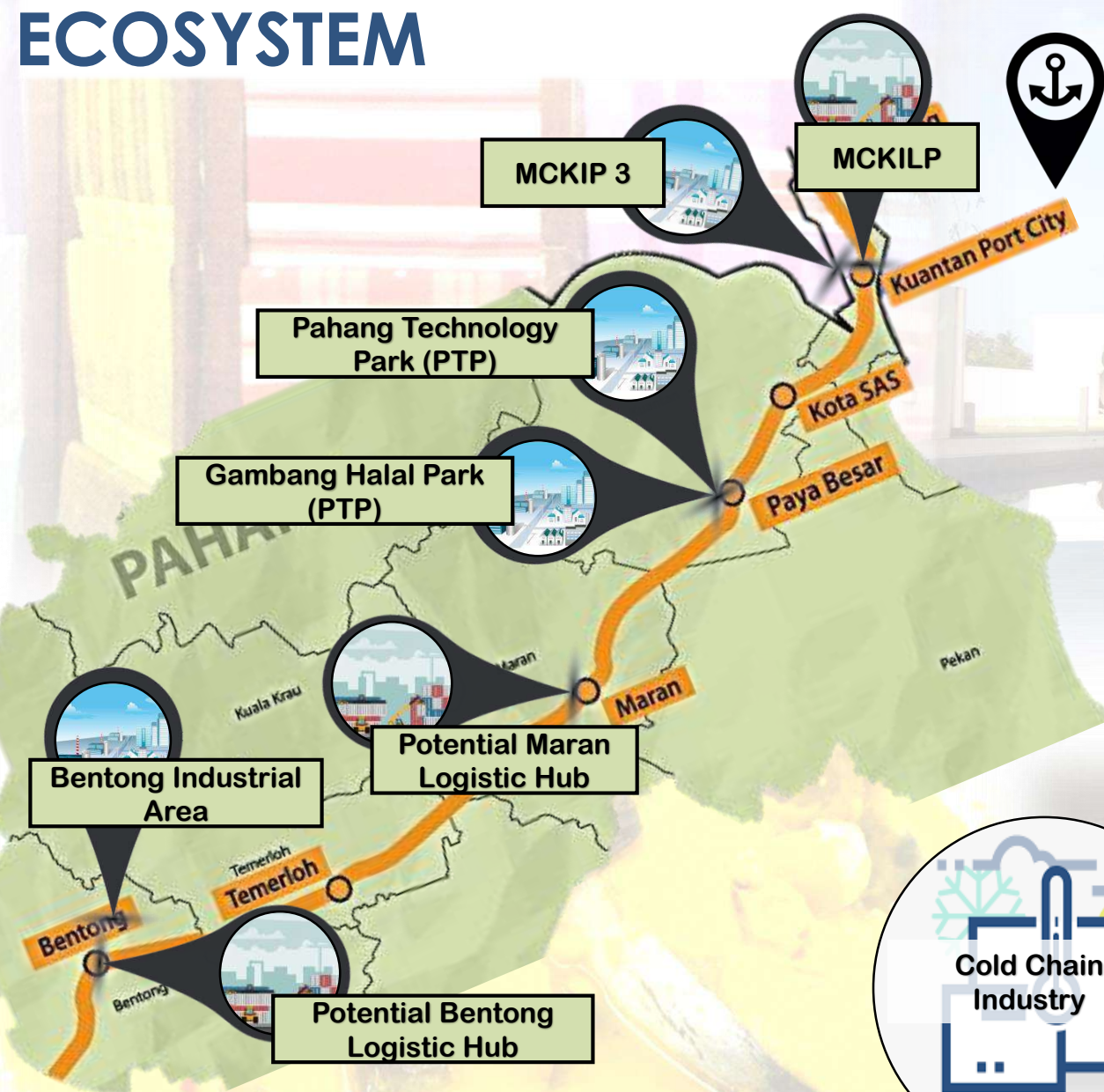
TERENGGANU



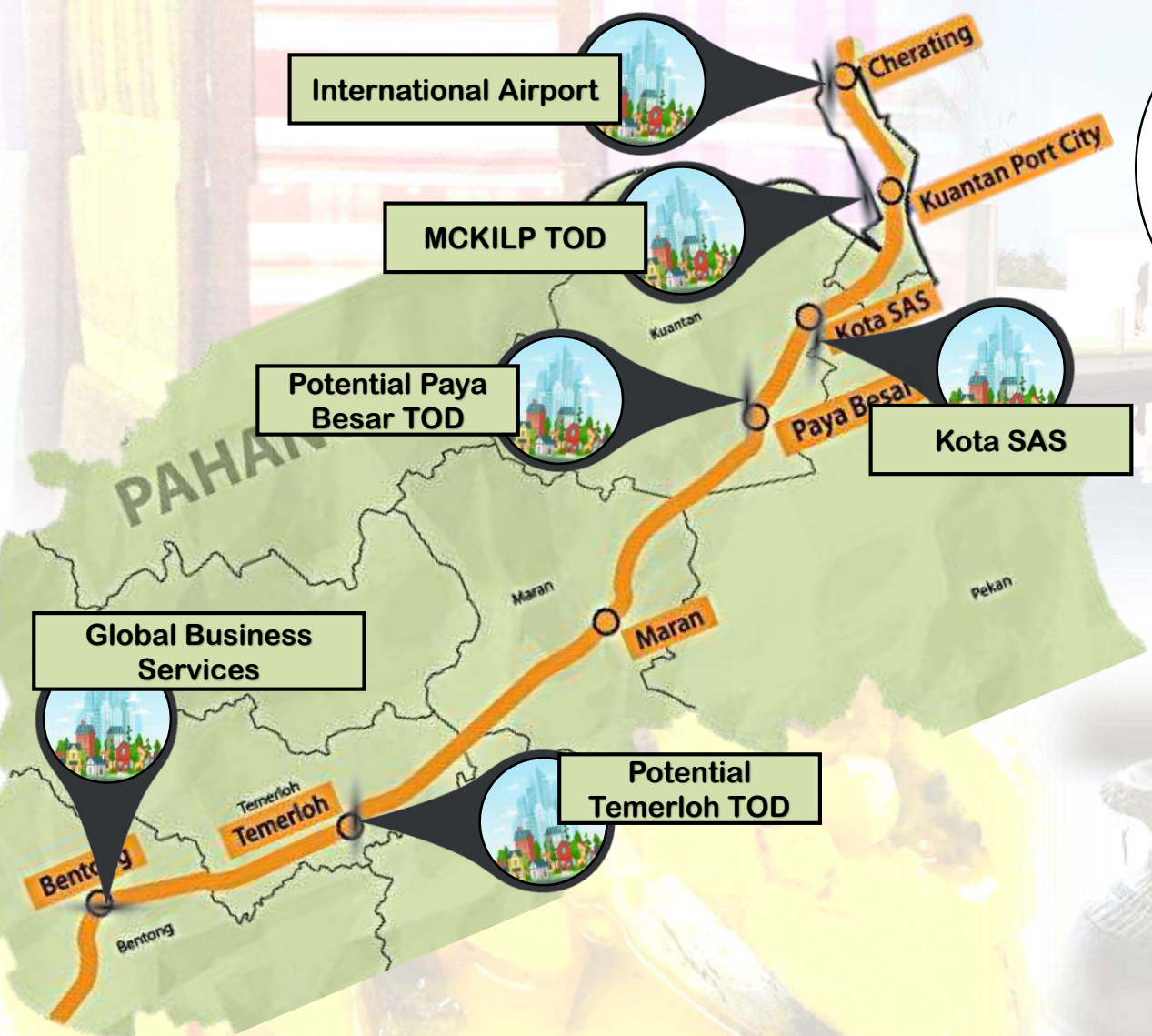
TERENGGANU TOD ECOSYSTEM



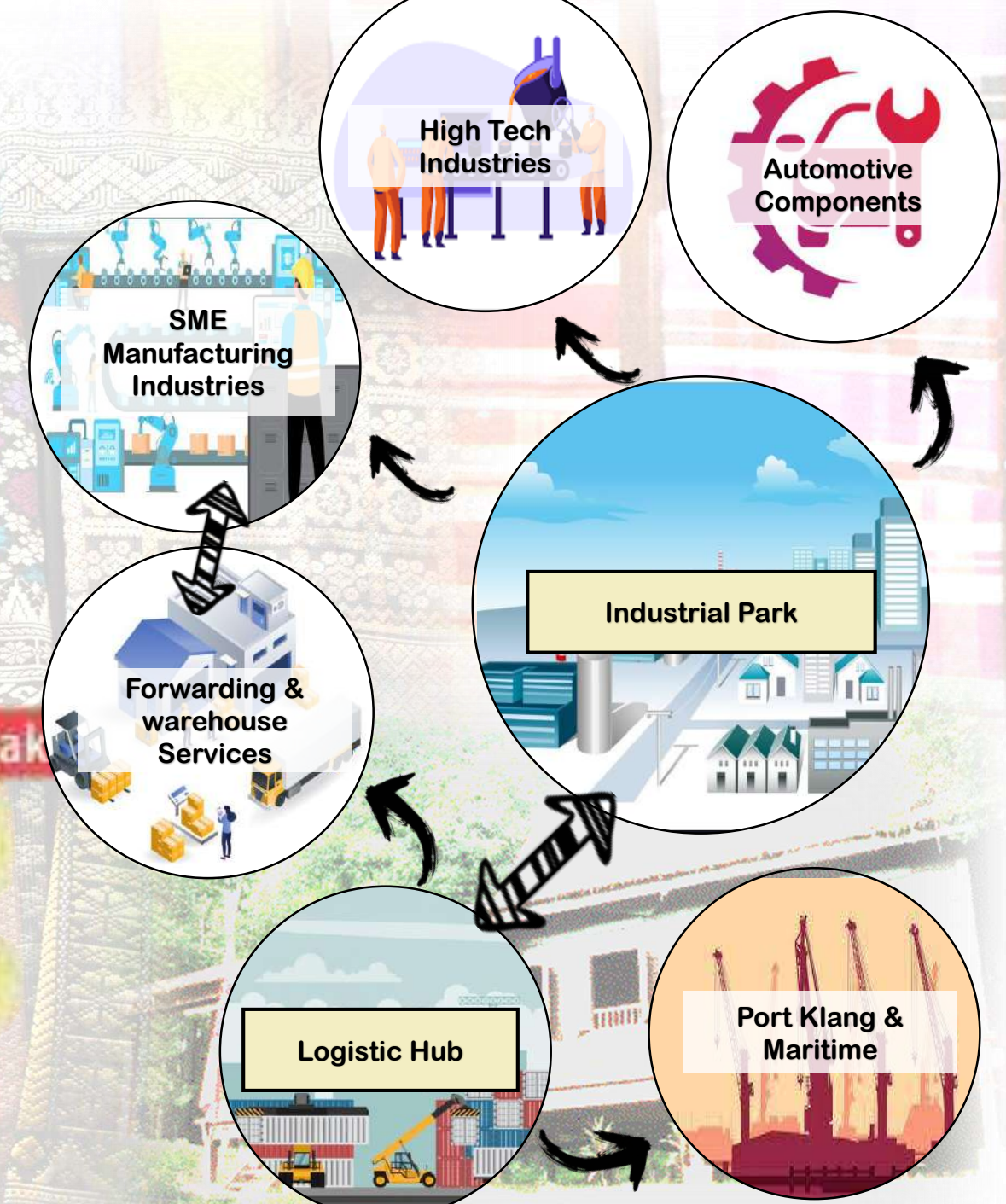
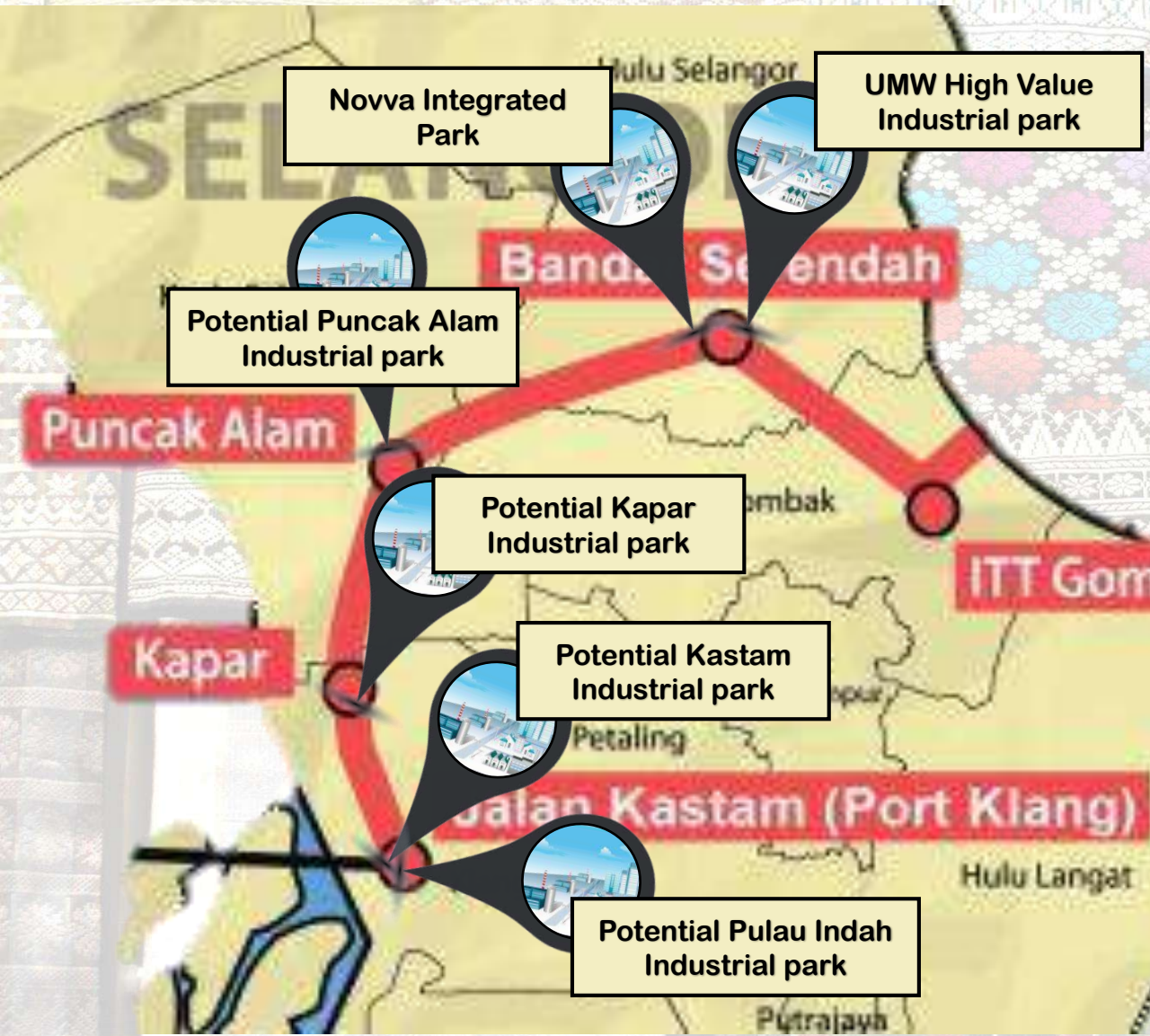
PAHANG EAP INDUSTRIAL ECOSYSTEM



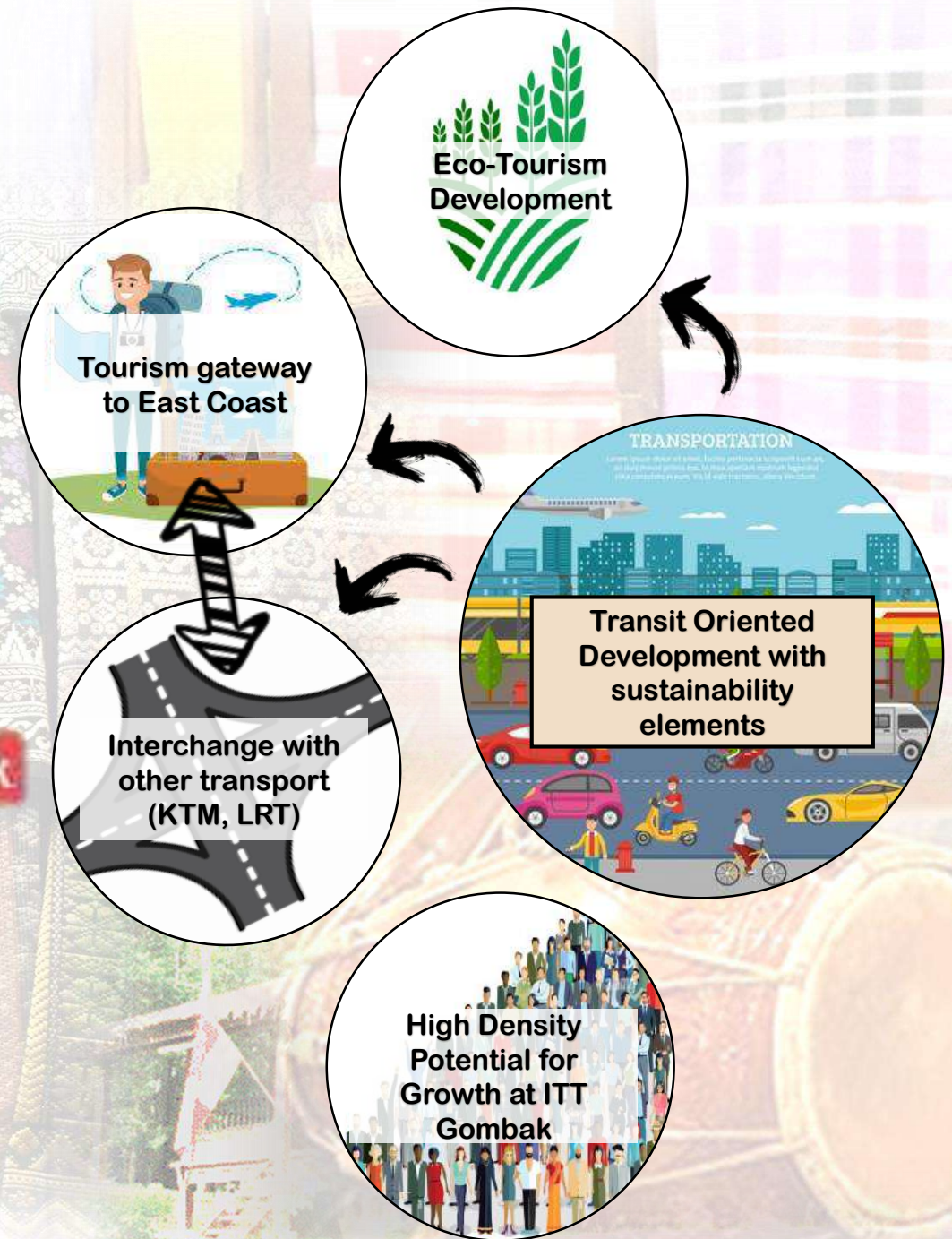
PAHANG TOD ECOSYSTEM



SELANGOR EAP INDUSTRIAL ECOSYSTEM



SELANGOR EAP TOD ECOSYSTEM




POTENTIAL HIGHLIGHTS

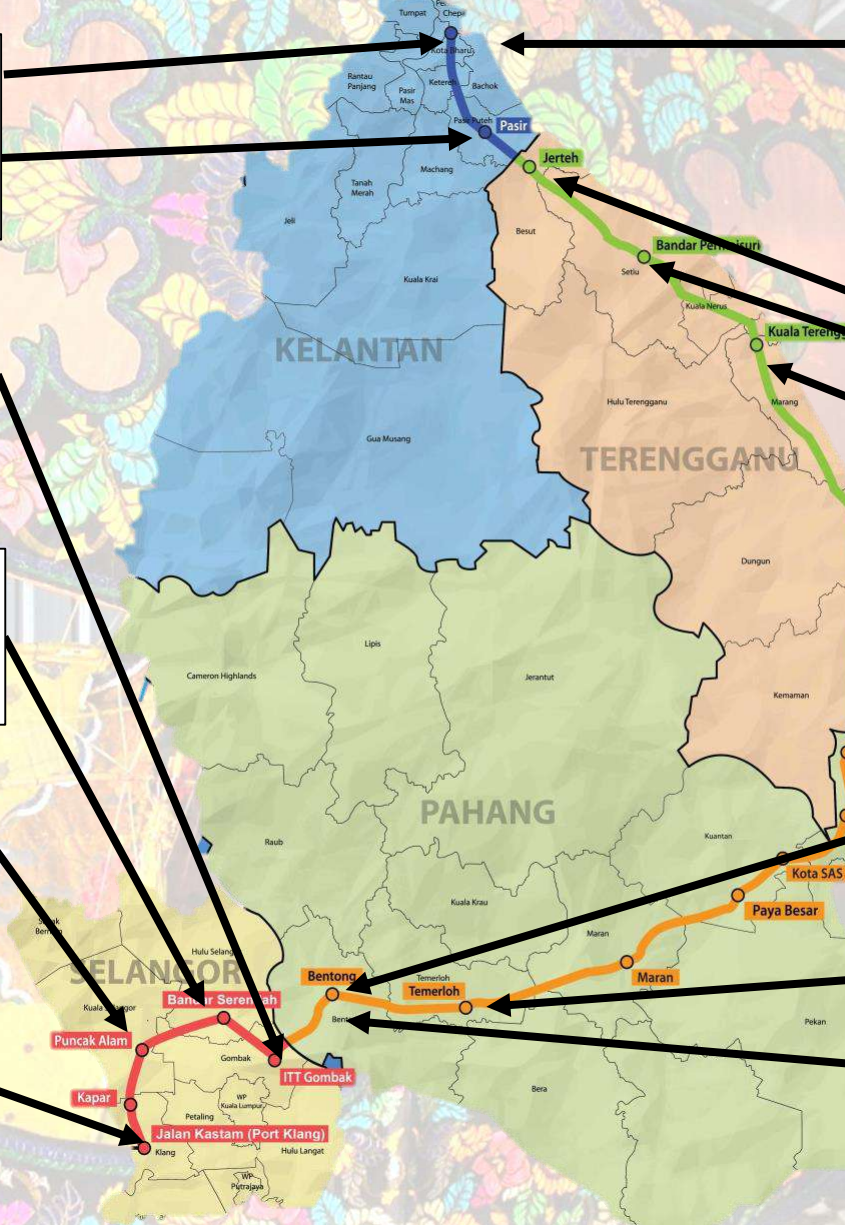

Kelantan to focus on developing Bandar Baru Tunjong and Tok Bali Port
7 March 2024


Gombak to be next integrated transportation hub
Monday, 24 Oct 2016


Serendah Bypass can ease congestion at KL rail line
Tuesday, May 18th, 2021


Shareholders approve Sime Darby property's industrial growth strategy via RM618 million land acquisition
24 May 2023


PKNS has identified several locations for foreign worker dormitories
05/12/2022




KB Sentral bus terminal expected to be completed by end 2026
12 Mar 2023


Terengganu Keen On Implementing TOD Around Six ECRL Stations
4 October 2023



Integrated terminal set to boost Bentong as tourism and transportation hub
4 December 2023



Pahang Barat Plus set to gather momentum in next five years
4 July 2023

03 ECONOMIC ACCELERATOR PROJECTS (EAP)

SUCCESS STORIES – IN DETAIL

SUCCESS STORY - LOGISTICS HUB: MALAYSIA-CHINA KUANTAN INTERNATIONAL LOGISTICS PARK

IJM partners CHEC for Malaysia-China Kuantan International Logistics Park

New logistics park set to transform MCKIP into premier industrial hub

The 640-acre site is targeted to attract US\$4 billion of foreign investments and create 20,000 jobs.

FMT Business - 07 Apr 2023, 8:00pm

CORPORATE NEWS

Wednesday, 03 Aug 2022



MCKILP

Proximity to:

- ECRL Kuantan Port City station
- Kuantan Port



SUCCESS STORY - KOTASAS



KOTASAS
BANDAR BARU KUANTAN

- Proximity to:
- ECRL KotaSAS station
 - Pahang state administration centre



SUCCESS STORY - UMW HIGH VALUE MANUFACTURING PARK

UMW disposes of 140 acres of land in Serendah to LONGi for RM304.9m

Surin Murugiah / theedgemarkets.com August 31, 2022 | Updated 1 year ago



BUSINESS TIMES

HOME

CORPORATE

ECONOMY

FEATURE

CARS BIKES TRUCKS

SME

ESG

UMW Holdings sells 8.99 hectare land in Serendah to Perodua for RM52.27mil

By S. Joan Santani - December 5, 2023 @ 9:11am



The Star

StarPlus News Asear

TOPICS : StarExtra Flood Alert StarESG Urban Biodiversity True or Not SOBA 202

DS Sigma unit buys land in Serendah for RM12mil

Proximity to:

- ECRL Serendah station
- KTMB Serendah station



UMW
HIGH-VALUE
MANUFACTURING PARK

04 ECONOMIC ACCELERATOR PROJECTS (EAP)

MOVING FORWARD

WAY FORWARD



Engaging and Collaborating
with Key Stakeholders to
Address Prevalent Issues



Bridging for Funding



Targeted Promotion to Boost
Awareness



**Alignment of Federal and
State Government Policies**
to Serve National Agendas



Improving Ease of Doing
Business



**Leveraging on Existing
Development to Stimulate
Economic Activities**

05 ECONOMIC ACCELERATOR PROJECTS (EAP)

MIDA'S FACILITATION

Investors Journey

MIDA's Organisation Structure



(Manufacturing Licence/Tax Incentives/
Status Approval)



(Expatriate
Posts)



Evaluation and
Approval of
Customs Duty
Exemption



Compliance



Facilitation



Foreign
Direct
Investment

Domestic
Direct
Investment

Cross
Border
Investment

- Electrical & Electronics
- Machinery & Metal
- Building Technology & Lifestyle
- Transportation Technology
- Chemical & Advanced Materials
- Food Technology & Resource Based Industries
- Life Sciences & Medical Technology

Manufacturing

- Oil & Gas, Maritime & Logistics Services
- Green Technology
- Healthcare, Education & Hospitality
- Business Services & Regional Operations
- Advanced Technology and Sustainability

Services

Industry
Talent
Management
& Expatriates

MIDA State
Offices

Tariff

Licensing &
Incentive
Compliance

Post-
Investment

Invest Malaysia Facilitation Centre (IMFC)





- To facilitate business involving the investor's journey at various levels in the manufacturing sector and selected services sectors.
- To speed up the various approval processes, including providing consultation and advisory services, as well as reducing bureaucracy in the public services delivery.
- To bring together several government ministries and agencies, as well as various facilities under one roof, as an important step in supporting the intention of the New Industrial Master Plan 2030.
- To enable Malaysia to be a premier investor-friendly and business-friendly destination in the region, based on the National Investment Aspirations

IMFC

PUSAT MEMUDAHCARA PELABURAN MALAYSIA
(INVEST MALAYSIA FACILITATION CENTRE)

1ST DECEMBER 2023 –
IMFC was established.

ADVERTISE WITH US



MIDA WEBSITE

MIDA HQ DIGITAL SIGNAGE

INVEST MALAYSIA E-NEWSLETTER

To reserve advertising space, or if you have any questions, please contact:

Fatmah Ahmad
Director, Corporate Communications Division
Tel: 603-2263 2428
Email: fatmah@mida.gov.my

Nur Farahin Mohamad Zainol
Assistant Director, Corporate Communications Division
Tel: 03-2267 3585
Email: nurfarahin@mida.gov.my



MIDA is now on Twitter, Facebook Instagram, LinkedIn and YouTube! Follow us on our social media for real-time updates and information about the investment landscape of Malaysia.

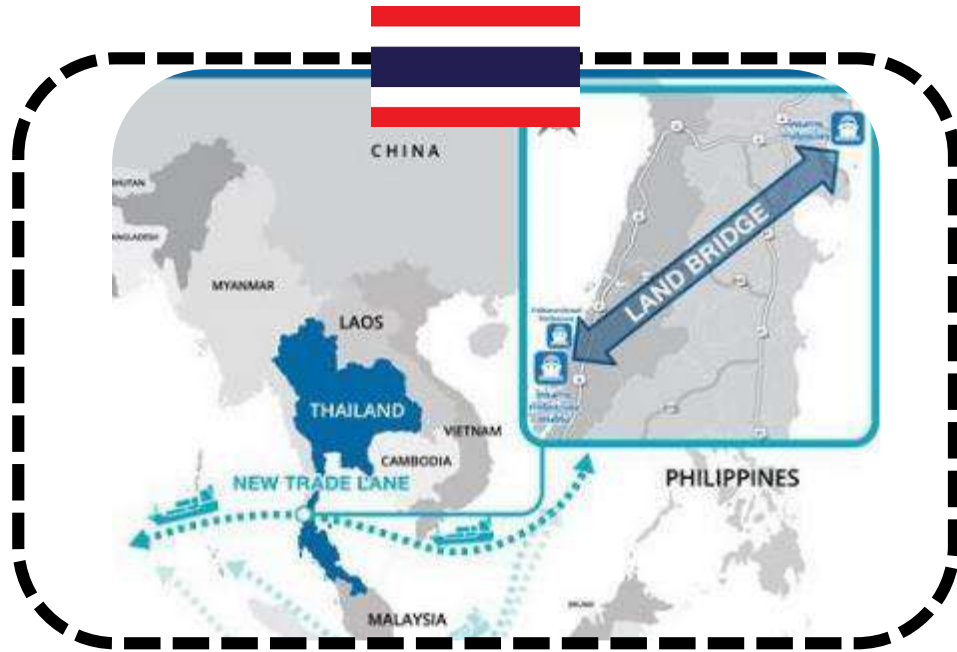


Twitter URL : @officialMIDA | **Facebook** URL : @officialMIDA |
Instagram URL : @officialMIDA | **LinkedIn** URL : @officialMIDA |
Youtube URL : @officialMIDA

Thank You.

Appendices

THAILAND OUTLOOK : DEVELOPMENT OF THE LAND BRIDGE BETWEEN CHUMPHON – RANONG PORT



Proposal

Comprises of 3 Mega-Projects



Construction of the dual-track railways and the new Motorway (Ranong-Chumphon)



Construction of the new deep-sea port at Ranong and Chumphon



Development of Ranong multi-purpose terminal and Development of the waterway of Ranong Port

- Aims to capture oil cargo from the Gulf to Far East. Longer term to have 30% cargo from Melaka Straits.
- The land bridge will offer an alternative route and cut shipping time up to 4 days.
- Project is estimated to cost about US\$28 billion (RM134 billion).
- Expected benefits includes boosting economic development in the southern Thailand & improving Thailand's logistic index.

TheStar

KB Sentral bus terminal expected to be completed by end 2026

12 Mar 2023

KOTA BARU: The new Kota Baru Sentral (KB Sentral) Bus Terminal, with an estimated value of RM64mil, is expected to be completed by the end of 2026, said Kelantan Menteri Besar Datuk Ahmad Yakob.

He said the project, which was developed as a Transit Oriented Development Area, would commence in the near future on 2.02 hectares of land near Mukim Pendek, here.

He added that the KB Sentral terminal is adjacent to the proposed East Coast Rail Link (ECRL) project, and will be equipped with green technology, pedestrian and disabled-friendly, besides having public facilities like a convention centre, public parking, and a hotel.

"The development of this project will be carried out via privatisation, with all land and development costs will be fully borne by the developer.





Terengganu Keen On Implementing TOD Around Six ECRL Stations

4 October 2023

KUALA TERENGGANU – The Terengganu government will implement Transit-Oriented Development (TOD) in the areas around six stations of the East Coast Rail Link (ECRL) project in the state.

Menteri Besar Datuk Dr Ahmad Samsuri Mokhtar said this was in line with the state government's aspiration to transform those areas into catalysts for economic growth and new industries in the state.

He said that to make this aspiration a reality, the relevant local authorities are currently developing a TOD master plan for those areas, which is expected to bring economic benefits to the local community.

Terengganu laksana sistem pembangunan TOD di enam lokasi stesen ECRL



Gambar hiasan

POTENTIAL HIGHLIGHTS

The Star

Gombak to be next integrated transportation hub

Monday, 24 Oct 2016

PETALING JAYA: Gombak will be the next integrated transportation hub for Greater Kuala Lumpur when the East Coast Railway Line (ECRL) is up and running.



The Malaysian Reserve

Serendah Bypass can ease congestion at KL rail line

Tuesday, May 18th, 2021

KERETAPI Tanah Melayu Bhd (KTMB) is looking to fully utilise the upcoming Serendah-Port Klang Rail Bypass to transport its cargo, which is now shared with passenger trains and has to go through Kuala Lumpur (KL) city centre.

In a statement yesterday, the state-owned railway operator said the construction of Serendah Bypass, which recently received the go-ahead from Putrajaya, will increase the efficiency of the rail services as it would bypass the busy Klang Valley.

KTMB said the project will further strengthen the competitiveness of direct rail cargo transportation to Port Klang. It will also be a solution to the issue of congestion at the KL railway line.

The railway operator said a total of 500,000 twenty-foot equivalent units (TEUs) are expected to be transported annually through the Serendah Bypass network.

“The Serendah Bypass will strengthen the logistics supply chain and improve the efficiency of rail cargo transportation in the country,” the company said.



PKNS has identified several locations for foreign worker dormitories

05/12/2022

SHAH ALAM, Dec 5 — Selangor State Development Corporation (PKNS) has identified several strategic and suitable locations to be used as Foreign Worker Hostel Centres (Papa) in Selangor.

Selangor state executive councillor for local government and new village development Ng Sze Han said that for now, the state government through the Kajang Municipal Council has approved planning permission, infrastructure and building plans for the Papa project located in the Kampung Baru Balakong industrial area, Cheras.

