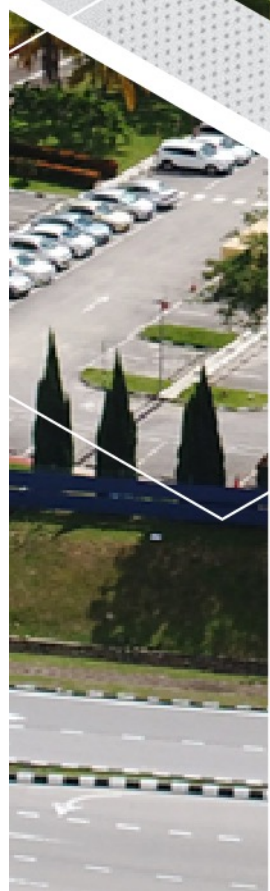


KTPC

KULIM TECHNOLOGY PARK CORPORATION



COMPANY PROFILE



ABOUT US

THE DEVELOPER & MANAGER OF KULIM HI-TECH PARK

Kulim Technology Park Corporation Sdn. Bhd. (KTPC) is a private limited company wholly owned by Perbadanan Kemajuan Negeri Kedah (PKNK).

KTPC is entrusted with the development and management of Kulim Hi-Tech Park (KHTP), a national project funded by the Government of Malaysia. KTPC is located in Kulim, Kedah within the Northern Economic Corridor.

As a fully integrated high technology park with the tagline "Leading Global Science City", KHTP is aimed to lead Malaysia's forays into a more robust industrial economy focusing on high technology manufacturing, advanced technologies and R&D activities.

Essentially, as the developer and manager of KHTP, KTPC is responsible to :

- develop and manage the whole ecosystem of KHTP;
- promote and facilitate the investment for KHTP; and
- provide corporate and management support services.

KTPC has expanded its range of services and activities through four wholly owned subsidiaries, engaging in :

- clubhouse and 18-hole golfing facilities;
- engineering and ICT training services;
- biotechnology services; and
- medical sterilisation services.



Industrial Zone Phase 1
1994



Industrial Zone Phase 2
2001



Industrial Zone Phase 4
2016



6 DEVELOPMENT ZONE
Industrial
Urban
R&D and Training
Institutional
Amenities
Residential

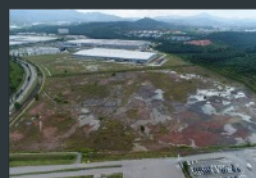
1992
Groundbreaking



1996
Official Opening



2010
Industrial Zone Phase 3



2021
Total Area of 4,736 acres





KULIM HI-TECH PARK

THE 1ST FULLY INTEGRATED HI-TECH PARK IN MALAYSIA

Kulim Hi-Tech Park (KHTP) officially operated in 1996. It is located in the district of Kulim — a growing township in the state of Kedah, the northern region of Peninsular Malaysia.

With excellent infrastructure, quick intermodal logistics connectivity, exceptional support services and abundant quality talents, KHTP has become an ideal location for both local and multinational companies to set up their operation and produce their high value products in a conducive world-class business environment.



Centrally located within the North Corridor Economic Region (NCER)



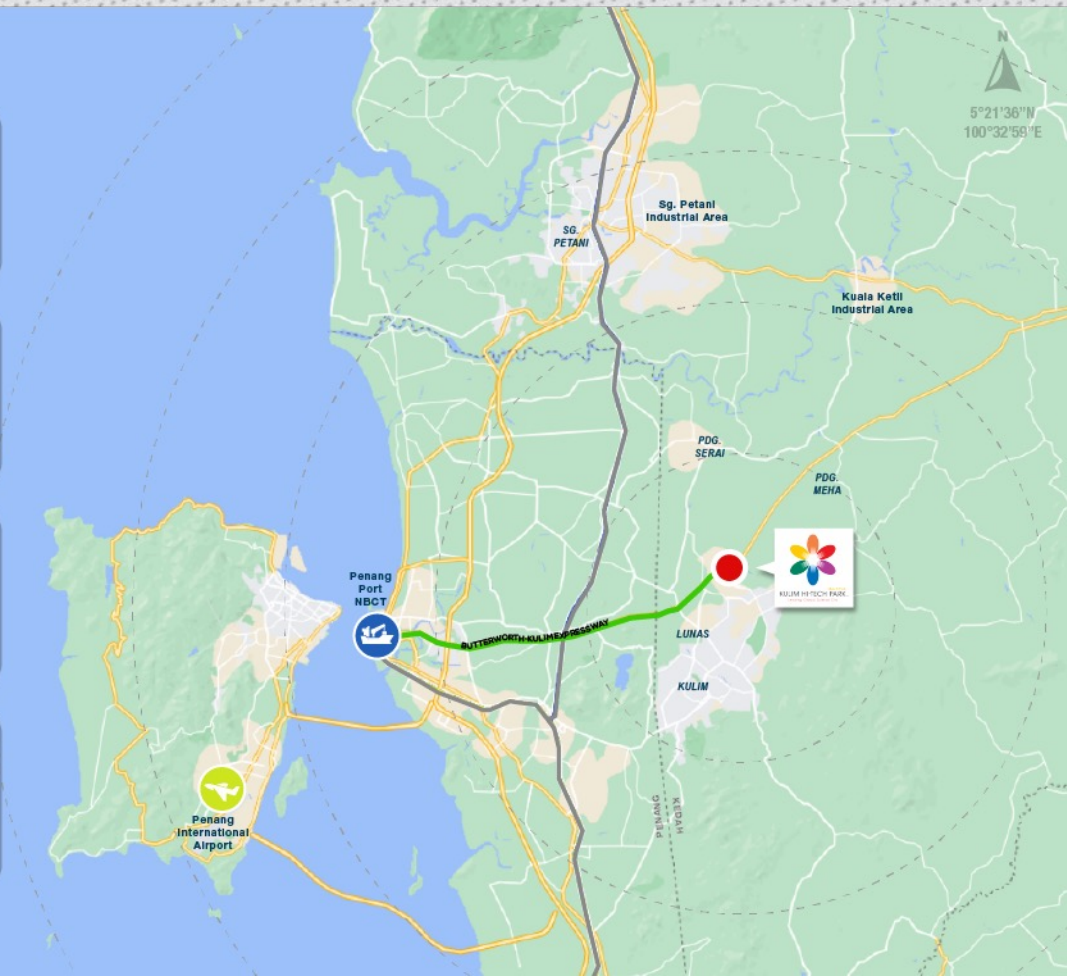
Accessible via Butterworth-Kulim Expressway (BKE)



26 km to North Butterworth Container Terminal (NBCT)



30 km to Penang International Airport, Bayan Lepas



MASTERPLAN OF KHTP

The vibrant colors in the logo represent the six dedicated development zones of KHTP — industrial (•), urban (•), R&D and training (•), institutional (•), amenity (•) and residential (•).



Total area

4,736 acres / 19.16 sq. km.



Total workforce

34,000 workforce
(80% highly skilled workers, 85 expatriates)



Total investment

RM 124.9 billion (1996- 2022 (H1))

High quality
infrastructure

Ready
utilities

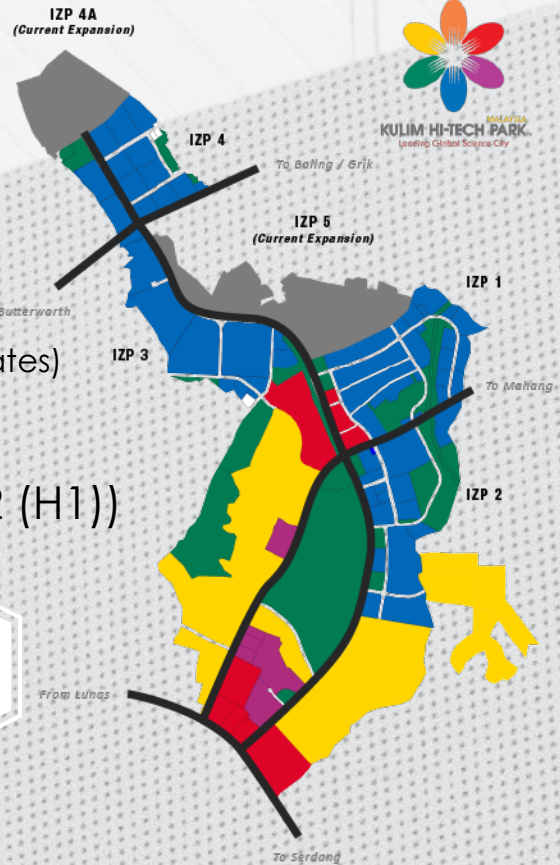
Dedicated
local
authorities

Access to
abundant
talent

Proximity to
industrial
eco-system

Innovative
business
incentives

Political &
economic
stability



* Data as at September 2021

DEDICATED 6 DEVELOPMENT ZONES



— Industrial



— Urban



— R&D and Training



— Institutional



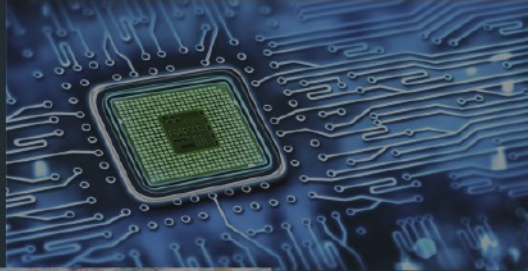
— Amenities



— Residential

13 PROMOTED INDUSTRIES

**Wafer Fabrication &
Related Activities**



**Semiconductor &
Related Activities**

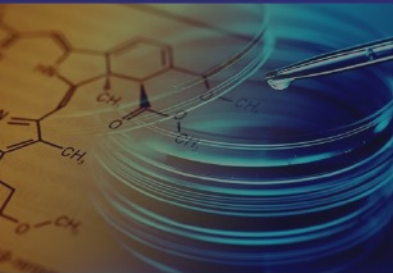
Aerospace



Green Energy



**Advanced
Materials**



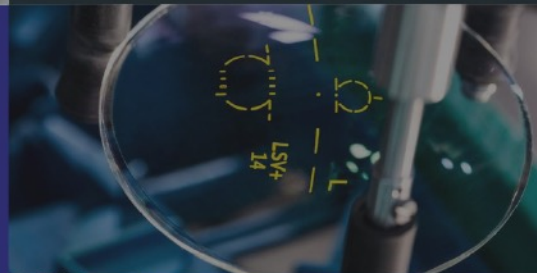
**Advanced
Electronic Materials**



**Medical &
Scientific Instruments**



**Optical & Electro
Optical Application**



**Process Control &
Automation Equipment**



Optoelectronics



Biotechnology



**Contract R&D
Services**



**New & Emerging
Technologies**