



MIDA INVEST SERIES UNFOLDING STATES' BUSINESS POTENTIAL TERENGGANU

A Briefing by Terengganu
State Government
Agencies



25 August 2022
(Thursday)



2:30 PM



**Perdana Hall, Level 10,
MIDA Sentral**



@officialMIDA



@officialMIDA



@officialMIDA



@officialMIDA



MIDA TV



Malaysian Investment
Development Authority



MIDA
MALAYSIAN INVESTMENT DEVELOPMENT AUTHORITY

INVEST TERENGGANU

SPEAKER

**Y.Bhg Dato' Tun Ahmad Faisal
Bin Tun Abdul Razak**

*Deputy State Secretary (Development)/
Director, State Terengganu Economy
Planning Unit*



EMBARKING INTO A NEW JOURNEY, CREATING YOUR FUTURE IN TERENGGANU

Dato' Tun Ahmad Faisal Bin Tun Abdul Razak
*Deputy State Secretary (Development)/
Director, State Terengganu Economy Planning Unit*

WHO WE ARE

INVEST TERENGGANU

Invest Terengganu is a division in Terengganu State Economic Planning Unit that aims to advice socio-economic issues and increase household income through new business opportunities, entrepreneurs, and promote economic activities across urban areas of the state. Its vision and mission is to be a major player in the country's investment hub, working towards creating an attractive environment for investors and explore new opportunities along these lines.

OBJECTIVES

- Focused on addressing socio-economic issues
- Raising household incomes through new business opportunities
- Developing entrepreneurs
- Increasing economic activities in both urban and rural areas particularly in the State of Terengganu.

VISION & MISSION



Part of the nation's leading investment hub and solution provider

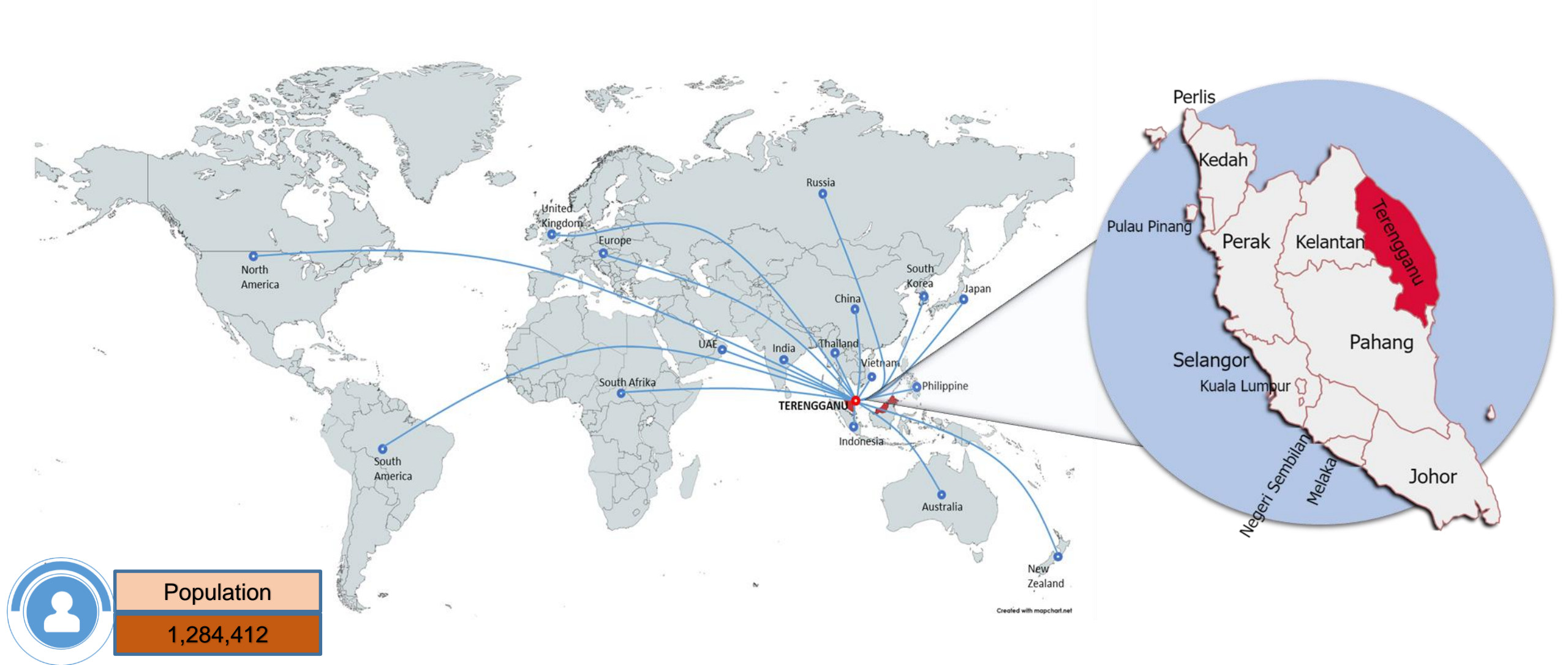


Conducive investment-friendly environment



Explore new investments

Investment Gateway to ASEAN, Asia Pacific, Far East and Americas



OUR MESSAGES

1

Opening up new business opportunities

2

Increasing income levels and job creations

3

Improving the quality of life

4

Modernising quality infrastructure & lifestyle

5

Creating a First-world and IT-savvy mentality

6

Diversifying economy as per-economic clusters defined



WHY INVEST IN TERENGGANU

"Your investment
destiny starts here,
Terengganu.
We will transform
your investment
into reality"

The Chief Minister of Terengganu



Strategic
Shipping Route



Rich in
Natural
Resources



Attractive
Incentives



Good
Infrastructure



Lower Cost
of Doing
Business



Oil & Gas
origin of the
Peninsular
Malaysia



Political
Stability



Talented
Workforce



Readiness
of Supply
Chain

CLUSTERS



Tourism

- Urban Tourism: Kuala Terengganu as the main gateway to Tourism Industry.
- Eco and Island Tourism: the strength of Terengganu Tourism Industry.
- Cultural Heritage Tourism: highlighting culture to the world.
- 202 Tourism Products including new and existing, providing a huge potential for investment in the Tourism Industry.



Manufacturing, Oil & Gas

- Oil and Gas industry focuses onshore and offshore activities-upstream, midstream and downstream.
- Maritime/Marine Industry focuses on shipbuilding, maintenance, repair and overhaul.
- The Timber and Wood-based industry serves as a foundation for future manufacturing needs.
- The Industry and Infrastructure Development is based on the IR 4.0.



Biotechnology

- The Biotech Industry focuses on the production of bio-based product renewable waste (*feedstock, biomass, agriculture and industrial waste*)
- Agriculture Biotechnology involves aquaculture and agriculture projects and at the same time strengthening the supply chain in Biotechnology
- Bio-medical (Pharmaceutical and Wellness)



Communications, Content, Infrastructure & Emerging Technologies

- Content Factory: focuses on Educational Edutainment and Family Entertainment
- Digital Terengganu: an ecosystem that will be a beacon to entice local, national and global business opportunities and investors to start their business.
- Commercialisation of Emerging Technology: Terengganu as a centre of excellence for simulation, visualization, non-destructive testing, as well as data management and analytics

GDP BY ECONOMIC ACTIVITIES,

AT CONSTANT 2015 PRICES



Estimated as of 2021

RESOURCES

835,400
Working
Age Group
(15-64)

472,700
Labour Force

451,800
Employment

455,382
(Ha)
Agriculture
Area

27.2
(MW)
Private Solar
PowerPlant

558,216
(Ha)
Permanent
Forest
Reserve

15,000
(Ha)
Wildlife Forest
Reserve

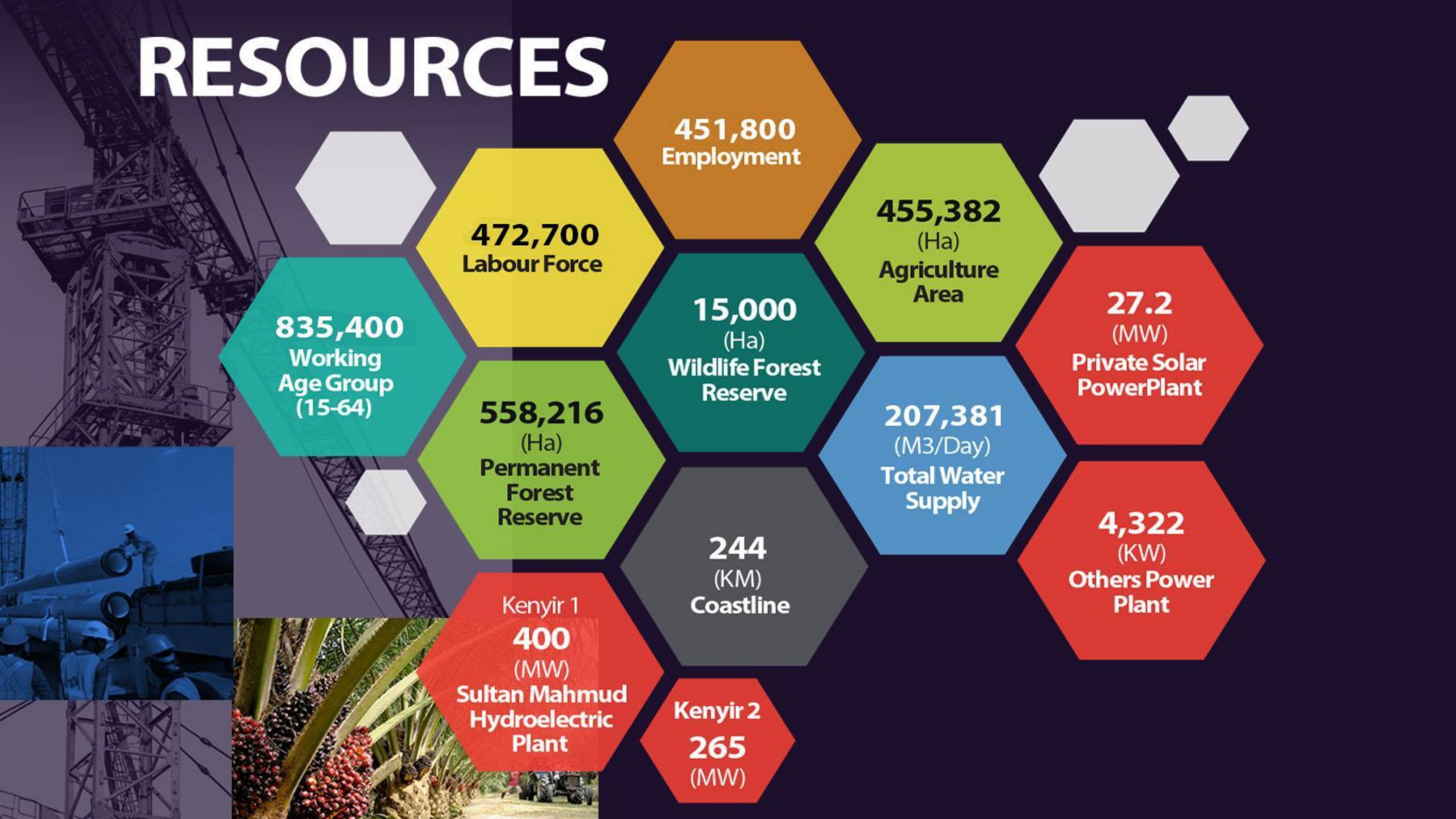
207,381
(M3/Day)
Total Water
Supply

4,322
(KW)
Others Power
Plant

244
(KM)
Coastline

Kenyir 1
400
(MW)
Sultan Mahmud
Hydroelectric
Plant

Kenyir 2
265
(MW)



A high-speed train with a blue and yellow livery is traveling on a track under a cloudy sky.

EAST COAST RAILWAY LINK (ECRL)

3.5 hours from Kuala Terengganu to Kuala Lumpur with 7 stations including freed stations to support the economy of Terengganu

A Malaysia Airlines Boeing 747 is parked on a tarmac in front of an airport terminal with a traditional roof. A smaller propeller plane is also visible.

AIRPORTS

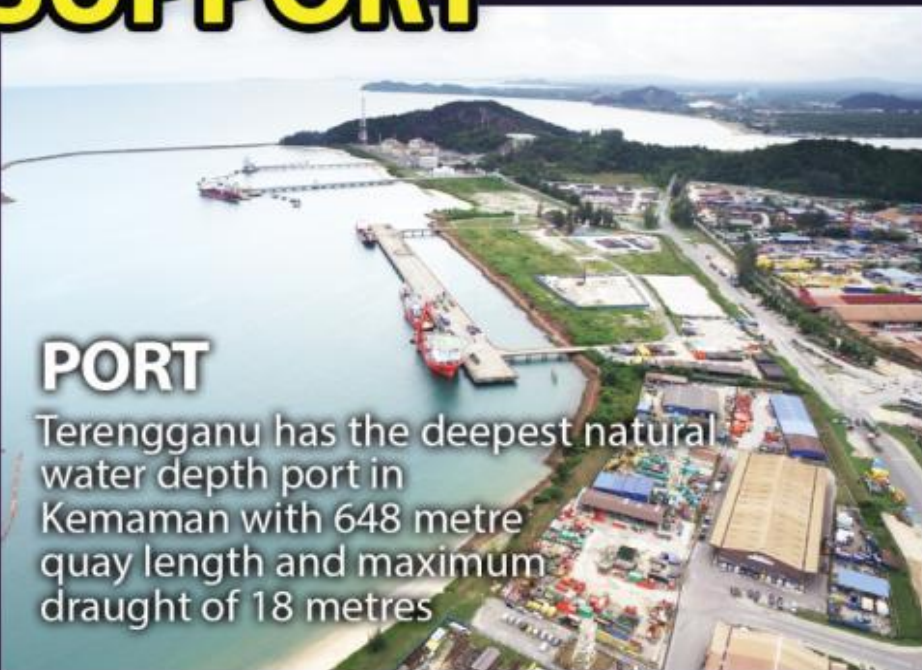
12 flights to-and-fro Kuala Lumpur every single day

LOGISTIC SUPPORT

A view of a multi-lane highway winding through a lush green landscape with hills in the background.

EAST COAST HIGHWAY

358 kilometres of dual-carriageways running from Kuala Terengganu to Gombak that takes only a 4-hour drive

An aerial view of a port facility with several large ships docked at long piers, surrounded by industrial buildings and infrastructure.

PORT

Terengganu has the deepest natural water depth port in Kemaman with 648 metre quay length and maximum draught of 18 metres

HUMAN CAPITAL DEVELOPMENT



Incentives on Talent Programme By ECERDC

- **ETEP – Place & Train**
(Investor will hire and train new employees for them to gain new skills)
- **EETEP Enhanced – Train & Place**
(Unemployed graduates and retrenched employees will be trained for placement in participating companies)



INCENTIVES

INCENTIVES BY MIDA

Major Incentives

- Pioneer Status – Income tax exemption ranging from 70% to 100% for a period of 5 or 10 years
- Investment Tax Allowance – 60% or 100% on qualifying capital expenditure for 5 years
- Reinvestment Allowance – 60% on qualifying capital expenditure for 15 consecutive years
- Import Duty Exemption – for raw materials /components and machinery & equipment

**Scan the QR code for more info.*



INCENTIVES BY ECERDC

Major Incentives

- Income tax exemption of 70% or 100% for 10 or 15 years commencing from the year company derives statutory income.
- Investment tax allowance equivalent to 100% of qualifying capital expenditure for 5 years.
- Stamp duty exemption on land or building acquired for approved project/activity.

**Scan the QR code for more info.*



INCENTIVES BY STATE GOVERNMENT

DISCOUNT

- * Refer to Valuation And Property Services Department (JPPH) or other Private Valuer

LEASE PAYMENT SCHEDULE

- * Include the Industrial land owned by any agency under the state government
- * Subject to the agency/land owner so that industrial development can be realized without any constraints

INFRASTRUCTURE

- * Prepare as needed and make a lease offer with the price from ready land or otherwise

SPECIAL TASK FORCE/ FAST LANE

- * Assist investors during dealings/ Pre- Consult with Local Authority

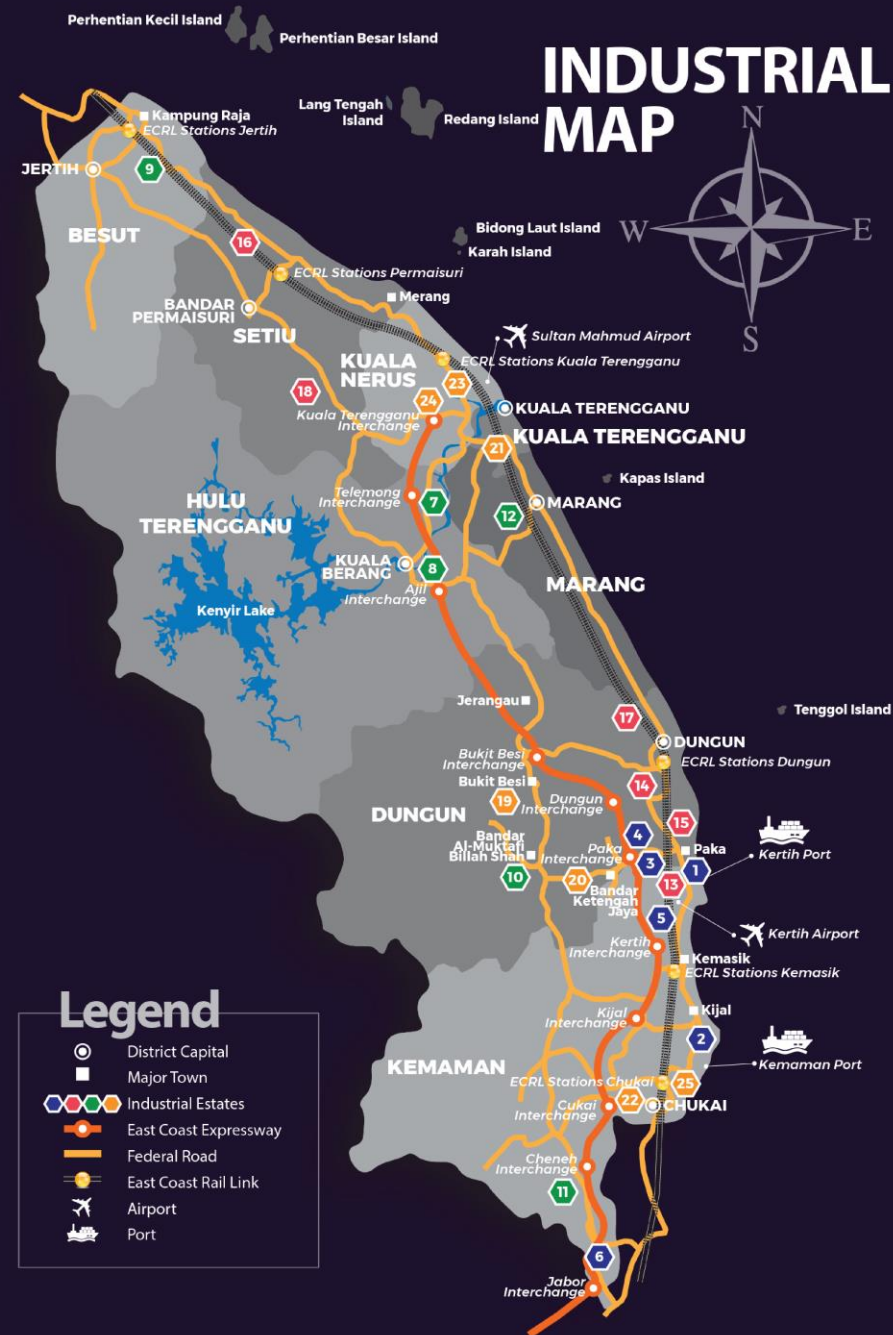
INDUSTRIAL FACILITIES

Heavy Industries, Biotechnology, Advanced Industries, Oil & Gas Based industries

1. Kertih Industrial Petroleum Complex
2. Teluk Kalong Industrial Estate
3. Lot Q, Kertih Biopolymer Park(KBP)
4. Santong Industrial Estate
5. Lot P, Kertih Industrial Estate
6. Perasing Industrial Estate

Support Services

13. Bukit Labuhan Industrial Estate
14. Batu 7 Industrial Estate
15. Char-Char / Paka Industrial Estate
16. Saujana Industrial Estate
17. Pulau Serai Industrial Estate
18. Sungai Bari Industrial Estate



25
INDUSTRIAL
ESTATES

Wood & Construction Based Industries

7. Wakaf Tapai Industrial Estate
8. Ajil Industrial Estate
9. Gong Medang Industrial Estate
10. Al-Muktafi Billah Shah Industrial Estate
11. Cheneh Industrial Estate
12. Bukit Kor Industrial Estate

SME/ Other Industries

19. Bukit Besi Industrial Estate
20. Ketengah Jaya Industrial Estate
21. Chendering Industrial Estate
22. Mak Lagam Industrial Estate
23. Gong Badak Industrial Estate
24. Batu Rakit Industrial Estate
25. Jakar Industrial Estate

New Industrial Area

- Pulau Kerengga Estate

AMONG INVESTORS IN TERENGGANU



Beautiful
Terengganu
Malaysia

TOURISM TERENGGANU



TOURISM DATA



Accommodations : 373 Hotel Rooms
 : 3,411 (Island)
 : 9,156 (Mainland)
 : 12,567 (Total)



Tour Operator & Travel Agent : 215



Tourist Guides : 105
 - Nature Guide : 64
 - City Guide : 41



Homestay : 7 Districts
 - Rooms : 178



TOURISTS ARRIVAL 2019
 Domestic Tourist : 4,251,584
 Foreign Tourist : 1,018,816
 Total : 5,270,400

NO	COUNTRY	TOURISTS
1	ITALY	23,238
2	CHINA	22,364
3	FRANCE	17,642
4	NETHERLANDS	4,944
5	JAPAN	4,888

INTERNATIONAL TOURIST IN
 MAIN RESORT ISLANDS IN
 TERENGGANU IN 2019

TOURISM CLUSTERS



**KUALA
TERENGGANU**



**ISLANDS &
BEACHES**



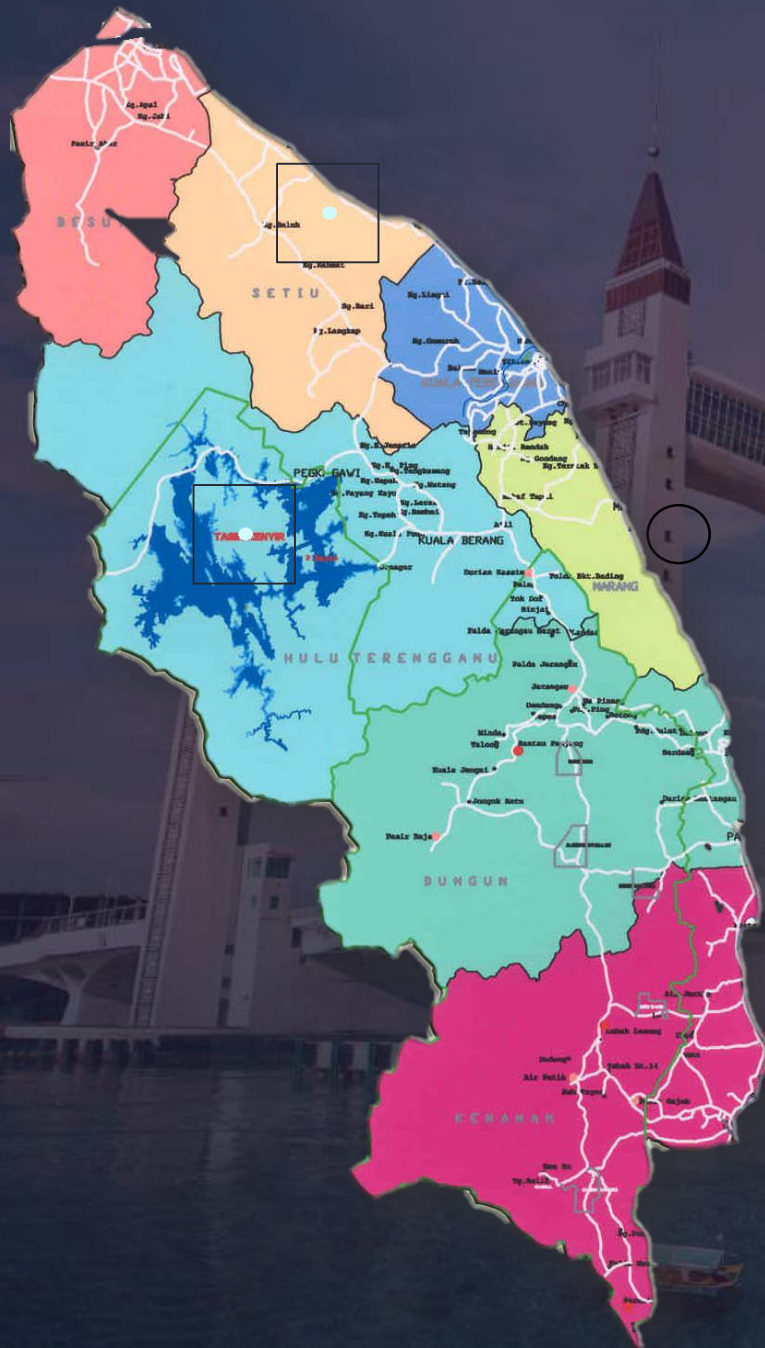
LAKE KENYIR



**CULTURE, ARTS &
HERITAGE**



NATURE



- **TASIK KENYIR (ECOTOURISM DESTINATION)**
- **SETIU WETLAND (PRESERVATION AND CONSERVATION)**

TERENGGANU TOURISM DEPARTMENT

TASIK KENYIR (ECOTOURISM DESTINATION)

- Tasik Kenyir is located Hulu Terengganu, Terengganu
- Total gazetted area of Tasik Kenyir **209,199 ha**
 - Land : **171,199 ha**
 - Waterbody: **38,000 ha**



PETUNJUK:

Jenis Guna Tanah

- Perumahan
- Komersial
- Industri
- Institusi Kemudahan Masyarakat
- Infrastruktur dan Utiliti
- Kawasan Lapang dan Rekreasi
- Tanah Kosong
- Pertanian
- Pengangkutan
- Hutan
- Badan Air

Lain-Lain Petunjuk:

- Jeti
- Kampung
- Setiu Boardwalk
- Zon Utama (Core Zone)
- Zon Penampan (Buffer Zone)
- Zon Peralihan (Transition Zone)
- Sempadan Daerah
- Sempadan Mukim Laut
- Cadangan Projek



- PETUNJUK:**
- Jenis Guna Tanah**
- | | |
|-------------------------------------------------------------------------------------|--------------------------------|
|  | Perumahan |
|  | Komersial |
|  | Industri |
|  | Institusi Kemudahan Masyarakat |
|  | Infrastruktur dan Utiliti |
|  | Kawasan Lapang dan Rekreasi |
|  | Tanah Kosong |
|  | Pertanian |
|  | Pengangkutan |
|  | Hutan |
|  | Badan Air |
- Lain-Lain Petunjuk:**
- | | |
|---------------------------------------------------------------------------------------|---------------------------------|
|  | Jeti |
|  | Kampung |
|  | Setiu Boardwalk |
|  | Zon Utama (Core Zone) |
|  | Zon Penampakan (Buffer Zone) |
|  | Zon Peralihan (Transition Zone) |
|  | Sempadan Daerah |
|  | Sempadan Mukim |
|  | Laut |
-  Cadangan Projek

RECOGNITIONS

PERHENTIAN ISLAND

2013 : Chosen by CNN
as the 13th Best Beach
in the World.

2010 : Chosen by The Lonely Planet
Travel Book as the 5th Best Beach to
Swing the Hammock in the World

DRAWBRIDGE

BEST NEW TOURISM ICON 2019
by Malaysian Tourism Council
Gold Awards

World Excellence Tourism
Award - BEST NEW MALAYSIA
TOURISM ICON 2020

TENGGOL ISLAND

"The Best Diving in Peninsular
Malaysia" by The Asian Diver
Magazine

KELAH SANCTUARY, LAKE KENYIR

Best Eco Tourism Initiative,
Malaysia Tourism Council Gold
Awards (MTCCA) 2021

LANG TENGAH ISLAND

"Maldives of Southeast Asia"
by the Asian Diver Magazine

TELUK KETAPANG HOMESTAY

Best Homestay by
Malaysia Tourism Award
2017

INSCRIPTION STONE

Memory of the World,
UNESCO 2009

TRADITIONAL PERFORMANCE, MAKYONG

Intangible Cultural
Heritage, UNESCO 2005

SQUID JIGGING

Most Popular Tourism
Activity by Malaysian
Tourism Council Gold
Awards 2019

KEMAMAN ZOO

Outstanding Outdoor
Promotion Campaign,
Malaysia Tourism
Council Gold Awards
(MTCCA) 2021



INVEST TERENGGANU

We always welcome your enquiry.

TERENGGANU STATE ECONOMIC PLANNING UNIT
The Office of the Secretary of the state of Terengganu
12th & 13th Floor, Wisma Darul Iman
20503 Kuala Terengganu, Malaysia

Tel : 09-623 1957 Fax: 09-623 4278
Email : invest.terengganu@gmail.com

