



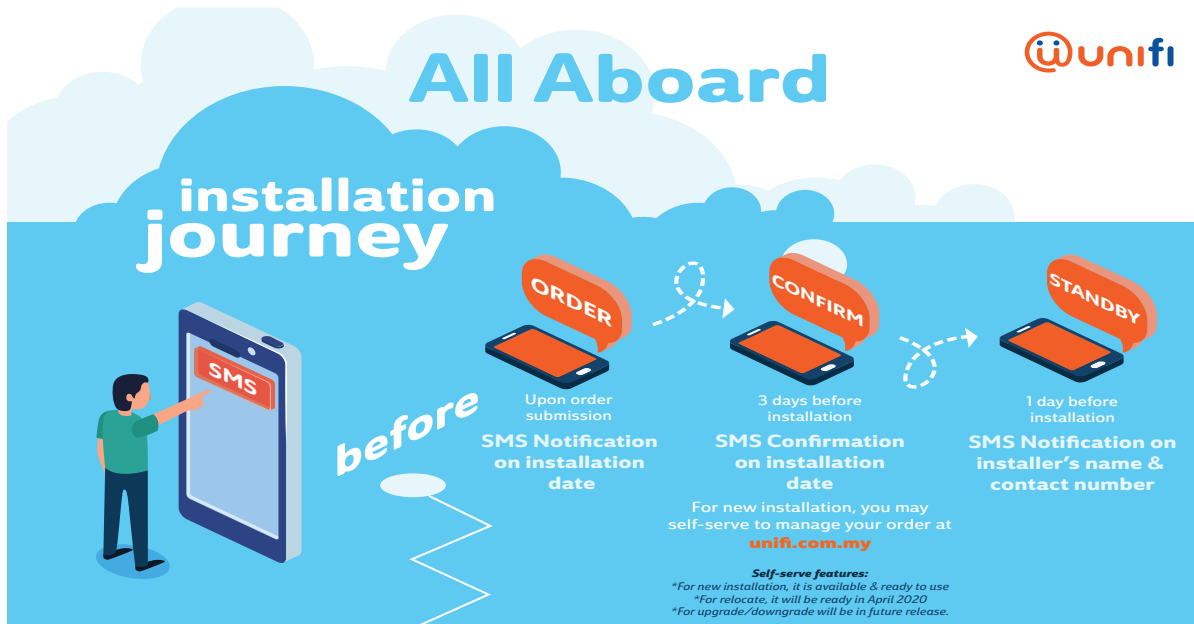

## 电讯收费

### 配套和定价

配套名称为“BIZ”意为该配套专门为企业开发的,相关数字则代表下载速度。UniFi Business提供5种配套,如下表所示:



	UNIFI BIZ 30MBPS	UNIFI BIZ 100MBPS	UNIFI BIZ 300MBPS	UNIFI BIZ 500MBPS	UNIFI BIZ 800MBPS
速度	下载: 30Mbps 上传: 100Mbps	下载: 100Mbps 上传: 50Mbps	下载: 300Mbps 上传: 50Mbps	下载: 500Mbps 上传: 100Mbps	下载: 800Mbps 上传: 200Mbps
配额	无限				
免费语音	每月免费拨打本地和全国电话,费用高达70令吉(16.10美元)。  超出通话费率: • 免费拨打固定电话 • 拨打行动电话每分钟8仙	每月免费拨打本地和全国电话,费用高达30令吉(6.90美元)。  超出通话费率: • 拨打本地电话每分钟4仙 • 拨打固定电话每分钟3仙 • 拨打行动电话每分钟12仙	每月免费拨打本地和全国电话,费用高达50令吉(11.50美元)。  超出通话费率: • 免费拨打固定电话 • 拨打行动电话每分钟12仙	每月免费拨打本地和全国电话,费用高达50令吉(11.50美元)。  超出通话费率: • 免费拨打固定电话 • 拨打行动电话每分钟12仙	每月免费拨打本地和全国电话,费用高达70令吉(16.10美元)。  超出通话费率: • 免费拨打固定电话 • 拨打行动电话每分钟8仙
设备	无线路由器DECT电话				
促销价格(每月)	<b>RM139</b> (31.97美元)	<b>RM139</b> (31.97美元)	<b>RM249</b> (57.27美元)	<b>RM299</b> (68.77美元)	<b>RM349</b> (80.27美元)

可选安装是指免费提供的标准安装范围之外的安装活动。  
有关详细信息, 请造访: <https://unifi.com.my/installation/allaboard.pdf>.

### Installer is On The Way

We'll be calling you on the estimated time of arrival. Please be ready with the below:-

3 power outlets



### Installer is Checking the Premise

We'll be analysing the best cabling route to install unifi with your consent.

Standard Installation	<b>FREE</b>
Optional Installation	Charges may incur
Beyond TM Installation	Appoint own contractor

\*Please refer to **unifi Installation Guide** below



### Installer is Installing the unifi

We will ensure a clean installation, your WiFi coverage is optimised and your devices are configured correctly.

**You can download**



**playtv@unifi**  
to connect to your unifi TV



**myunifi**  
to access to your bills and make payment






### Digital Sign-off

You can sign the acceptance form upon completion (softcopy will be sent via email)



### SMS Feedback

Share your experience with us via SMS. Your valuable feedback will help us craft services you will enjoy.



# UNIFI INSTALLATION GUIDE



## OUTSIDE PREMISE

▶ Where Distribution Point (DP) On-ground



SCENARIO	CATEGORY	RESPONSIBILITY
1 If cable is blocked outside customer's compound	Standard	Provided by TM
2 If cable is blocked within customer's compound	Standard	Provided by TM
2.1 If customer requires installation via surface cabling	Standard	Provided by TM
2.2 If customer requires installation via underground cabling	Beyond TM Scope	Customer to bear the cost

Note:

Materials : GI Pipe, Jubilee Clip, Microduct and Cement.

1. Installation for Scenario 1 is considered as TM standard installation subject to customer private housing policy.
2. Installation for Scenario 2.2 requires customer to appoint own contractor to resolve the blockage.

▶ Where Distribution Point (DP) On Pole



SCENARIO	CATEGORY	RESPONSIBILITY
3 From pole straight to Entry Wall	Standard	Provided by TM
4 From pole to Entry Wall via underground and surface cabling	Optional	Customer to bear the cost

Charges For Scenario 4

CABLING LENGTH	PRICE
4.1 First 10 meter	RM 200
4.2 Each additional 1 meter	RM 10

Note:

Materials : GI Pipe, Jubilee Clip, Microduct, Cement.

TM Installation work scope for scenario 4 comprise of underground cabling for outside customer compound and surface cabling inside customer compound.



# UNIFI INSTALLATION GUIDE



## INSIDE PREMISE

▶ Internal Cabling



SCENARIO	CATEGORY	RESPONSIBILITY
5 Internal cabling first 50 meter	Standard	Provided by TM
Internal cabling more than 50 meter	Optional	Customer to bear the cost

Charges For Scenario 5

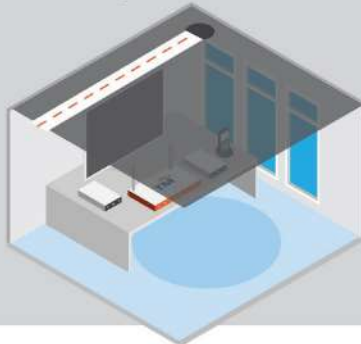
CABLING LENGTH	PRICE
5.1 First 50 meter	FREE
5.2 Each additional 1 meter	RM 5

Note:

Materials : RJ45 and RJ11.

1. Cable length calculation starts from Entry Wall until the furthest Unifi equipment.
2. Raceway (casing) is also provided to protect your cabling up to 30 meter (additional RM5/m)

▶ Inside The Ceiling



SCENARIO	CATEGORY	RESPONSIBILITY
6 Cabling inside the ceiling with micro duct protection	Optional	Customer to bear the cost

Charges For Scenario 6

CABLING LENGTH	PRICE
6.1 First 10 meter	RM60
6.2 Each additional 1 meter	RM 10

Note:

Materials : Cement and Microduct.