



MINISTRY OF HIGHER EDUCATION

PRESENTATION SESSION #5



PUBLIC-PRIVATE RESEARCH NETWORK 2.0 (PPRN 2.0)

Research & Development For Business

By Dr. Wan Nor Aishah Wan Omar
Deputy Undersecretary
Ministry of Higher Education (MOHE)



MINISTRY OF HIGHER EDUCATION

MIDA

[1] INTRODUCTION

Research & Development For Business



MINISTRY OF HIGHER EDUCATION

BACKGROUND



- PPRN is an **innovative initiative** by the Ministry of Higher Education to encourage **demand -based innovation** programmes with the aim to drive and increase the industries' **productivity** and strengthen Malaysian economic development.
- The government provides **matching grants** to support the development of demand-driven innovation projects.

Research & Development for Business



MINISTRY OF HIGHER EDUCATION

OBJECTIVES



- (a) Strengthen public-private networking through Higher Education Institutions (HEI) and Public Research Institution (PRI) by **providing solutions** to the industries;
- (b) Increase productivity through innovations or appropriate technology; and
- (c) Encourage the participation of researchers to provide solutions based on the industry demand.



MINISTRY OF HIGHER EDUCATION

AREAS

MIDA

- Manufacturing
- Agriculture
- Services
- Construction
- Mining and Quarrying





MINISTRY OF HIGHER EDUCATION

Success Story

MIDA

Problem

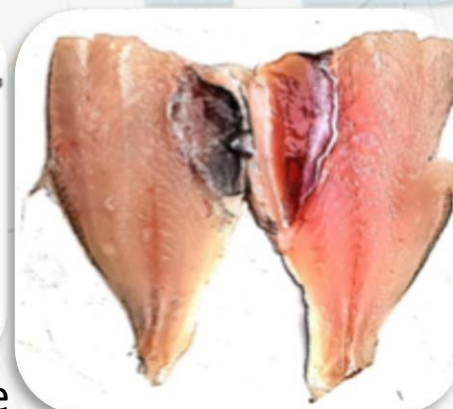
2 workers are needed to process 70 to 100 kg/day fish (3 tonnes/month) at the fish factory. →

Solution

Researchers (UteM) and company (Hasil Laut Paksu) team up to develop an **automatic fish fillet machine** that could process 30 fish/minute. →



Automatic Fish Fillet Machine



Output

*The company's productivity has increased from 3 tonnes to 11 tonnes/month. ↑
*The process is also more hygienic and safe.



MINISTRY OF HIGHER EDUCATION

MIDA

[2] MATCHING GRANTS CONTRIBUTIONS

Research & Development For Business



MINISTRY OF HIGHER EDUCATION

Contributions according to company size



Company Size	Company Contribution	PPRN Contribution	Maximum Grant Amount
Micro	10%	90%	RM50,000.00
Small	30%	70%	RM150,000.00
Medium	50%	50%	RM250,000.00
Large	70%	30%	RM350,000.00



MINISTRY OF HIGHER EDUCATION

MIDA

[3] CRITERIA

Research & Development For Business



MINISTRY OF HIGHER EDUCATION

Companies



(1) Open to all companies and businesses registered with the **Companies Commission of Malaysia (SSM)** while Businesses in Sabah and Sarawak need to be registered with the **Local Authority**.

(2) Annual **sales turnover of more than RM100,000** with proof of the company's latest six (6) months Bank Statement (for Businesses) or audited account (for company) for the last three (3) years.



MINISTRY OF HIGHER EDUCATION

Companies



(3) The company must:

(i) Demonstrate **performance** that the company has been evaluated by any agency or platform such as SME Corporation Malaysia (SME Corp); Perbadanan Usahawan Nasional Berhad (PUNB); Malaysian Technology Development Corporation (MTDC); Standards & Industrial Research Institute of Malaysia (SIRIM); Majlis Amanah Rakyat (MARA); Malaysia Digital Economy Corporation (MDEC); Malaysian Industry-Government Group for High Technology (MIGHT); or other equivalent agencies (**evidence of performance appraisal** should be included); or

(ii) Be in the category of competitive and viable companies.



MINISTRY OF HIGHER EDUCATION

Companies



(4) The company must have a business **premise registered** with the local authority or an Incubator Center registered with the agency;

(5) Majority **ownership of Malaysian** citizens (ie $\geq 51\%$) (need to submit Form 24 for companies incorporated under the Companies Act 1965 OR SSM Certification Certificate containing Director Information and Shareholder Information for companies incorporated under the Companies Act 2016);

(6) The Company must be in **operation** for at least **one (1) year**;



MINISTRY OF HIGHER EDUCATION

Companies



(7) Products or services to be improved or added value under the PPRN initiative must be **on the market** or offered for at least **one year**;

(8) Companies that have received PPRN funds **must wait for one (1) year** from the existing PPRN funds received to expire before making a new application; and

(9) HEI/PRI spin off/start-up companies cannot collaborate with researchers from the same HEI/PRI.



MINISTRY OF HIGHER EDUCATION

Researchers



- (1) Applications are **open to all** HEIs and PRI researchers;
- (2) The head researcher is a **permanent or full -time contract employee** (for private HEIs), while the researcher can be a permanent or contract employee in HEIs and PRI;
- (3) The period of **service** for the lead researcher shall be **at least 24 months** remaining from the date the project commences;
- (4) The lead researcher must be a Malaysian citizen;



MINISTRY OF HIGHER EDUCATION

Researchers



- (5) The researchers must have **expertise, skills or knowledge** in the project applied for;
- (6) The lead researcher is **not** on study leave/*sabbatical*/ continuing studies/industrial training or its equivalent;
- (7) Researchers may **only lead one** (1) project or **be a member for one (1)** project at a time. A special application must be made to the MOHE for the approval of the PPRN Technical Evaluation Committee if the researcher wishes to lead or be a member of more than one (1) project at a time;



MINISTRY OF HIGHER EDUCATION

Researchers



(8) Researchers who lead or are members of a project that is still in implementation are not allowed to apply for a new project **until the project status letter** is issued by the MOHE;

(9) The researcher does **not have any conflict of interest** in the company; and

(10) Researchers who have been **blacklisted before cannot apply** for PPRN projects until the suspension period ends.



MINISTRY OF HIGHER EDUCATION

Guidelines & Forms



<https://www.mohe.gov.my/muat-turun/awam/manual-dan-garis-panduan/772-garis-panduan-pprn-februari-2021>

<https://www.mohe.gov.my/muat-turun/awam/borang-1/773-borang-permohonan-pprn-2-0-feb-2021>



MINISTRY OF HIGHER EDUCATION



THANK YOU

Contact Details:

**PPRN Secretariat, Research and PPRN Section,
Policy Planning and Research Division,
Ministry of Higher Education Malaysia**

Phone : 03-8870 6875 / 5110 / 5096 /5095 /4343

Email : pprn.kpt@mohe.gov.my