

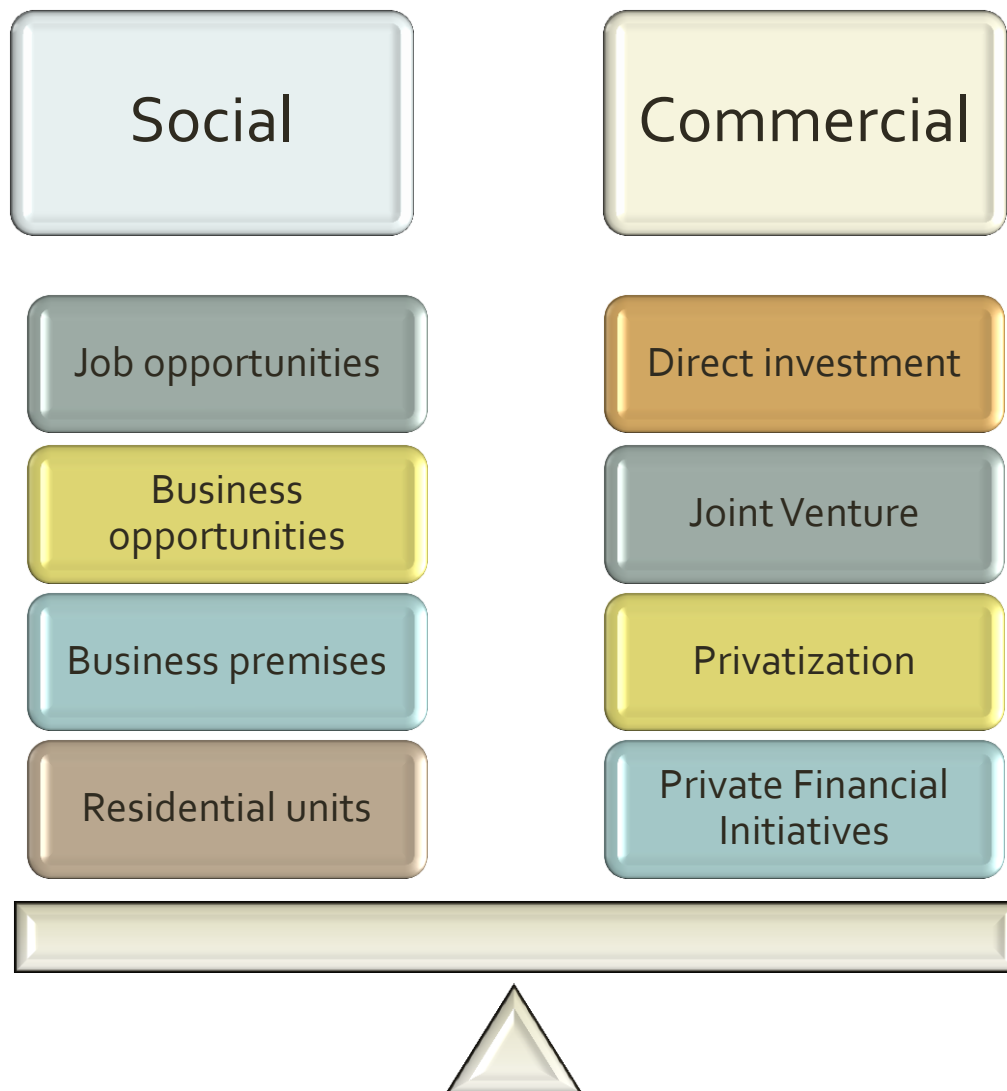


INVESTMENT OPPORTUNITIES IN KELANTAN



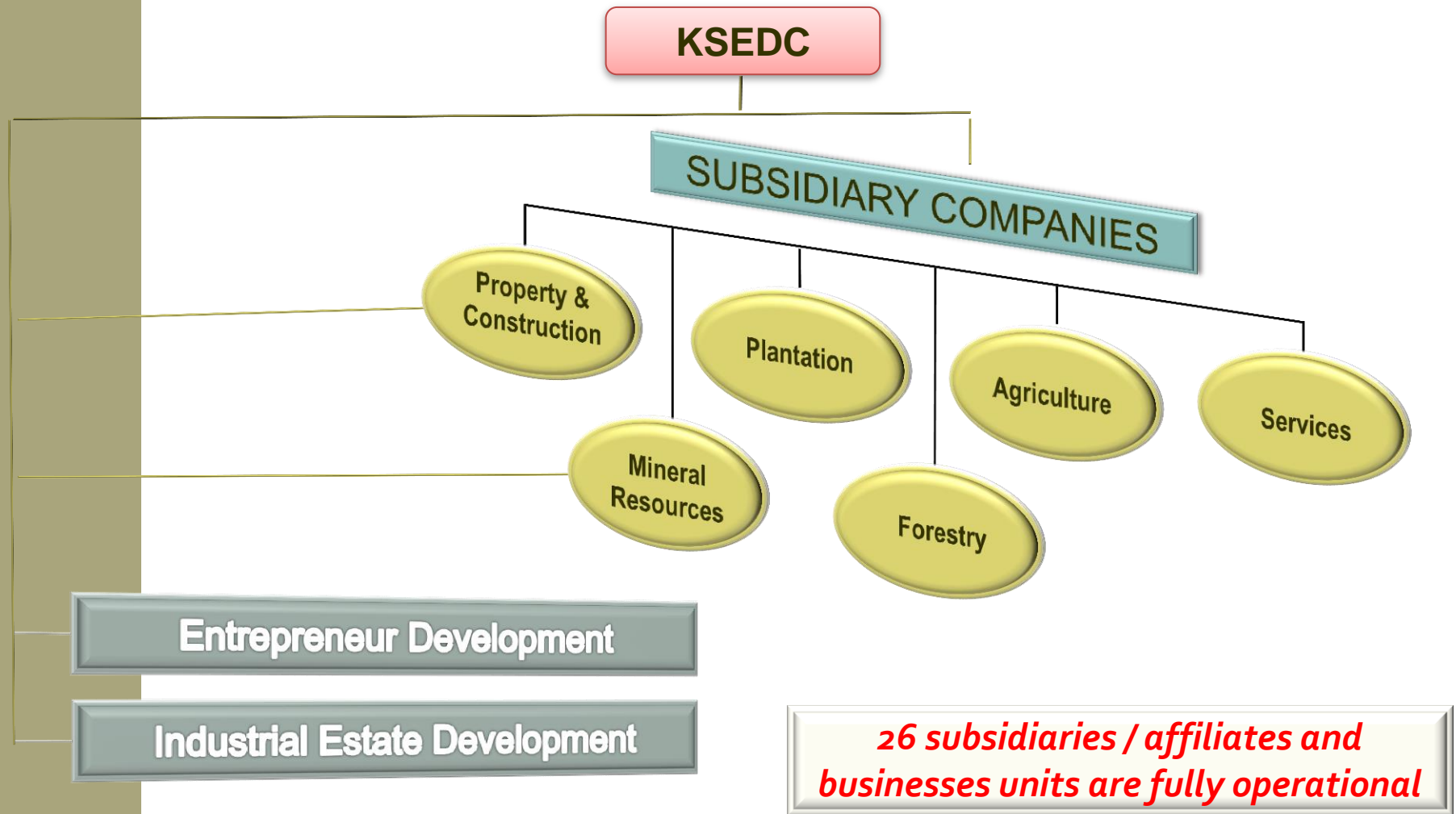


KSEDC ROLE



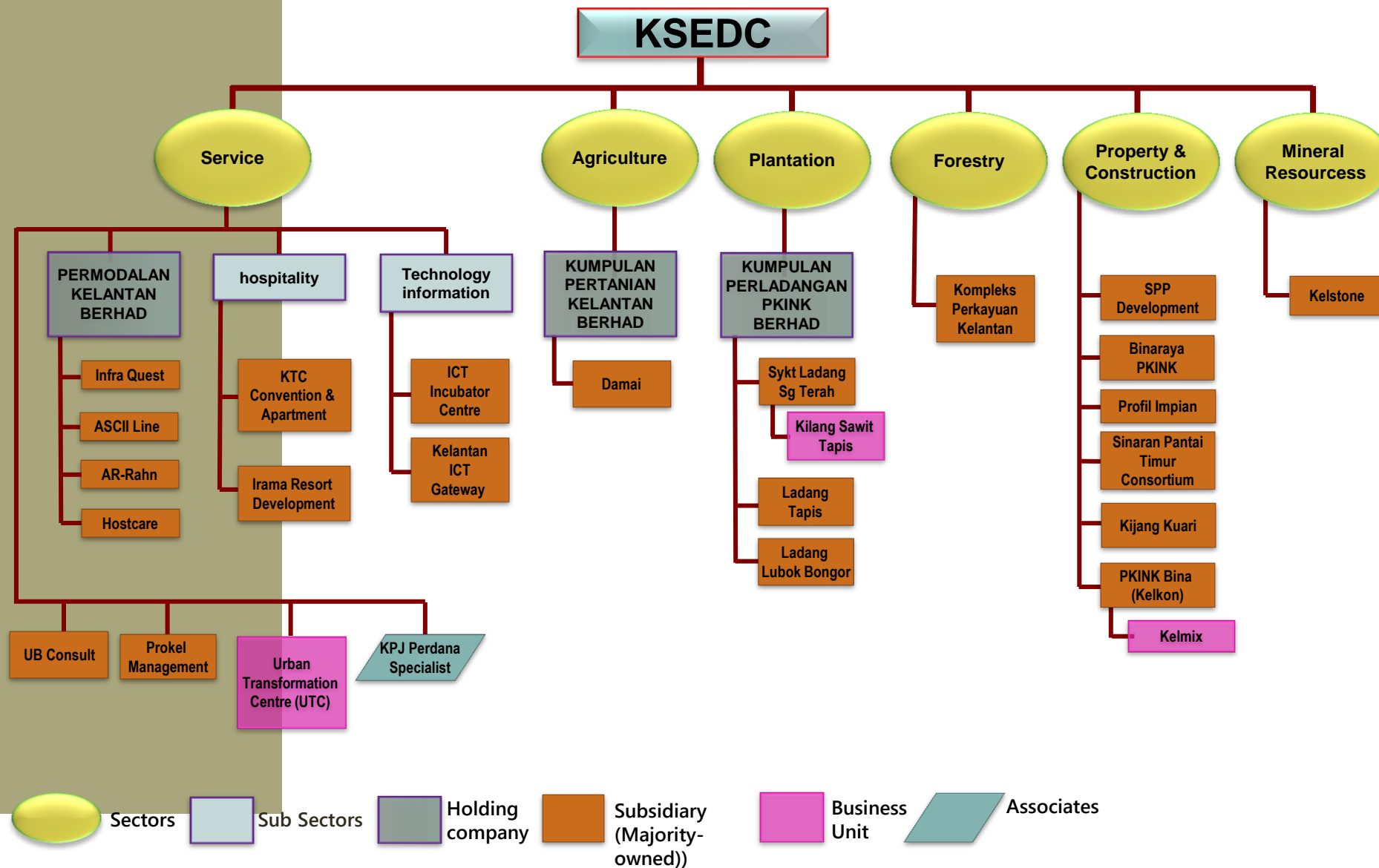


GROUP ACTIVITIES



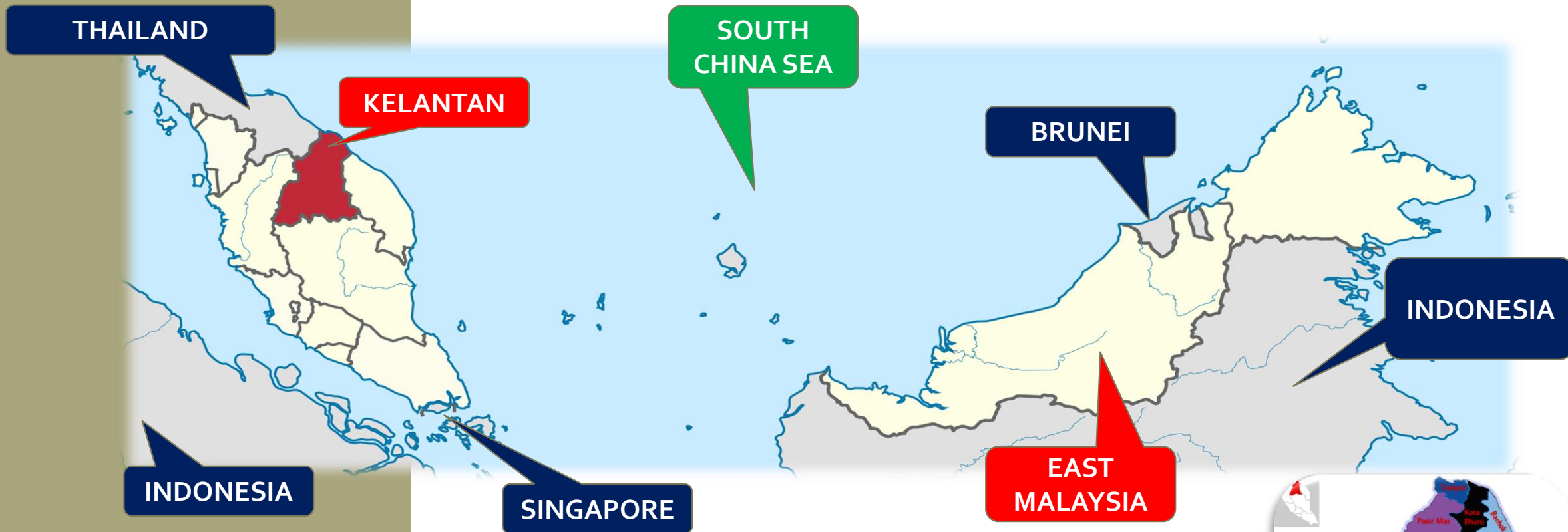


CORPORATE STRUCTURE



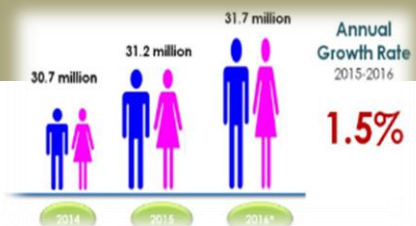


KELANTAN @ A GLANCE



Area

- 14,922 kilometer square
- 1.5 million hectare



Population (2016)

- Malaysia - 31.7 million
- Kelantan – 1.76 million





QUICK INFO -KELANTAN



CAPITAL	KOTA BHARU
NUMBER OF DISTRICT	10 DISTRICTS
LANGUAGE	MALAY , ENGLISH
CURRENCY	MALAYSIAN RINGGIT (MYR) (1 USD = 3.9 MYR)
LABOUR FORCE ('000)	637.7 (2014)
UNEMPLOYMENT RATE (%)	3.6 (2015)



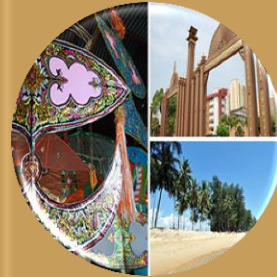
KOTA BHARU - THE ISLAMIC CITY IN MALAYSIA





ECONOMIC INDICATORS

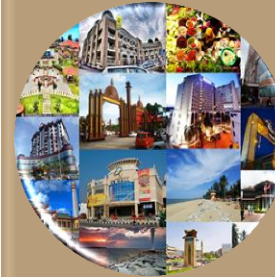
MALAYSIA - GDP
2014 RM1.01 Trillion
2015 RM 1.06 Trillion
2016 RM1.11 Trillion



**GDP
KELANTAN**



**2014
RM 19.1
bilion**



**2015
RM19.7
bilion**

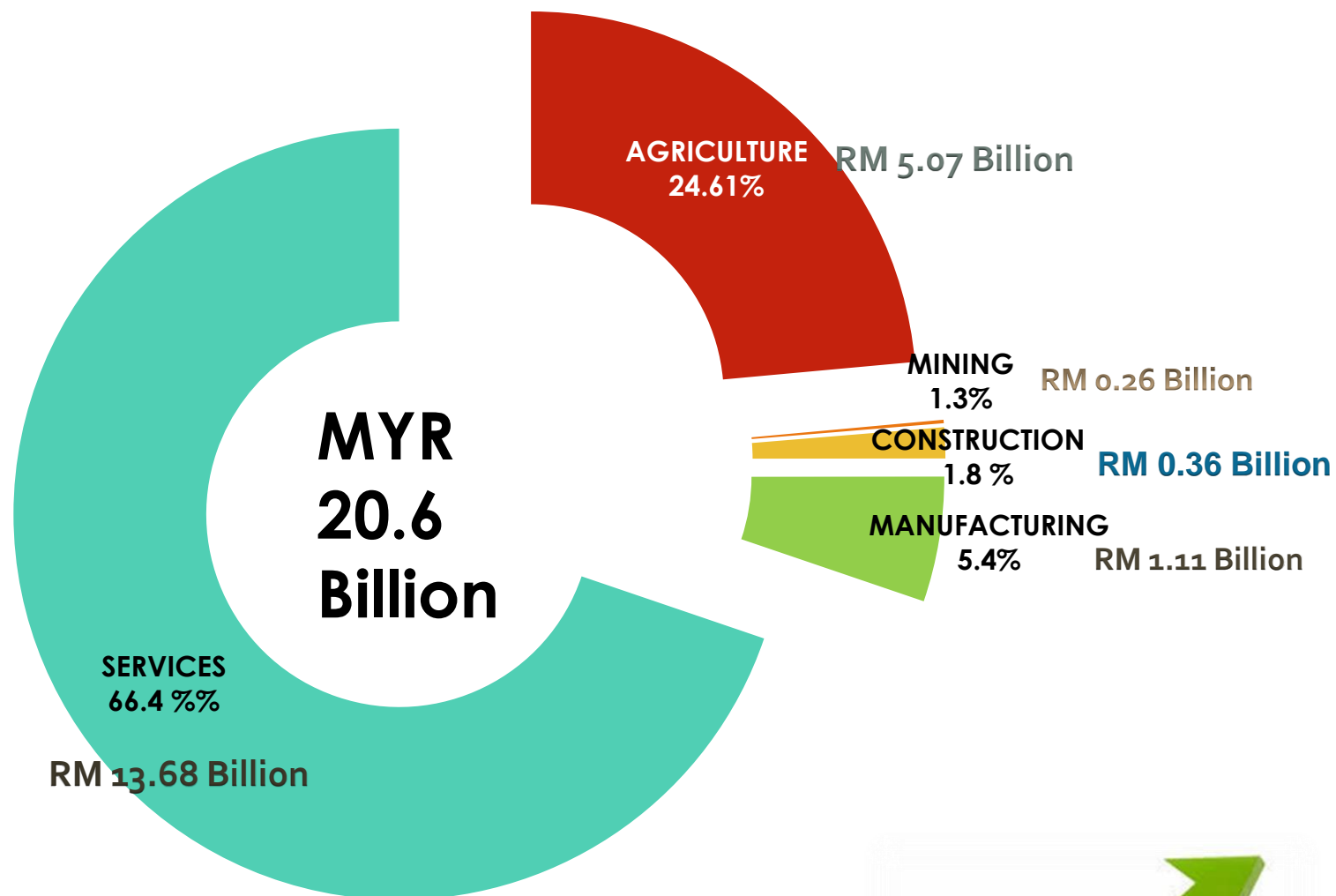


**2016
RM20.65
bilion**





GROSS DOMESTIC PRODUCT BY SECTOR (2015)





BACKGROUND DETAILS

Kelantan – Moving Forward’ is a new phase in the state’s administration for 25 years in line with the state’s policy ‘Developing With Islam

The strategic plan for ‘Kelantan Moving Forward’ upholds three (3) main pillars :

- (i) Blessing
- (ii) Prosperity
- (iii) Welfare

The strategic plan is to be implemented in two (2) phases ;

- (i) Phase 1 :
2015 – 2020 (Year)
- (ii) Phase 2:
2020 – 2025 (Year)



3 MAIN PILLARS AND 10 CORES

PILLAR 1 : BLESSING

- RELIGIOUS AND SPIRITUAL DEVELOPMENT
- PUBLIC ADMINISTRATION
- EDUCATION & HUMAN DEVELOPMENT

PILLAR 2: PROSPERITY

- FINANCIAL STRENGTHENING
- SOCIAL ECONOMIC DEVELOPMENT
- ECONOMY & INVESTMENT
- INFRASTRUCTURE & PHYSICAL DEVELOPMENT

PILLAR 3 : WELFARE

- PUBLIC HEALTH & HYGIENE
- SOCIAL WELFARE
- MUNICIPAL SERVICES

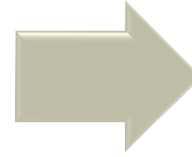


PILLAR 2 : PROSPERITY

ECONOMY & INVESTMENT

TARGET

- Increase in State' GDP
- To develop industrial sector as one of state's main economic contributor
- Branding Kelantan as the country's main Halal Hub



STRATEGY

- Focusing on main economical contributing sectors such as as: services, agriculture and manufacturing
- Optimizing available industrial parks as well as opening more potential sites
- Developing cottage industries for mining sector
- Further enhancing existing halal park and create new halal parks in each district
- Focusing on the production and marketing of local halal products
- Strengthening agricultural and biotechnology industry
- Expanding existing poultry industry

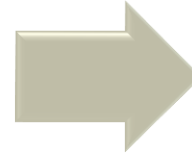


PILLAR 2 : PROSPERITY

ECONOMY & INVESTMENT

TARGET

- Branding Kelantan as the country's focal tourism destination
- Developing Kelantan as a conducive investment destination



STRATEGY

- Improving existing facilities in current tourism sites and creating new tourism destinations
- Developing Kelantan as Islamic Tourism destination
- Improving current facilities to be more appealing towards investors



WHY MUST INVEST IN KELANTAN ?



GOVERNMENT SUPPORT

- Investment Facilitation
- Incentives On Land Lease Period



STRATEGIC LOCATION

- Sharing border with Thailand and access to South East Asia Countries



MULTICULTURAL AND MULTILINGUAL POPULATION

- English is widely used in Malaysia and also in Kelantan



SKILLED WORKFORCE & COMPARATIVE SALARIES

- Harmonious industrial relation with minimal trade disputes



MAIN INVESTMENT OPPORTUNITIES IN KEY SECTORS

TOURISM

- Hospitality services – Hotels, Resorts, Lodges, Inns
- Cultural centre
- Leisure & Sports facilities – Theme Parks, Golf courses

MANUFACTURING

- Food Processing / Production
- Distribution centre

INFRASTRUCTURE

- Roads / Highway
- Public Housing & Property Development
- Port



PASIR MAS HALAL PARK



PHASE 1 (50 ACRES)

- Developed and operating
- Comprises of Entrepreneur Business Complex (EBC), warehouse and industrial lots

PHASE 2 (58 ACRES)

- Under construction
- Comprises of logistics hub, commercial zone, Collection Processing and Packaging Center (CPPC) and industrial lots



LAYOUT PLAN OF PASIR MAS HALAL PARK

PHASE 1

LAYOUT PLAN



LOT NO	ACREAGE	STATUS
5A	1.21	Available
5D	1.26	Koperasi Penawar Kelantan Berhad
5B	1.28	Available
5E	1.36	Available
5C	2.85	Chengal Jati Food Industries
5F		
6A	3.07	MH Mohd Industries
6D		
6C	2.94	Rangkaian Iltizam
6F		
6B	1.48	Available
6E	1.46	Tean Siong

Legend

- | | | | |
|--|---|--|--------------|
| | Reserve for potential investor | | Logistic Hub |
| | Land available for potential investor | | EBC |
| | Land allocated for commercial dev. Under ECERDC | | |



QUICK FACTS - PASIR MAS HALAL PARK

ITEM	DESCRIPTION
Industry Focus	Food & beverages (F&B), Ingredients Snack, Spices & Sauce Halal food-based products, Nutraceuticals / herbs Agriculture-based products, Meat-based products
Location	Pasir Mas, Kelantan
Total Area	Phase 1: 20.23 hectares / 50 acres (Current)Phase 2: 23.47 hectares / 58 acres (Future Planning)
Available Area / Lot	12.49 hectares / 30.87 acres
Land Origin	State Economic Development Council
Lease Period	66 years
Accessibility	•Kota Bahru town : 21 km •Kota Bahru Airport : 22 km •Kuala Lumpur city : 455 km
Infrastructure Development Status	Infrastructure is ready

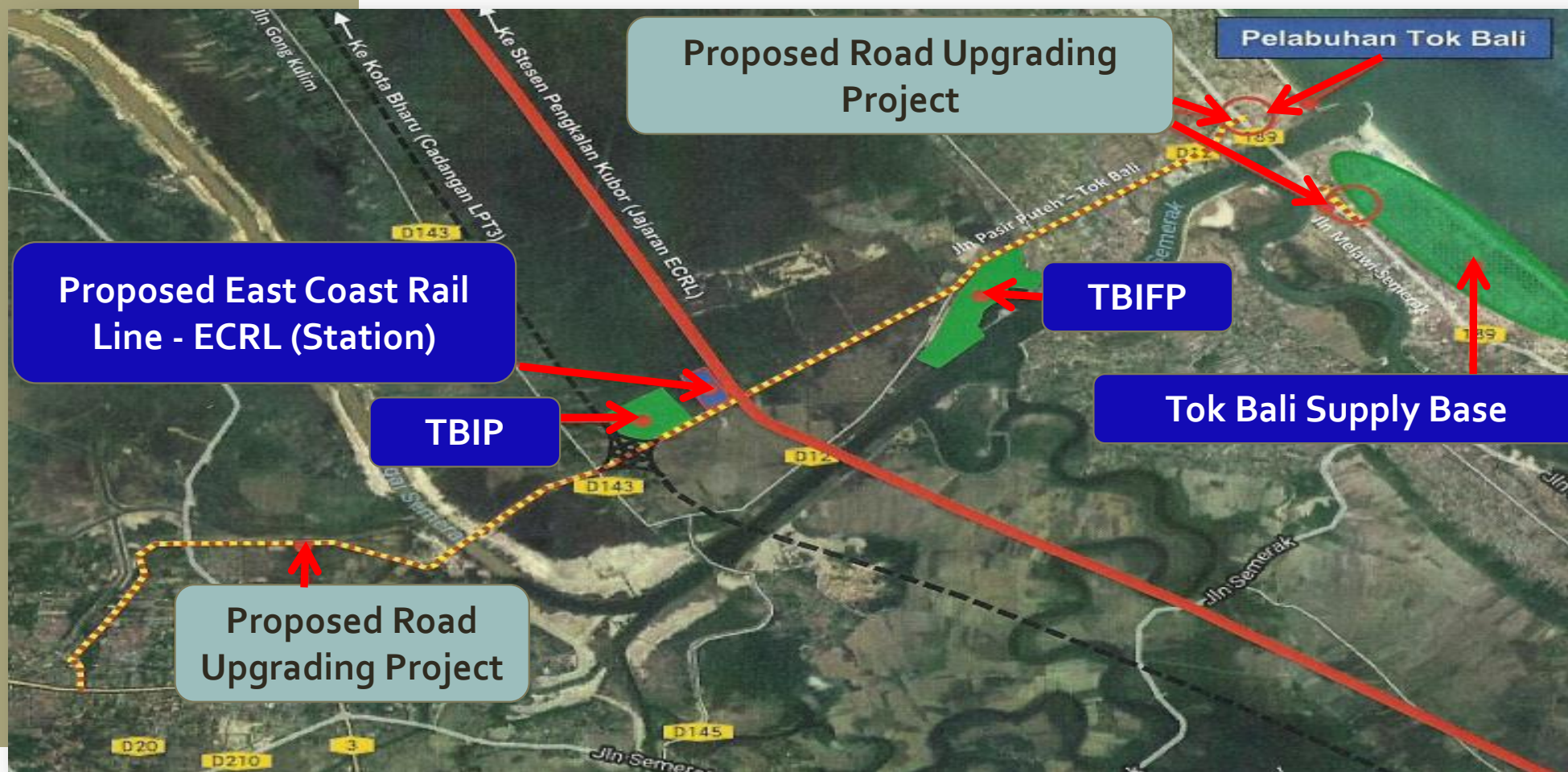


TOK BALI DEVELOPMENT AREA

Total Development Area



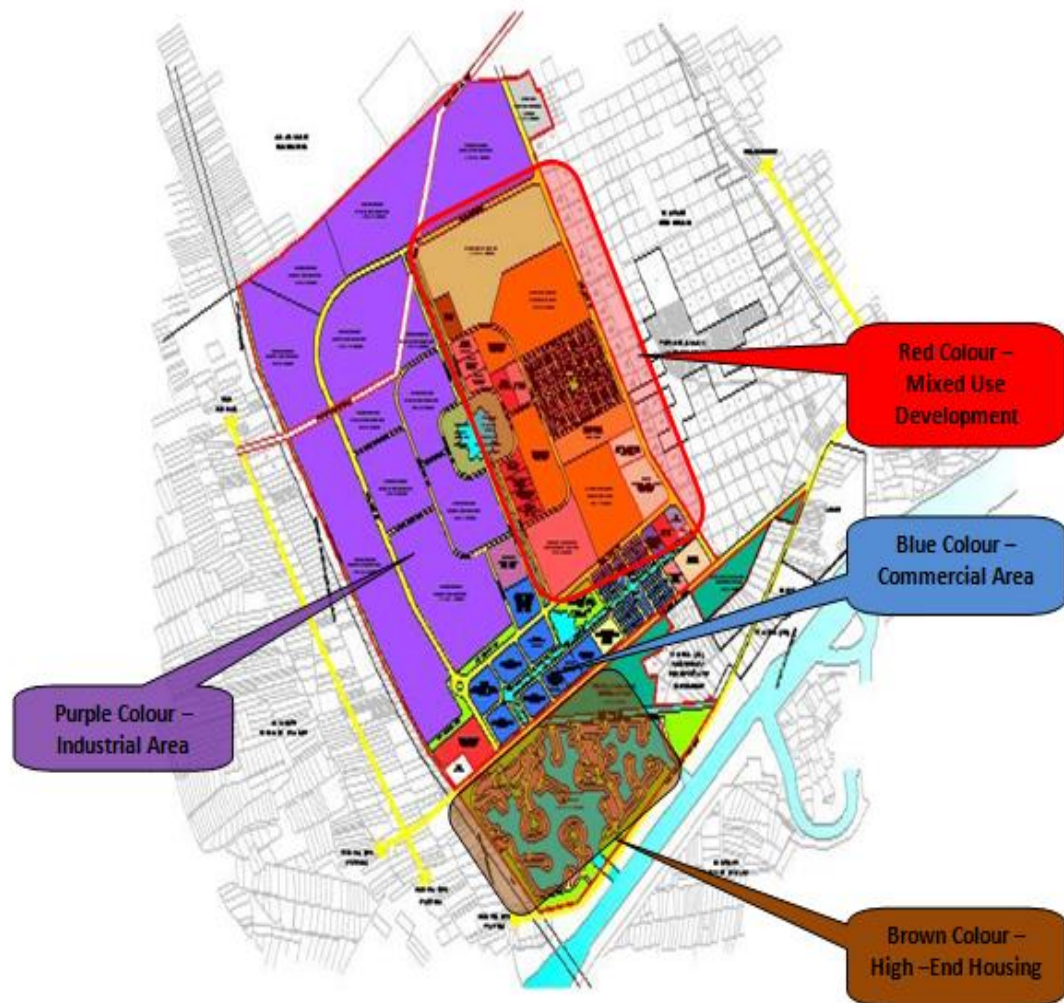
2600 acres of land



TBIFP – Tok Bali Integrated Fisheries Park
TBIP - Tok Bali Industrial Park



TOK BALI INDUSTRIAL PARK (TBIP)



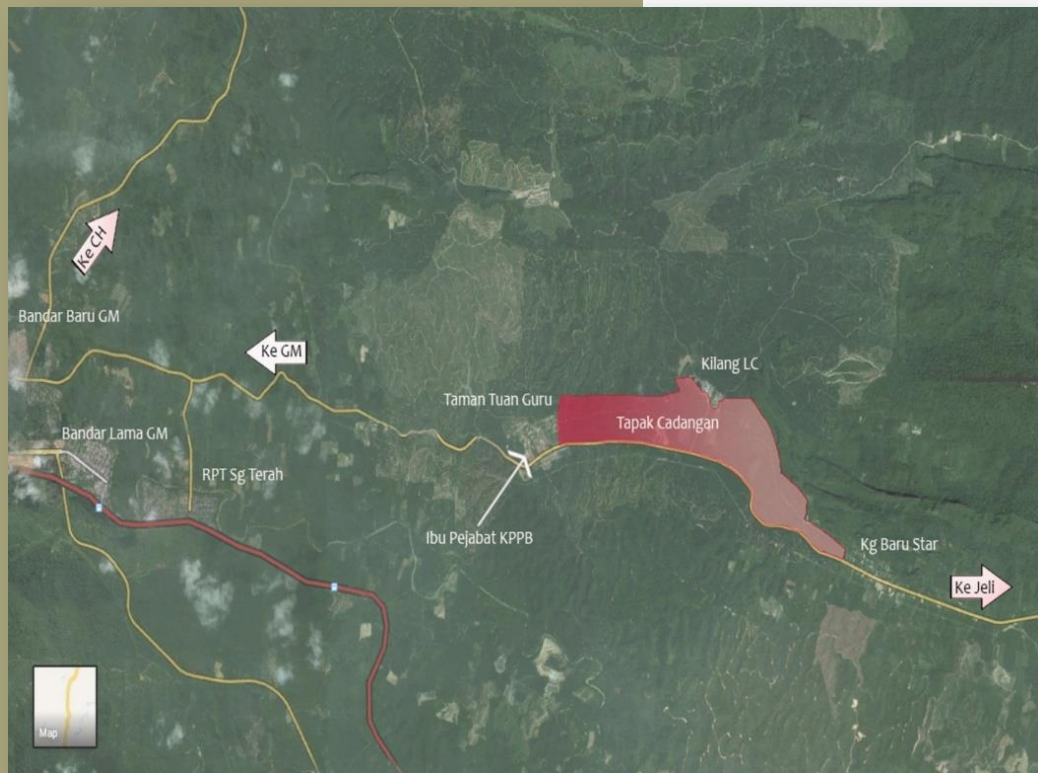
Proposed Activities For Industrial Park:

- Heavy Industry (Oil & Gas)
- Small and Medium Industry Including Halal

Location	Tok Bali Pasir Puteh, Kelantan
Total Area	200 acres
Land Origin	East Coast Economic Region Development Council (ECERDC)
Lease Period	66 years
Accessibility	•Kota Bahru town : 42 km •Kota Bahru Airport : 50 km
Infrastructure Development Status	Under land acquisition process.



SUNGAITERAH MODERN ISLAMIC CITY



commercial area



town area

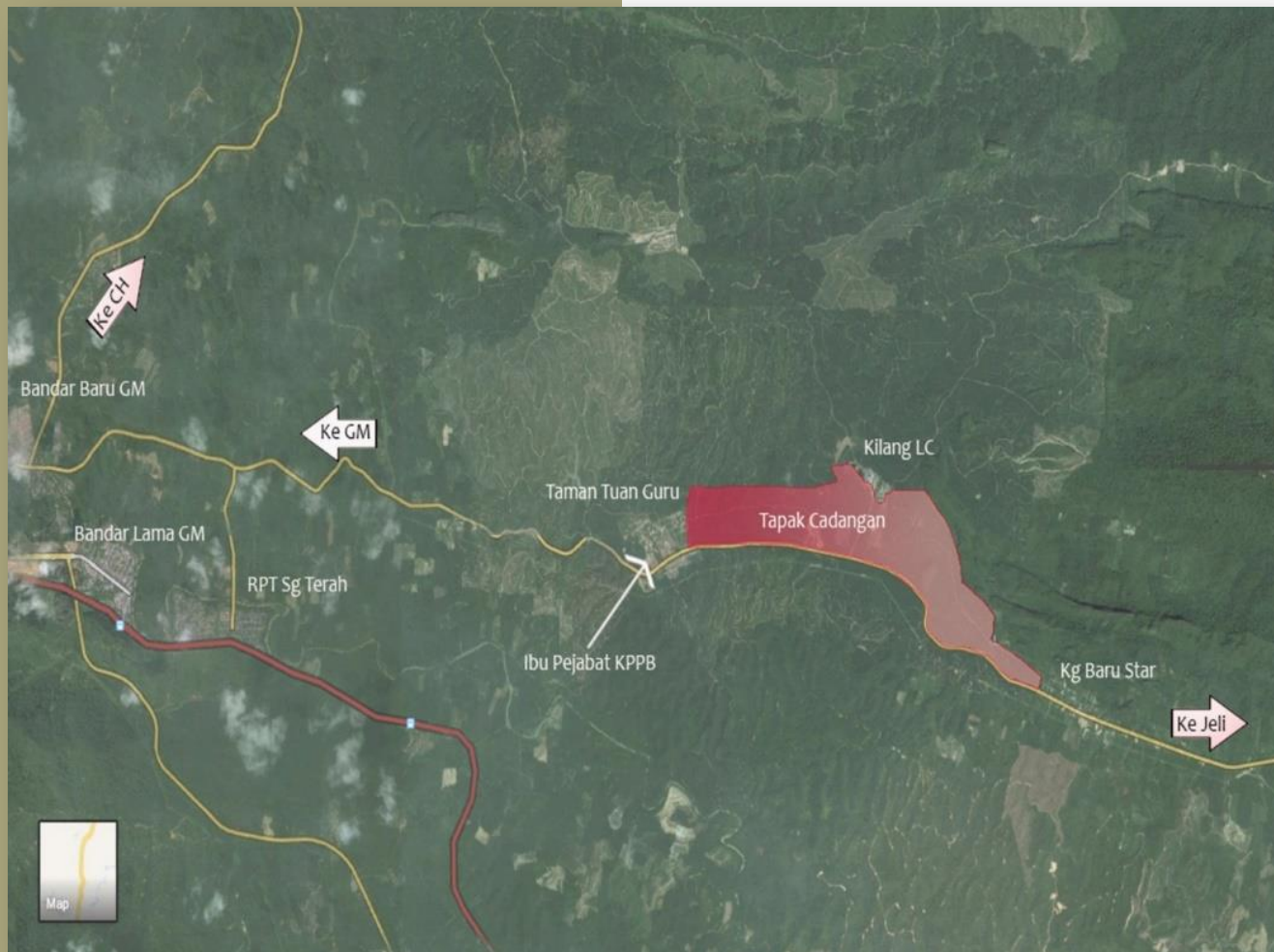


factory





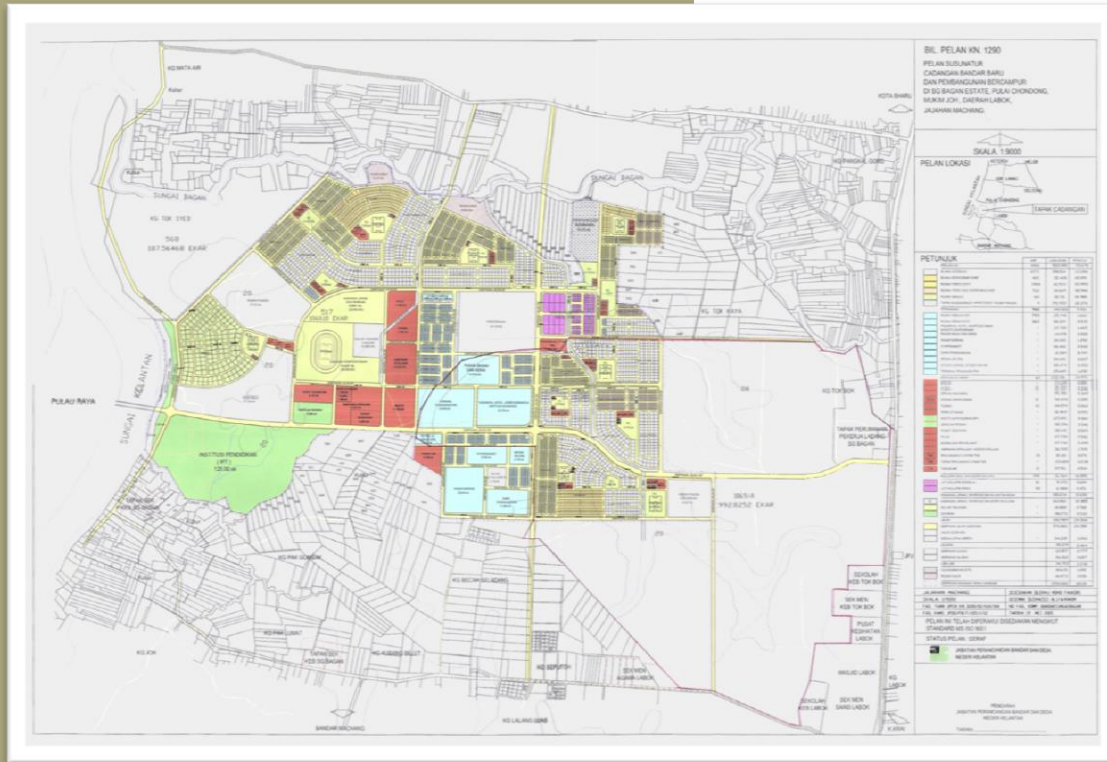
SUNGAITERAH MODERN ISLAMIC CITY



- Proposed investment for mix development & industrial estate as a modern Islamic city
- This development plan located in Ladang Sungai Terah, Gua Musang District, Kelantan Darul Naim with area 900 acres. Location distances to nearby township are as follow : -
 - a) 8 km from Gua Musang Town
 - b) 65 km from Kuala Krai
 - c) 170 km from Kota Bharu City Centre
 - d) 174 km from Sultan Ismail Petra Airport
 - e) Flat & hilly area
 - f) Adjacent to Central Spline Road
 - g) 122 km from Cameron Highland
 - h) 32 km from Taman Negara



NEW TOWN AND MIX-USED DEVELOPMENT IN SG. BAGAN ESTATE, PULAI CHONDONG, DISTRICT OF MACHANG



commercial area



town area

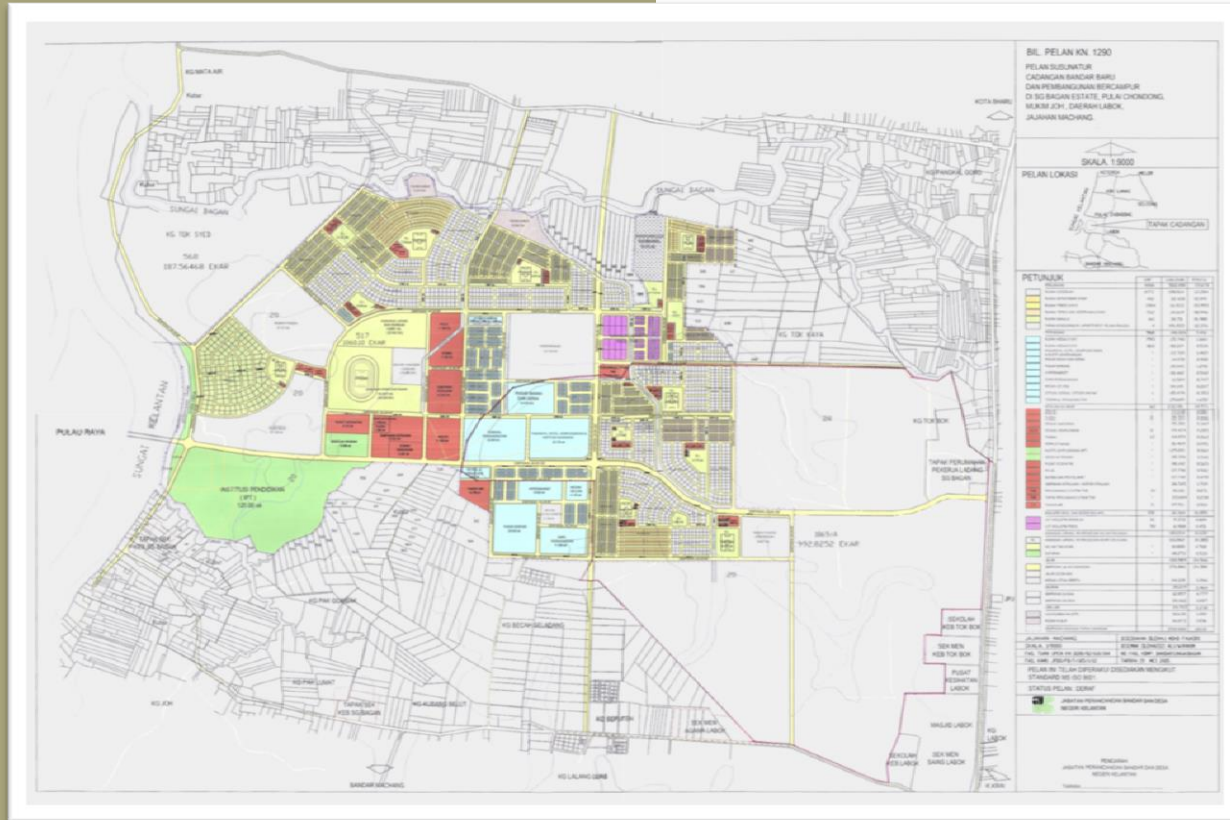


factory





NEW TOWN AND MIX-USED DEVELOPMENT IN SG. BAGAN ESTATE, PULAI CHONDONG, DISTRICT OF MACHANG

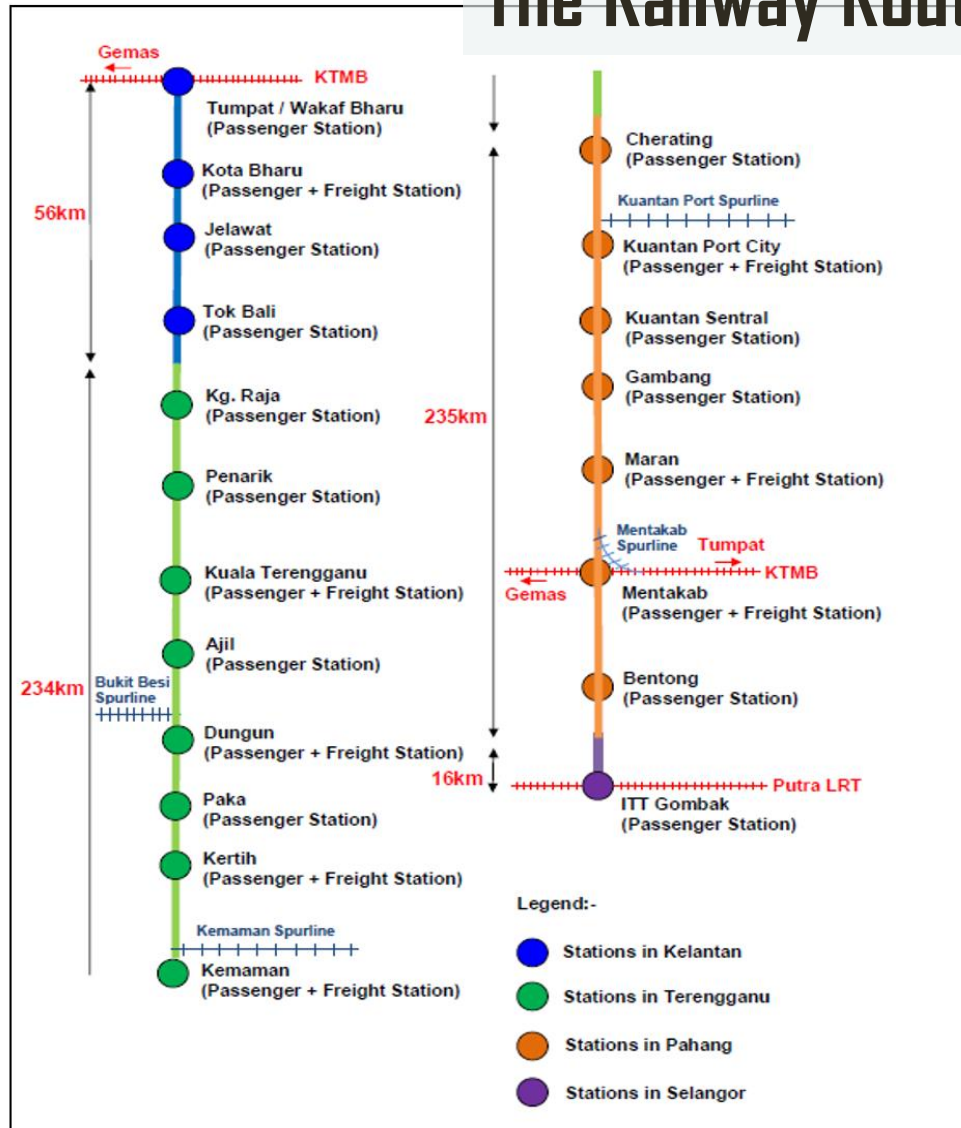


- Proposed investment for mix development which includes airport city & state government administration centre
- This development plan located in Ladang Sungai Bagan, Machang District with area of 2000 acres. Location distances to nearby township are as follow : -
 - a) 8 km from Machang Town
 - b) 37 km from Kota Bharu City Centre
 - c) 151 km from Gua Musang Town
 - d) 29 km from Pasir Putih Town
 - e) 50 km from Sultan Ismail Petra Airport
 - f) Flat area
 - g) Adjacent to Central Spine Road



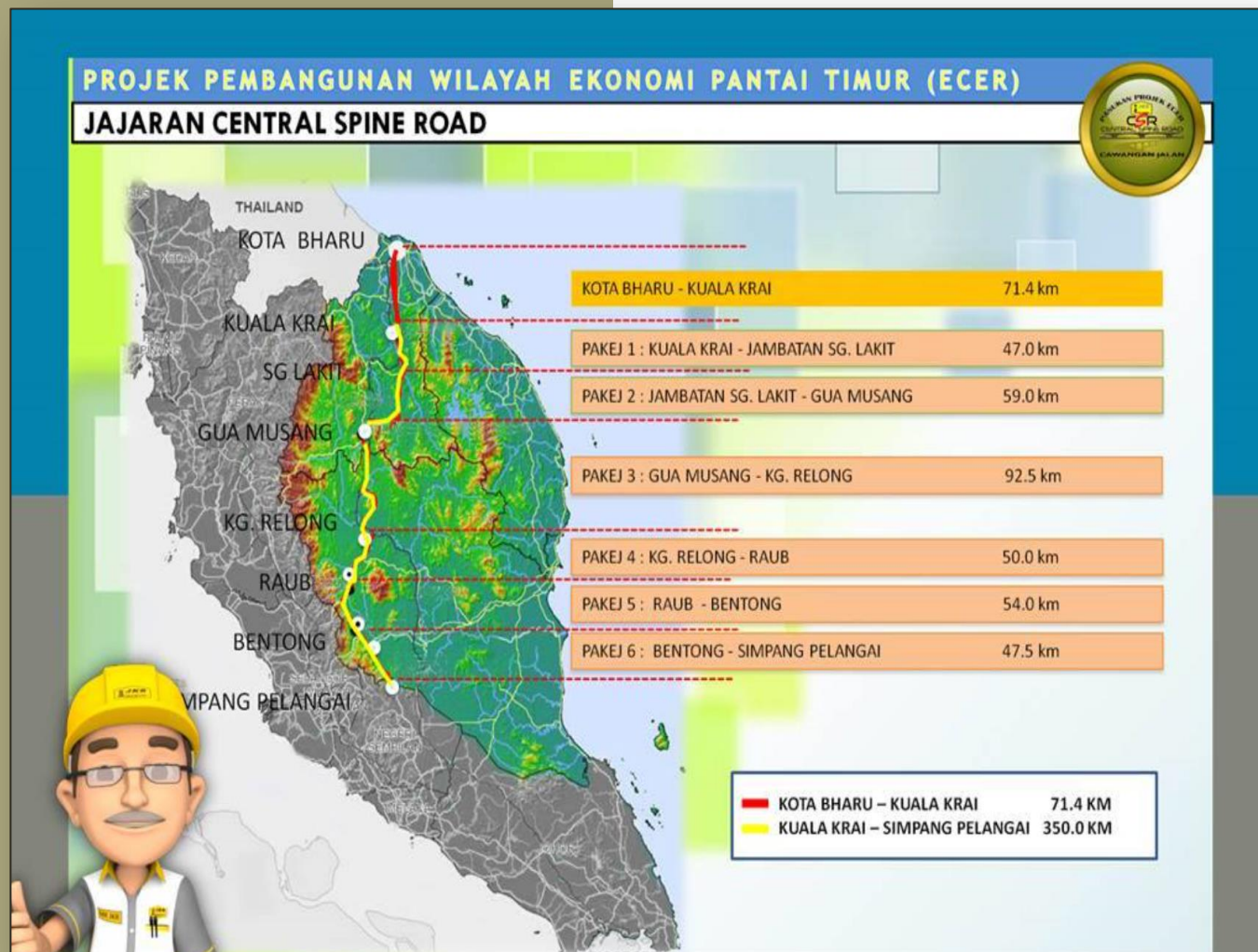
INFRASTRUCTURE: EAST COAST RAILWAY LINK (ECRL)

The Railway Route





INFRASTRUCTURE: CENTRAL SPINE ROAD



- Central Spine Road or Kuala Krai–Kuala Pilah Highway, is a new 325 km highway under construction
- Connecting to The Kota Bharu–Kuala Krai Expressway of 73 kilometre



INFRASTRUCTURE: SULTAN ISMAIL PETRA AIRPORT








- Prime Minister announcement RM450 million for upgrading work under The **Eleventh Malaysian Plan**

Airlines ◆	Destinations
AirAsia	Kota Kinabalu, Kuala Lumpur–International, Kuching
Firefly	Kuala Lumpur–Subang, Penang
Malaysia Airlines	Kuala Lumpur–International
Malindo Air	Kuala Lumpur–International, Kuala Lumpur–Subang



**Busiest Flights Out of Sultan Ismail Petra Airport by Weekly Frequency
May 2016**

Rank ◆	Destinations ◆	Frequency (Weekly) ◆	Airlines ◆
1	 Kuala Lumpur (KLIA)	129	AK, MH, OD
2	 Selangor (Subang)	141	FY, OD
3	 Penang	14	FY
4	 Sabah, Kota Kinabalu	3	AK
5	 Sarawak, Kuching	3	AK



DESTINATION FOR CULTURAL & ECOTOURISM IN MALAYSIA



- Diverse of Cultural Activities - Cradle of Malay Culture
- Numbers of nature attractions - white sandy beaches, waterfalls, tropical forests
- Home of tastiest and authentic local cuisine





JOM CLICK KELANTAN



KALASHop

Jom Click Kelantan



www.kalashop.my



THANK YOU