



# AN UPDATE ON INVESTMENT OPPORTUNITIES IN KEDAH

**BRIDGING INVESTORS - BUILDING OPPORTUNITIES**

# Table of Contents



**About Kedah**



**Business Environment**



**Investment Promotion**



**Talented Human Resources**



**Kedah Investment Holistic**



**Upcoming & Potential**



**Success Story of KHTP**



**Q & A Session**

# Table of Contents



About Kedah



Upcoming & Potential



Business Environment



Success Story of KHTP



Investment Promotion



Q & A Session



Talented Human Resources

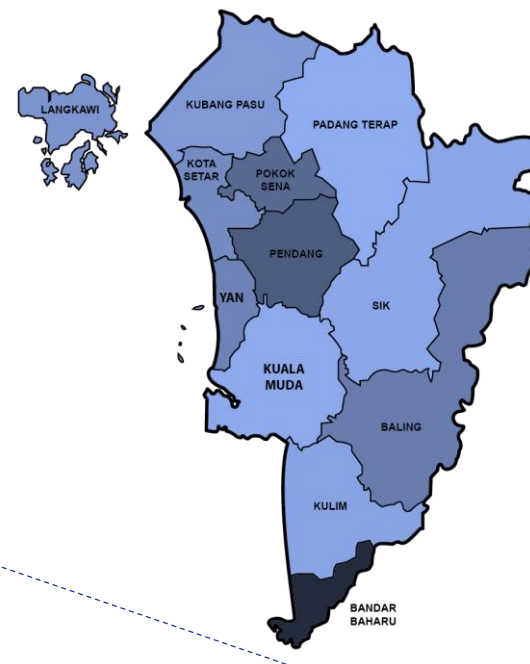


Kedah Investment Holistic

# ABOUT KEDAH - KEY FIGURES



***"Rice bowl of Malaysia"***



**AREA :**  
9,426 sq km



**CAPITAL :**  
Alor Setar



**GDP:**  
RM37,170 M  
(2016)



**GDP GROWTH:**  
3.2 %  
(2016)



**Districts :**  
**12**



**POPULATION**  
2.1 million



**FDI:**  
RM24 billion  
2008-2016



**CLIMATE:**  
Tropical  
Monsoon

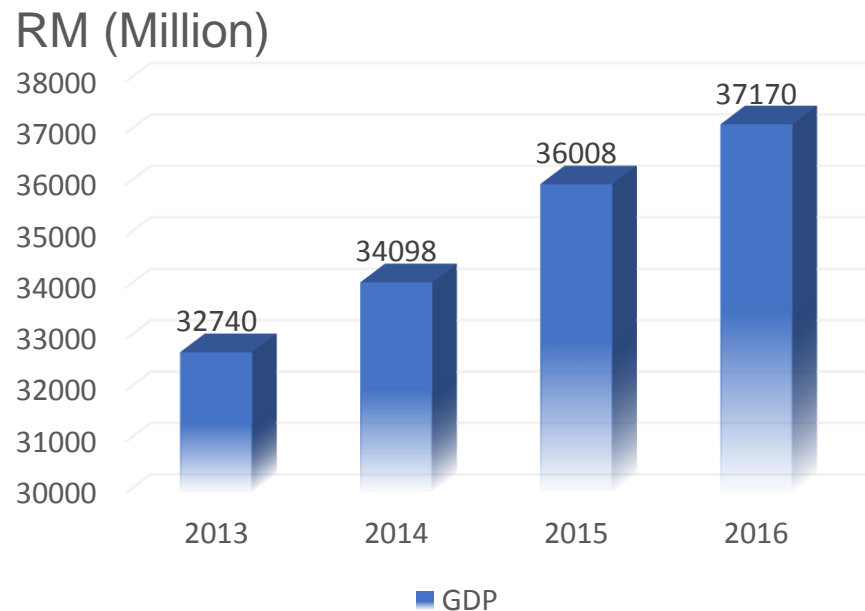


# ABOUT KEDAH

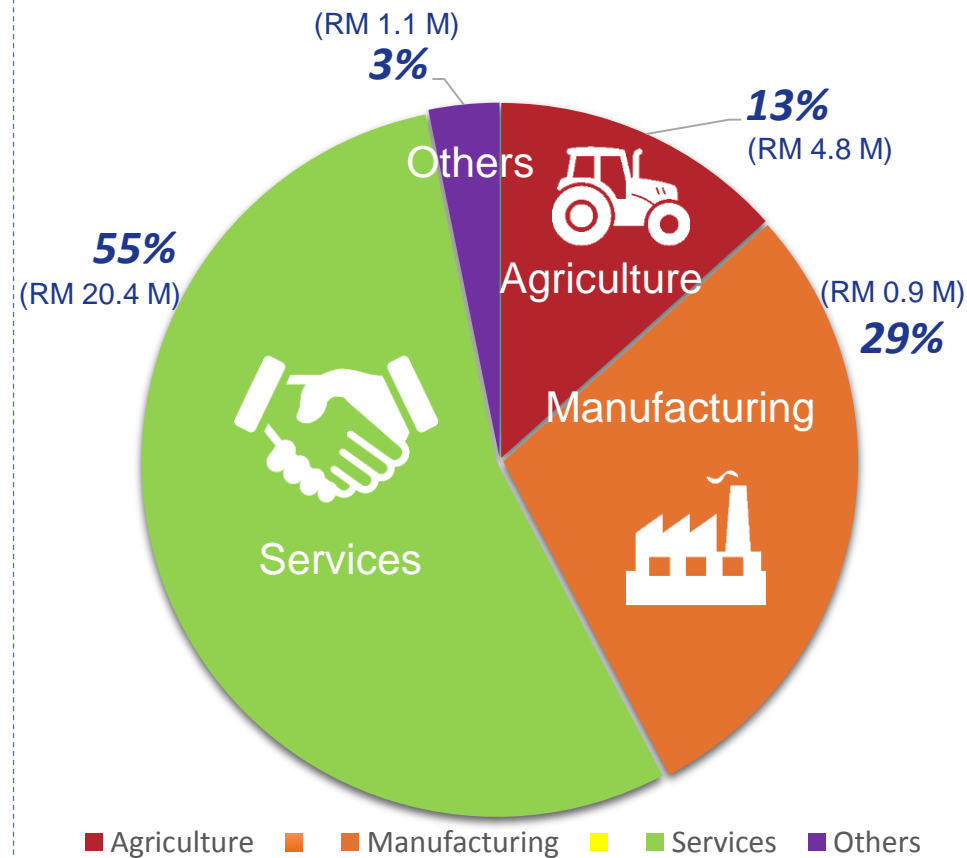
## – GROSS DOMESTIC PRODUCTS (GDP)



By Year  
2013-2016



Contribution by Sector (2016)



# ABOUT KEDAH - LOGISTICS NETWORK



## Roads



- **State road**  
7,880.942 Km
- **Federal road**  
1,157.049 Km

## Expressway

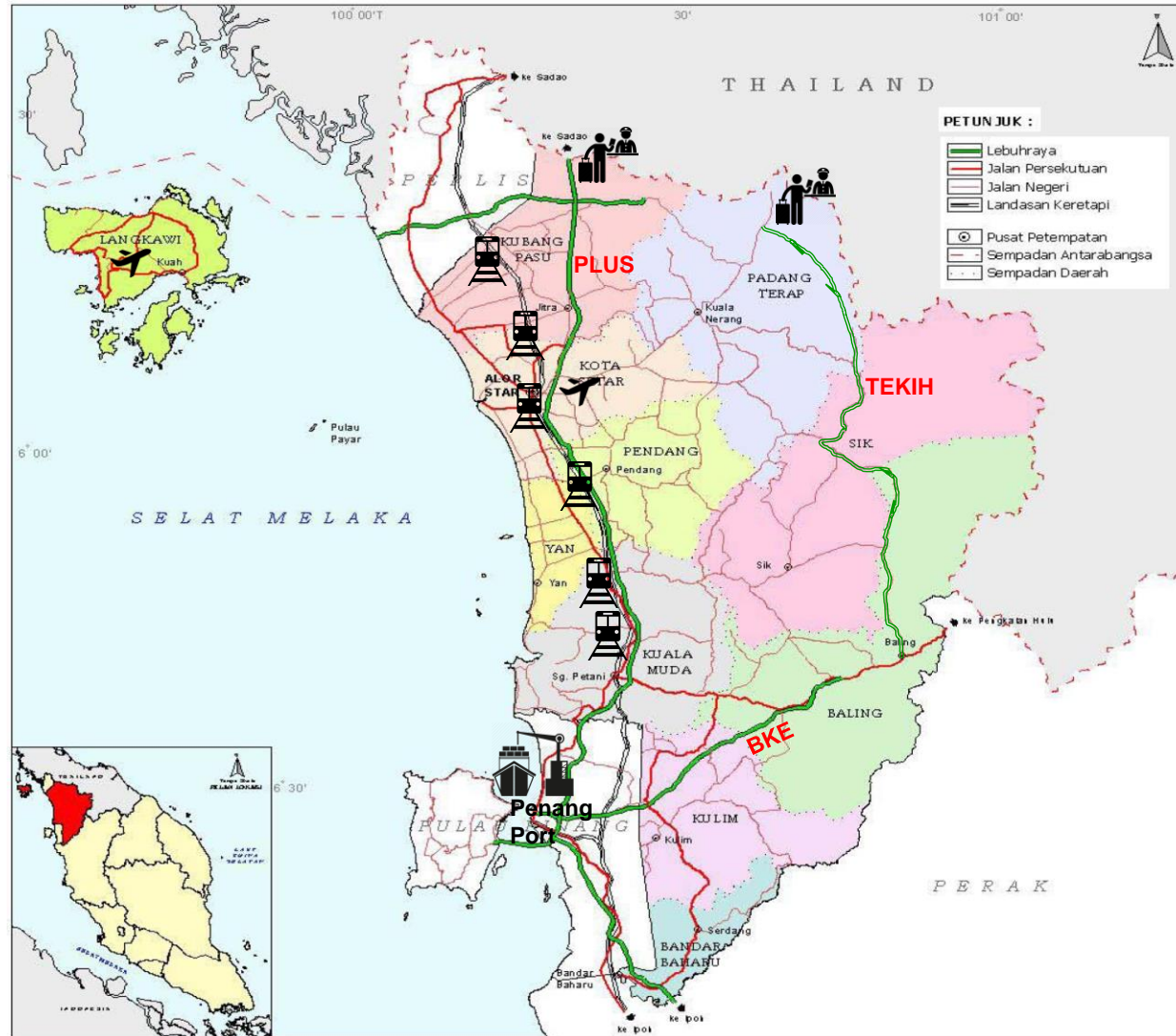


- **Length:**  
293 km (PLUS)  
32 km (BKE)  
74 km (TEKIH)  
24 km (Perlis-Changlun)

## Rail



- 6 ETS stations in Kedah linked from Padang Besar to Gemas
- 4 hours (Alor Setar – KL Sentral)



# ABOUT KEDAH - UTILITIES



## RELIABLE UTILITIES

A reliable utilities system is in place to ensure uninterrupted supply of electricity, clean high speed internet access.



### Electricity

Stable & uninterrupted electricity



### Water

Clean & ample water supply



### Telecommunication

High speed internet access



# Table of Contents



About Kedah



Upcoming & Potential



Business Environment



Success Story of KHTP



Investment Promotion



Q & A Session



Talented Human Resources



Kedah Investment Holistic

# PROJECTS APPROVED IN KEDAH



## 2016

RANK	No. of Project	Employment	Domestic	FDI	TOTAL
<b>6 / 14</b> state	<b>35</b>	<b>2,428</b>	<b>RM 615 Million</b>	<b>RM 1.5 Billion</b>	<b>RM 2.1 Billion</b>

## 2017 (Jan-Sept)

RANK	No. of Project	Employment	Domestic	FDI	TOTAL
<b>6 / 14</b> state	<b>26</b>	<b>1,543</b>	<b>RM 864 Million</b>	<b>RM 424 Million</b>	<b>RM 1.2 Billion</b>

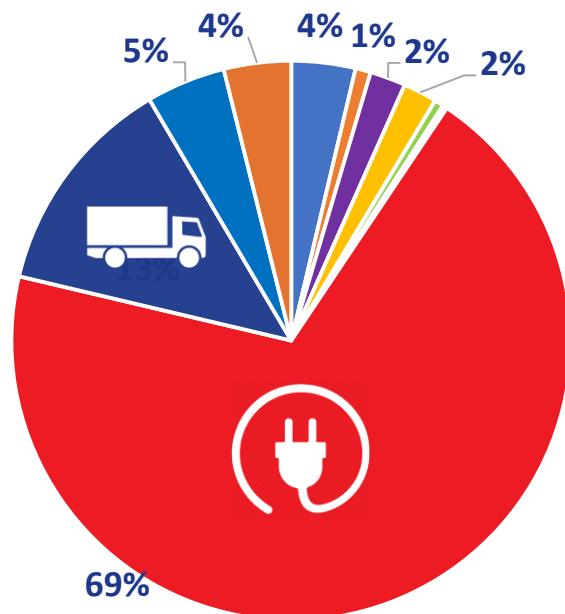
Source : **MIDA**



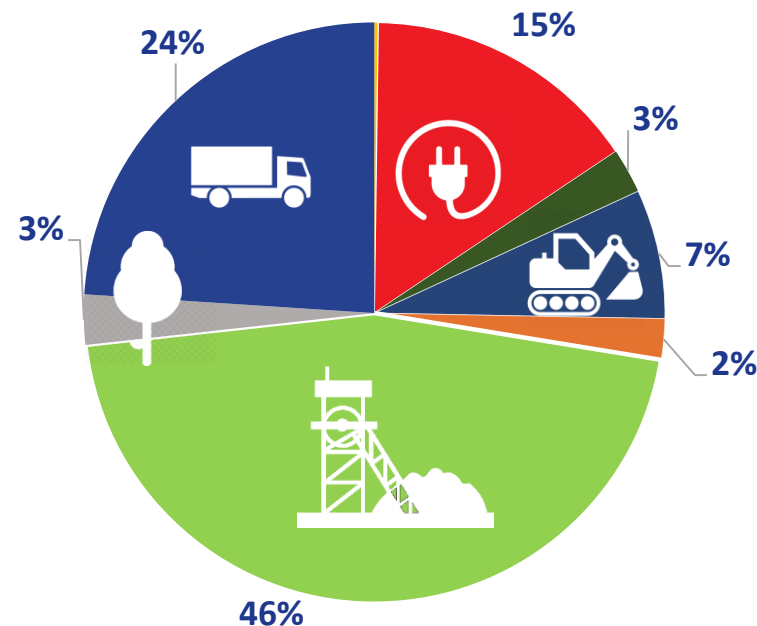
# PROJECTS APPROVED BY MAJOR INDUSTRIES IN KEDAH,



(2016)



(2017)

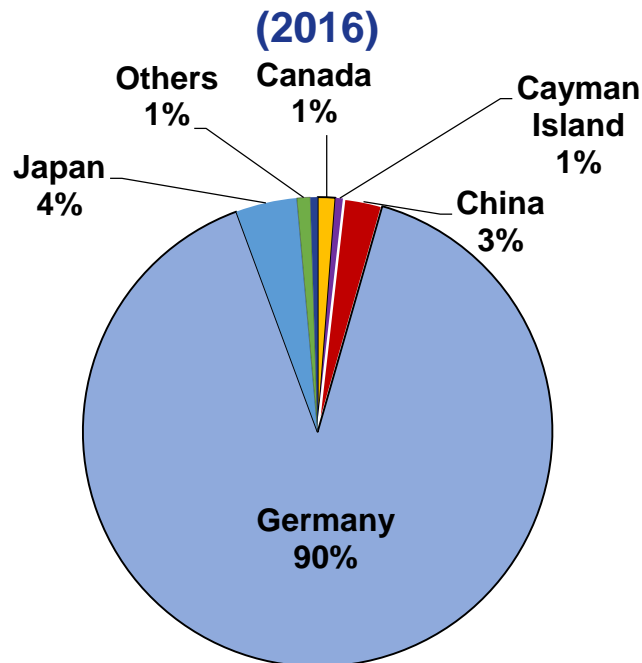


- Food Manufacturing
- Wood & Wood Products
- Non-Metallic Mineral Products
- Machinery & Equipment
- Transport Equipment
- Miscellaneous
- Leather & Leather Products
- Chemical & Chemical Products
- Fabricated Metal Products
- Electronics & Electrical Products
- Scientific & Measuring Equipment

- Chemical & Chemical Products
- Electronics & Electrical Products
- Fabricated Metal Products
- Machinery & Equipment
- Miscellaneous
- Non-Metallic Mineral Products
- Rubber Products
- Transport Equipment



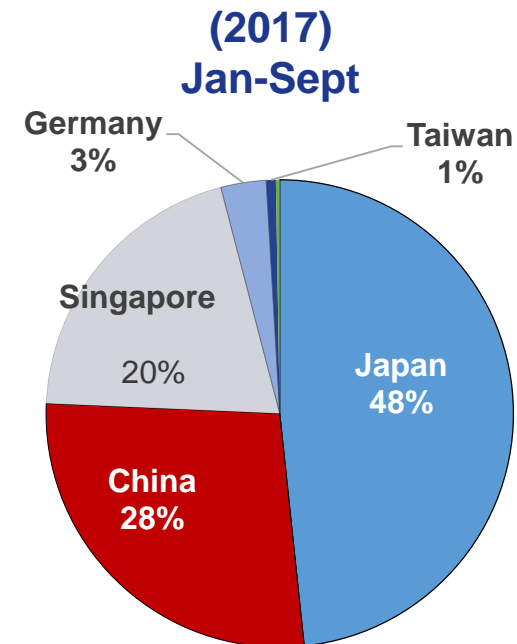
# PROJECTS APPROVED BY MAJOR COUNTRIES



**Total : RM 1.15 B**

Country	Investment (RM)
Canada	19 Million
Cayman Island	9.2 Million
China	41 Million
Germany	1.4 Billion
Japan	66 Million

Country	Investment (RM)
Singapore	1.2 Million
Taiwan	7.8 Million
United States	6.2 Million
Others	1.2 Million



**Total : RM 425 M**

Country	Investment (RM)
China	116 Million
Germany	13 Million
Japan	205 Million
Singapore	86 Million
Taiwan	2.8 Million
Others	1.1 Million

Source : **MIDA**

# Table of Contents



About Kedah



Upcoming & Potential



Business Environment



Success Story of KHTP



Investment Promotion



Q&A Q & A Session



Talented Human Resources



Kedah Investment Holistic

# ADVANTAGES OF INVESTING IN KEDAH



**WE OFFER**



**COST-EFFECTIVENESS**



**FAST APPROVAL**



**POLITICAL &  
ECONOMIC STABILITY**



**SWIFT CONNECTIVITY**



**RELIABLE UTILITIES**



**QUALITY TRAINABLE  
WORKFORCE**



**BUSINESS INCENTIVES**

# PROMOTED ACTIVITIES



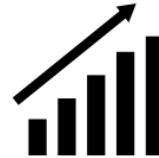
# INCENTIVES



Kedah enjoys incentives that provided by MIDA. Major incentives are as follows:



**Pioneer Status (PS)**



**Reinvestment Allowance (RA) or Round Incentives**



**Investment Tax Allowance (ITA)**



**Exemption Import Duty & Sales Tax (Machinery & Equipment) & Import Duty for Raw Materials / Components**



**Less Develop Area (LDA) – On case basis**

We also offer:



**Attractive land price**

**Reduction of land premium (Subject to approval by State Authority Council)**

# Table of Contents



About Kedah



Upcoming & Potential



Business Environment



Success Story of KHTP



Investment Promotion



Q & A Session



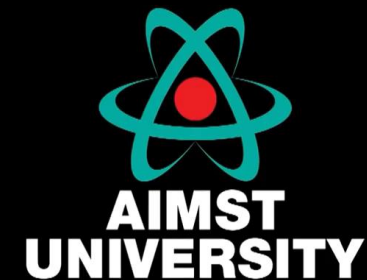
Talented Human Resources



Kedah Investment Holistic



# HIGHER LEARNING INSTITUTIONS IN KEDAH



## FAST FACTS

- 547** - Primary school
- 201** - Secondary school
- >38** - Universities, Colleges, Training Institutions & International Schools

# HUMAN RESOURCES - Vocational Education



- Well-trained and skilful human capital.
- Constant supply of high performing workforce
- Industries oriented
- There are skill and management institutions to provide auxiliary skills and management education to the workforce so that workers are kept abreast of new development in the specifics areas of specialisation.



## **Kedah Industrial Skills and Management Development Centre**

Trains and develops human resources either in collaboration with companies operating in Kedah or in areas that require development or upgrading of competencies.

# Table of Contents



About Kedah



Upcoming & Potential



Business Environment



Success Story of KHTP



Investment Promotion



Q & A Session



Talented Human Resources

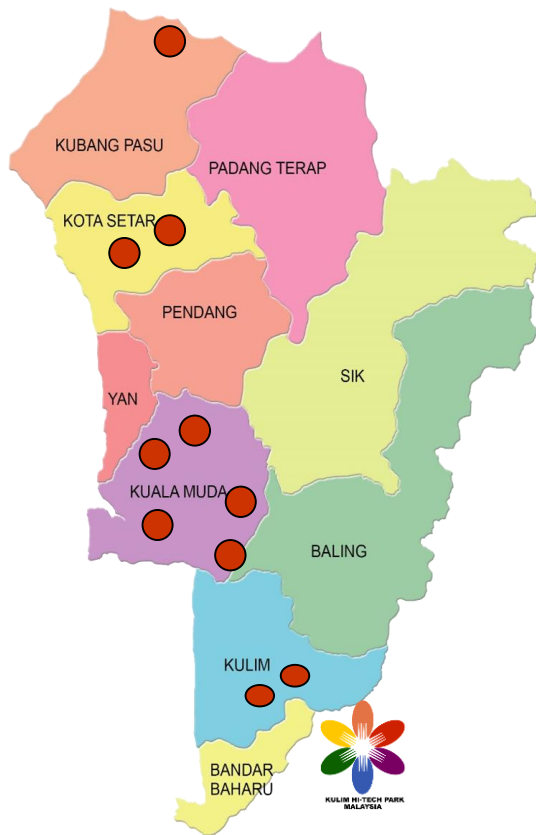


Kedah Investment Holistic

# EXISTING INDUSTRIAL PARKS



## LOCATION OF INDUSTRIAL PARKS



NO	AREA	YEAR STARTED	MAJOR TYPE OF INDUSTRY	DEVELOP AREA ( ACRES)
1.	Kulim	1978	E&E, rubber based products, plastic, textile, automotive component	430.16
2.	Sungai Petani	1989	Food packaging, E&E, 'plastic injection and moulding', textile, farmaseutikal, medical equipment	622.31
3.	Bakar Arang	1980	Timber, Pharmaceuticals, E&E, health products, automotive components	558.28
4.	Tikam Batu	1975	Timber, Automotive Components, Electric & Electronic.	89.10
5.	Mergong II	1980	SME (Food & Beverages, rubber based products, Pharmaceuticals)	102.30
6.	Mergong Barrage	1988	Automotive Spare part, E&E, Concrete products	100.49
7.	Kuala Ketil	1994	Steel fabrication, medical devices, rubber based products, timber & E&E.	348.58
8.	Bukit kayu Hitam	1995	Automotive components, Logistics & Storage	338.88
9.	Gurun	2003	Automotive Industry	379.81
10.	Kulim Hi-Tech Park	1992	Hi-Tech Industry	4,510.00
Total				7,479.91

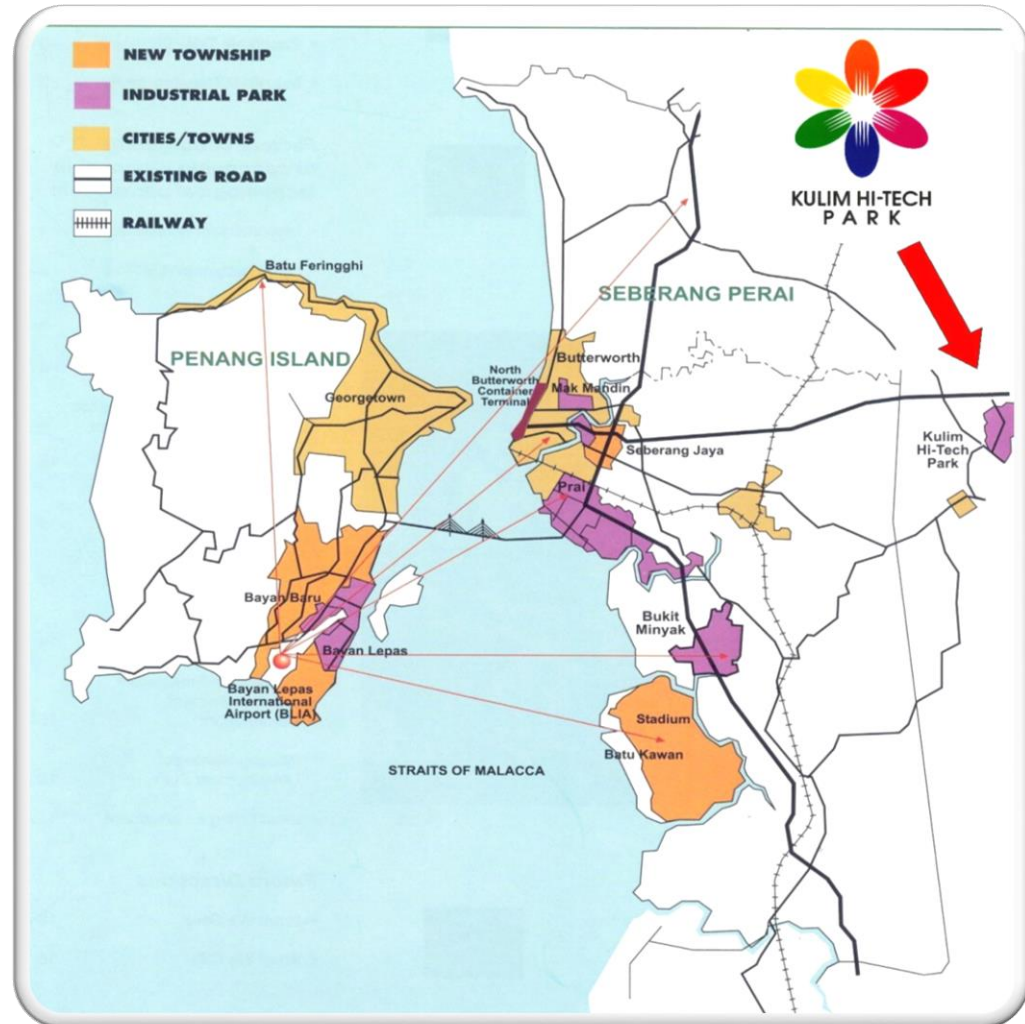
Develop by : Kedah State Development Corporation





## FAST FACTS

- ✓ Centrally located within Malaysia's Northern Region
- ✓ 26 km from North Butterworth Container, Penang Port
- ✓ 45 km from Penang's Bayan Lepas International Airport
- ✓ Directly linked to the North-South Highway and East-West Expressway via Butterworth Kulim Expressway



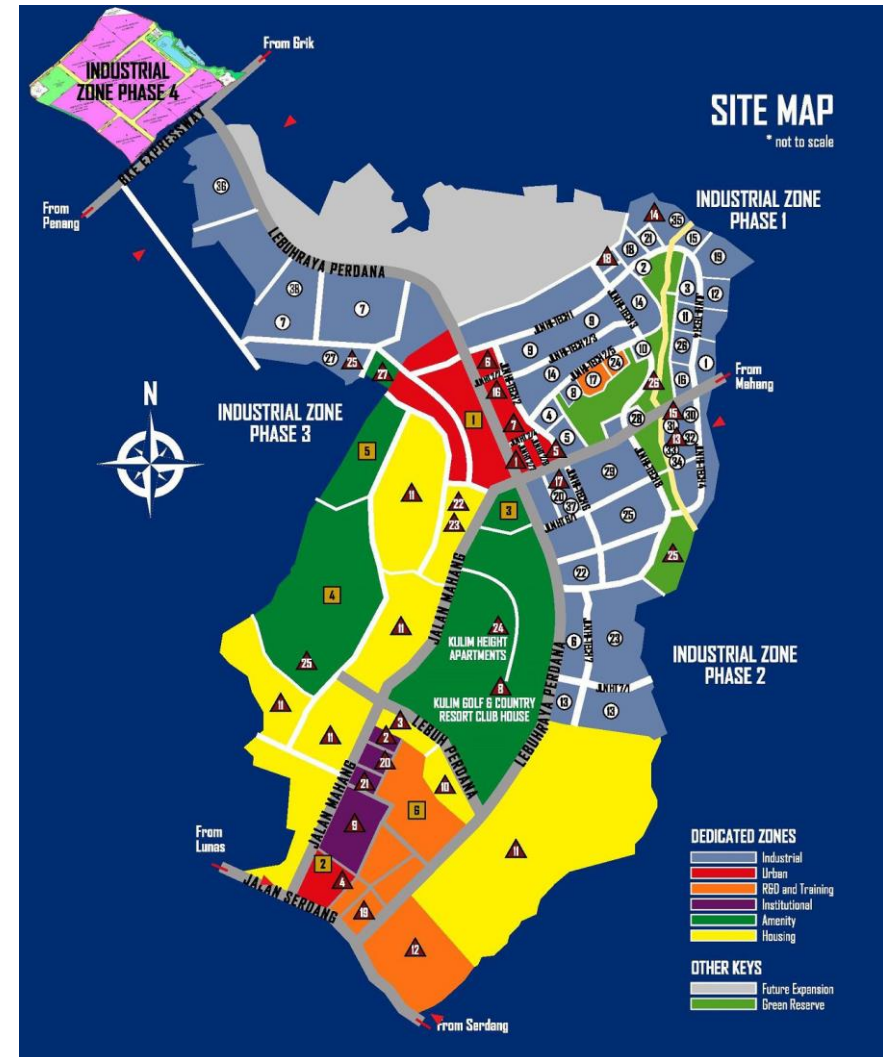
# KULIM HI-TECH PARK



## Targeted Hi-Tech Sectors

- Wafer Fabrication & Related Activities
- Semiconductor & Related Activities
- Green Energy (*Solar Cell/ Fuel Cell/ Polymer Battery/Renewable Energy*)
- Advanced Electronic Industries
- Medical and Scientific Instruments
- Process Control and Automation Equipment
- Optical and Electro-optical Application
- Optoelectronics
- Biotechnology
- Advanced Materials
- Contract R&D Services
- Aerospace
- New and Emerging Technologies

## Master Plan





# KULIM HI-TECH PARK



## MAJOR TENANTS



TOTAL FOREIGN  
DIRECT  
INVESTMENT  
(FDI)

> RM42 BILLION

# AUTOMOTIVE HUBS



## 2 Area – Gurun & Padang Meha, Kulim

### GURUN



**GO AUTO**



PEUGEOT

**HAVAL**

### PADANG MEHA, KULIM



# NEW GROWTH AREAS



## KEDAH KEY GROWTH AREAS

Kedah is fast transforming into a centre for high technology industries in the region. Many international, multi-national and global industrial players and corporations have made Kedah their home E-base that serves the thriving world economy. We have the right mix-talent pool, infrastructure, ecosystem and MORE

### BUKIT KAYU HITAM SPECIAL BORDER ECONOMIC ZONE

**Size Area :** 11,800 acres

**Location :** Bukit Kayu Hitam,  
Kubang Pasu

**Key Industry :** Industry  
(Kota Perdana Industrial  
Park) - Services &  
Automotive Hub  
Government Administration  
Complex  
Commercial / Medical Hub /  
Housing Enclave / Theme  
Park  
Mix Development  
East Business District  
Central Business District  
Industry (Kedah Science &  
Technology Park)

### KEDAH SCIENCE & TECHNOLOGY PARK

**Size Area :** 1,900 acres

**Location :** Bukit Kayu Hitam  
Industrial Area

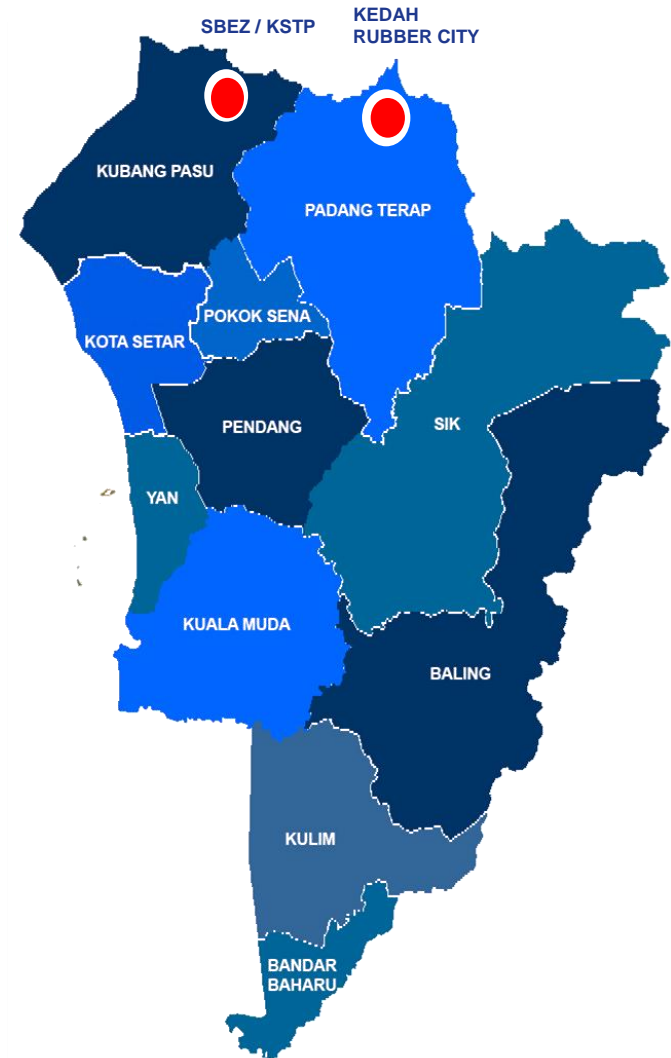
**Key Industry :** Green  
Technology, Component  
R&D and Manufacturing,  
ICT, Advanced Materials,  
Biotechnology, Agro-Science  
& Halal Science

### KEDAH RUBBER CITY

**Size Area :** 1,300 acres

**Location :** Ladang Bukit  
Ketapang, Padang Terap

**Key Industry :** Catalytic  
anchor tenants, Specialized  
latex, rubber products,  
precision engineered rubber  
products & green rubber  
products.





# NEW GROWTH AREAS

## SPECIAL BORDER ECONOMIC ZONE BUKIT KAYU HITAM



- To develop Bukit Kayu Hitam Border Town as Special Border Economic Zone (Free Tax Zone)

- Bukit Kayu Hitam is one of entry point to Malaysia from Thailand.

- PRECINTS**

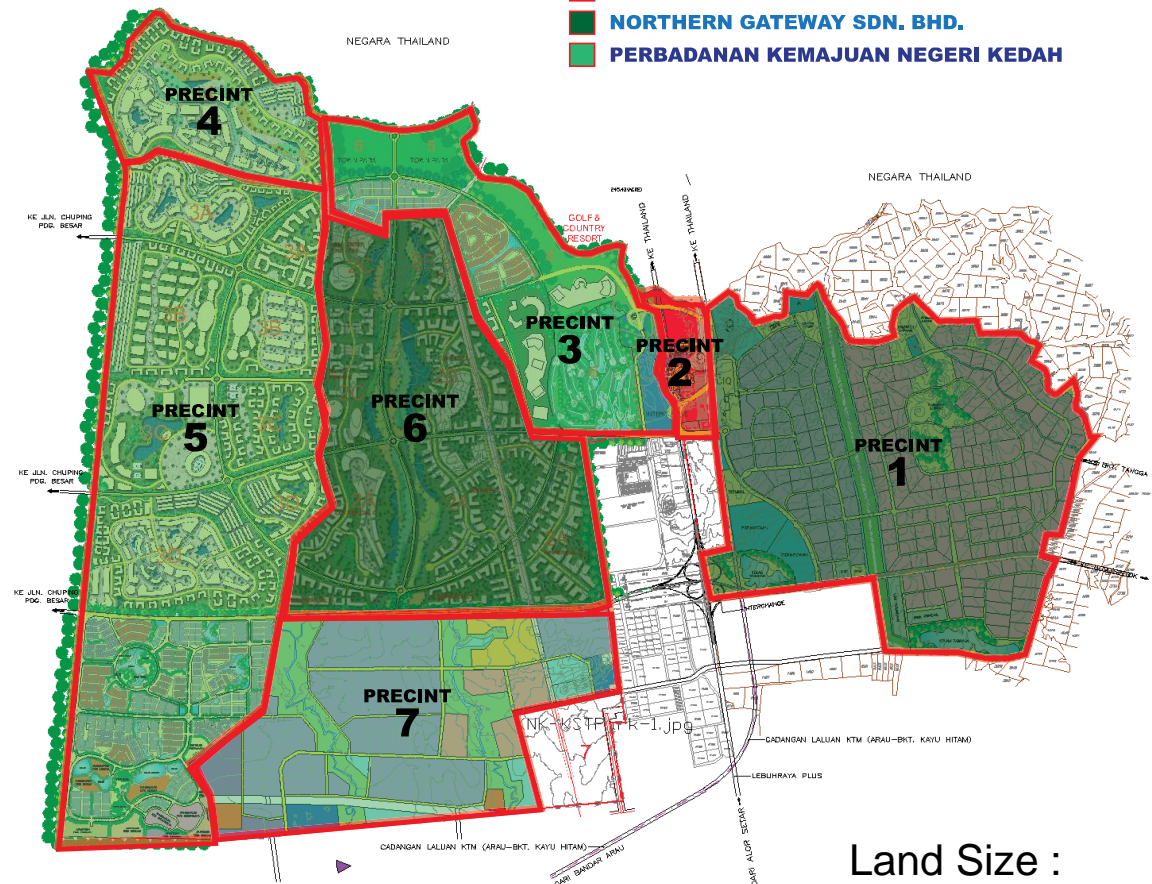
- 1) Industry (Kota Perdana Industrial Park) - Services & Automotive Hub
- 2) Government Administration Complex
- 3) Commercial / Medical Hub / Housing Enclave / Theme Park
- 4) Mix Development
- 5) East Business District
- 6) Central Business District
- 7) Industry (Kedah Science & Technology Park)

### MASTER PLAN

#### BANDAR BEBAS CUKAI

#### PEMILIKAN **TANAH**

- PESURUHJAYA TANAH PERSEKUTUAN**
- NORTHERN GATEWAY SDN. BHD.**
- PERBADANAN KEMAJUAN NEGERI KEDAH**



Land Size :  
**11,800 acres**

# NEW GROWTH AREAS

## PROPOSED LANDBRIDGE BETWEEN SONGKHLA PORT & PENANG PORT



# NEW GROWTH AREAS

## VIDEO OF SPECIAL BORDER ECONOMIC ZONE BUKIT KAYU HITAM





# NEW GROWTH AREAS

## KEDAH SCIENCE & TECHNOLOGY PARK (KSTP)



### - FAST FACTS



Located at Bukit Kayu Hitam Industrial Area (North part of Kedah)



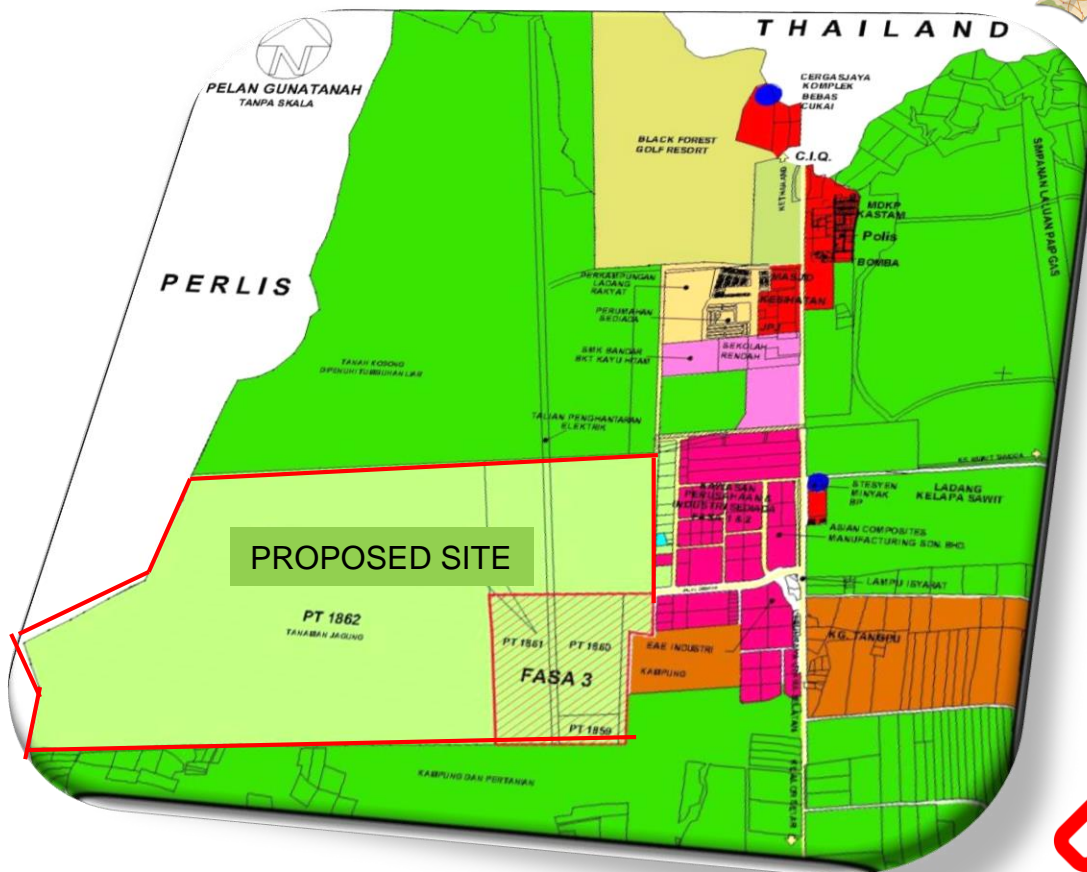
- 2 km bordering Thailand
- 45 km north of Alor Setar



Area - 1,900 acres



New growth centre within IMT-GT

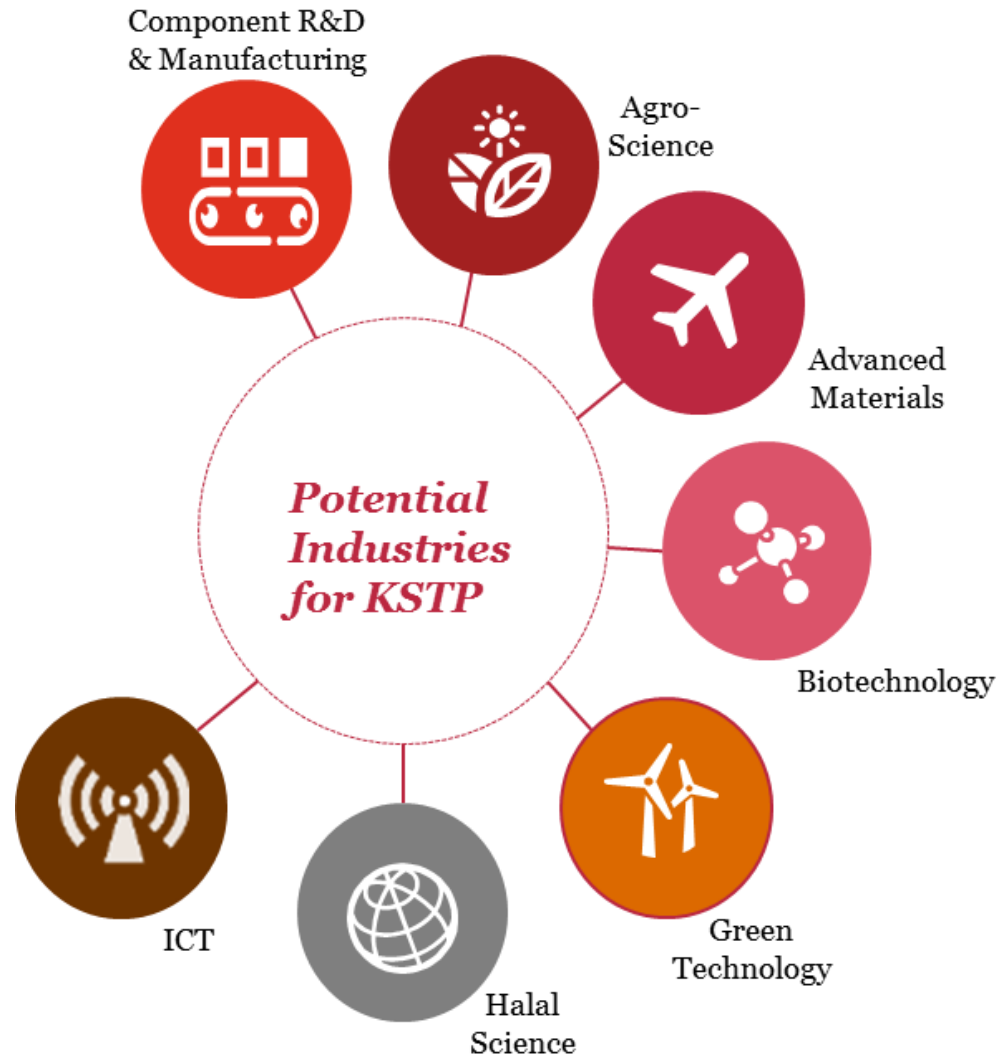


# NEW GROWTH AREAS

## KEDAH SCIENCE & TECHNOLOGY PARK (KSTP)



### TARGETTED INDUSTRIES



# Masterplan

- 
- Ke Sintok**
- Ke Padang Sanai**
- Ke Padang Terap**
- Stesen Penyelidikan Lembaga Gritah Malaysia**
- | KOMPONEN PEMBANGUNAN INDUSTRI                   | LOT | EKAR   | PERATUS |
|---|-----|--------|---------|
| KLUSTER 1- ADVANCED LATEX PRODUCTS              | 47  | 278.99 | 22.25   |
| KLUSTER 2- TYRE AND TYRE RELATED PRODUCTS       | 4   | 167.55 | 13.36   |
| KLUSTER 3- RUBBER AUTOMOTIVE COMPONENTS         | 5   | 41.76  | 3.33    |
| KLUSTER 4- ENGINEERING RUBBER PRODUCTS          | 10  | 90.27  | 7.20    |
| KLUSTER 5- ADVANCED RUBBER AND RUBBER MATERIALS | 6   | 32.19  | 2.56    |
| KLUSTER 6- BIOTECHNOLOGY AND PHARMACEUTICAL     | 4   | 30.17  | 2.40    |
| KLUSTER 7- SERVICE AND SUPPORT                  | 3   | 34.07  | 2.71    |
| JUMLAH KEOL                                     | 79  | 675.00 | 53.81   |
- | KOMPONEN PEMBANGUNAN LAR-LAR      | LOT | EKAR    | PERATUS |
|-----------------------------------|-----|---------|---------|
| PLAT KONGRES                      | 5   | 36.34   | 2.88    |
| PLAT KONGRES RUMAH                | 2   | 1.92    | 0.15    |
| PLAT KONGRES RUMAH                | -   | 18.34   | 1.46    |
| PLAT KONGRES RUMAH                | -   | 111.38  | 8.96    |
| PENGKALIAN                        | 2   | 10.17   | 0.82    |
| PERKOTAAN - PENGKALIAN RUMAH (PM) | 1   | 10.60   | 0.84    |
| PERKOTAAN - PENGKALIAN RUMAH (PM) | 3   | 1.56    | 0.12    |
| PERKOTAAN - PENGKALIAN RUMAH (PM) | 8   | 0.49    | 0.03    |
| PERKOTAAN - PENGKALIAN RUMAH (PM) | 1   | 1.86    | 0.14    |
| PERKOTAAN - PENGKALIAN RUMAH (PM) | 1   | 40.50   | 3.27    |
| PERKOTAAN - PENGKALIAN RUMAH (PM) | 2   | 2.34    | 0.18    |
| PERKOTAAN - PENGKALIAN RUMAH (PM) | 1   | 1.21    | 0.09    |
| PERKOTAAN - PENGKALIAN RUMAH (PM) | 1   | 0.02    | 0.001   |
| PERKOTAAN - PENGKALIAN RUMAH (PM) | 1   | 0.53    | 0.04    |
| PERKOTAAN - PENGKALIAN RUMAH (PM) | 1   | 0.61    | 0.04    |
| PERKOTAAN - PENGKALIAN RUMAH (PM) | -   | 32.73   | 2.71    |
| PERKOTAAN - PENGKALIAN RUMAH (PM) | -   | 60.46   | 4.82    |
| PERKOTAAN - PENGKALIAN RUMAH (PM) | -   | 41.22   | 3.28    |
| PERKOTAAN - PENGKALIAN RUMAH (PM) | -   | 108.72  | 8.71    |
| PERKOTAAN - PENGKALIAN RUMAH (PM) | -   | 11.08   | 0.88    |
| JUMLAH KEOL                       | -   | 1205.52 | 100     |



# NEW GROWTH AREAS

## CORE INDUSTRIES



The Rubber City will focus on four core rubber sub-industries producing high value add downstream products from both natural and synthetic rubber ...

### Core Industries

#### Catalytic Anchor Tenants

- **Large, well-recognized leading** rubber product manufacturers, e.g. latex / nitrile gloves, passenger and commercial tyres, condoms



#### Specialized Latex and Rubber Products

- **Innovative, high value-add and specialized** products for **niche customer** segments, e.g. specialty / surgical gloves, catheters, latex mattresses, adhesives, “intelligent” rubber



#### Precision Engineered Rubber Products

- **Precision moulded rubber products** for different industrial sectors, e.g. seals, gaskets, bearings for automotive, medical devices, aerospace, construction sectors

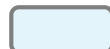


#### “Green” Rubber Products

- Rubber-based products which are produced using **environmentally-friendly raw materials and / or processes**, e.g. Ekoprena tyres<sup>1</sup>, reclaimed rubber products such as rubberised bitumen; or which contribute to lower carbon footprint



Legend



Catalytic Sub-category

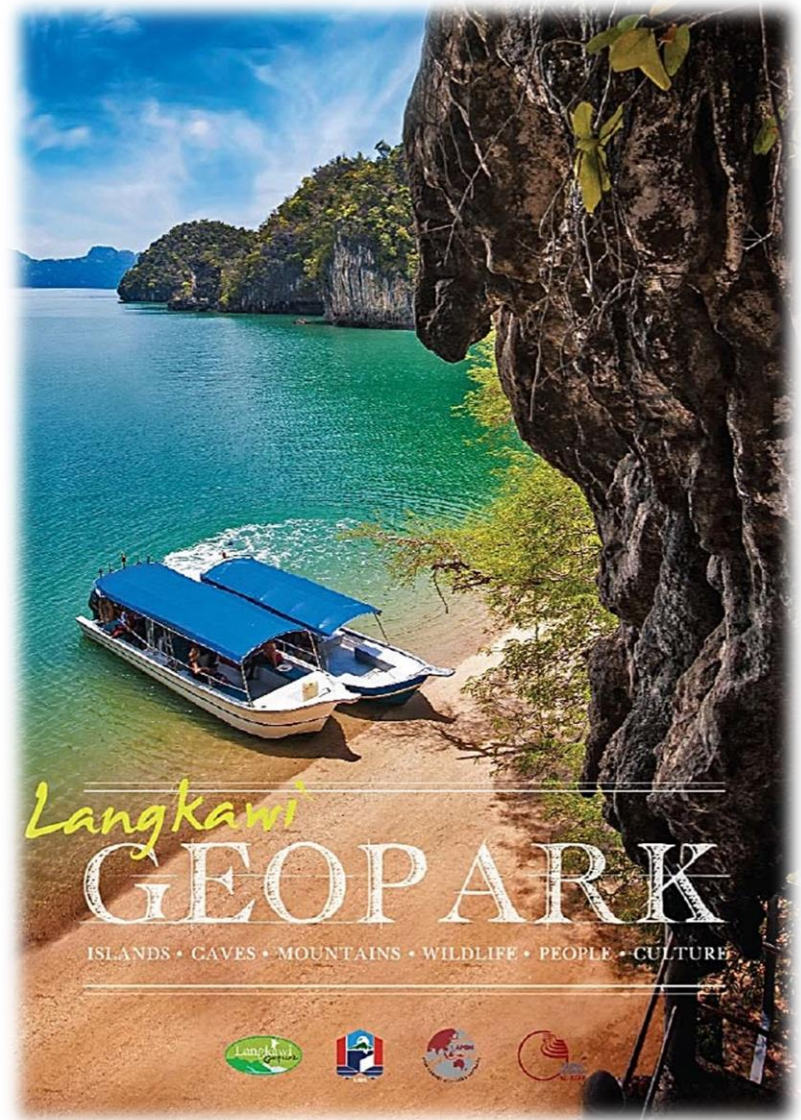


High Value Add Sub-category

# TOURISM – LANGKAWI ISLAND



- Popular tourist destinations
- Located 30 km off the mainland
- Close to Thailand, (Koh Lipe island)
- Direct flight from Singapore & China
- Consists of almost 104 small surrounding islands.
- **World Geopark** status by UNESCO
- **Duty-Free Island**
- Characterized by beautiful hills, valleys, mountains, jungles, beautiful unspoiled beaches, waterfalls, rice fields and quaint villages





# TOURISTS ARRIVAL (2011-2016)



Year	Mainland			Langkawi Island			Total		
	Domestic	International	Total	Domestic	International	Total	Domestic	International	Total
2011	664,923	116,260	781,183	947,950	1,054,120	2,002,070	1,612,873	1,170,380	2,783,253
2012	656,551	98,127	754,678	983,790	1,114,301	2,098,091	1,640,341	1,212,428	2,852,769
2013	809,641	28,388	838,029	940,970	1,021,498	1,962,468	1,750,611	1,049,886	2,800,497
2015	1,058,347	52,116	1,110,463	1,019,418	1,169,246	2,188,664	2,077,765	1,221,362	3,299,127
2016	1,031,461	52,483	1,083,944	1,442,943	1,228,988	2,671,931	2,474,404	1,281,471	3,755,875



Source : Tourism Malaysia

# Langkawi's Tourism Map

## Map of Langkawi



## Legend

Naturally  
**LANGKAWI**

[www.naturallylangkawi.my](http://www.naturallylangkawi.my)

- |                           |                            |                                   |                      |                             |                           |
|---------------------------|----------------------------|-----------------------------------|----------------------|-----------------------------|---------------------------|
| 1 Langkawi Sky Cab        | 6 Telaga Harbour           | 11 Tasik Dayang Bunting           | 16 MARDI Agro Park   | 21 Buffalo Park             | 26 Gua Cherita            |
| 2 Langkawi Sky Bridge     | 7 Rebak Marina             | 12 Gua Langsir                    | 17 99 East Golf Club | 22 Crocodile Adventureland  | 27 Gua Kelawar            |
| 3 The Golf Club Datal Bay | 8 Laman Padi               | 13 The Royal Langkawi Yacht Club  | 18 Kota Mahsuri      | 23 Craft Complex            | 28 Galeria Perdana        |
| 4 Temurun Waterfall       | 9 Underwater World         | 14 Taman Legenda & Dataran Helang | 19 Canopy Adventure  | 24 Lubuk Semilang Waterfall | 29 Langkawi Wildlife Park |
| 5 Telaga Tujuh Waterfall  | 10 Awana Porto Malai Jetty | 15 Gunung Raya Golf Club          | 20 Beras Terbakar    | 25 Air Hangat Village       | 30 Fish Farm              |



FOLLOW AND LIKE us at :

[f Naturallylangkawi](https://www.facebook.com/Naturallylangkawi)
[@nat\\_langkawi](https://www.instagram.com/nat_langkawi)  
[tripadvisor.com.my/langkawi](https://www.tripadvisor.com.my/langkawi)



# Popular Events in Langkawi



14th Royal Langkawi International Regatta



13th KFC Langkawi International Regatta Perdana & ASAF Sailing Cup



Professional Golf Of Malaysia (PGM) LADA Langkawi Championship (ADT)



Tuba Trail Run



Langkawi International Water Festival



Langkawi International Laksa Carnival (LILAC)



Langkawi Ultra Marathon



Raja Muda Selangor International Regatta



Ironman Langkawi Malaysia



Langkawi International Maritime and Aerospace Exhibition (LIMA)

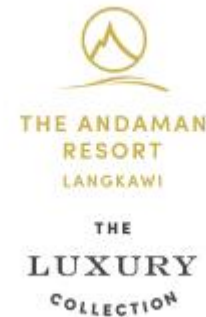


XTERRA Asia Pacific Tour Championship



Le Tour De Langkawi

# LUXURY HOTELS IN LANGKAWI



# Table of Contents



About Kedah



Business Environment



Investment Promotion



Talented Human Resources



Kedah Investment Holistic



Upcoming & Potential



Success Story of KHTP



Q & A Session



# UPCOMING & POTENTIAL PROJECTS



# Table of Contents



About Kedah



Upcoming & Potential



Business Environment



Success Story of KHTP



Investment Promotion



Q & A Session



Talented Human Resources



Kedah Investment Holistic

# Table of Contents



About Kedah



Upcoming & Potential



Business Environment



Success Story of KHTP



Investment Promotion



Q & A Session



Talented Human Resources



Kedah Investment Holistic



Session



Want a **BIG PIECE** of

**Asia's Action?**

**KEDAH IS SPOT-ON!**



Block C, Level 3, Wisma Darul Aman  
05503 Alor Setar, Kedah, Malaysia



+604 732 5326

+604 732 5357



+604 732 5484



[info@investkedah.com.my](mailto:info@investkedah.com.my)



[www.investkedah.com.my](http://www.investkedah.com.my)

